

SPARKS

★ AUCTIONS

The Bytown Collection of exceptional quality mint Canada and Newfoundland

*The Red Baron Collection of exceptional quality mint never hinged
Canadian Semi-Official Airmail stamps plus postal history*



Lot 255

February 26th, 2022 Sales #40 and #41
www.sparks-auctions.com

SPARKS AUCTIONS SALES 40 and 41

	Page
<i>Editorial</i>	2
<i>Symbols & Abbreviations</i>	2
<i>Viewing</i>	2
<i>Shipping Information</i>	85
<i>Terms & Conditions</i>	85
<i>About Bidding on the Internet</i>	86
<i>Agents</i>	86
<i>Catalogue valuations</i>	86
<i>Bidsheet</i>	87-88

**See our auction online at
StampAuctionNetwork.com,
where you will find scans and photos
of all lots and live internet bidding.**

**Our website has the entire printed catalogue
in PDF format, up-to-date corrections, etc.
Check back daily for featured lots.**

**1770 Woodward Drive, Suite 101
Ottawa, Ontario, CANADA K2C 0P8
Office Hours: By Appointment Only**

**Tel: 613-567-3336
Fax: 613-567-2972
844-252-2032 toll-free in North America
Email: info@sparks-auctions.com
www.sparks-auctions.com**

Copyright © 2022 - All Rights Reserved

**The Bytown Collection
Index on Page 3
Saturday, February 26th
10:00a.m.**

The Bytown Collection

**The Red Baron Collection
Index on Page 59
Saturday, February 26th
approx. 2:00p.m.**

The Red Baron Collection

ROYAL AIR FORCE

Welcome to Sparks Auction's sales 40 and 41. These two personalized name sales include:

The Bytown collection of exceptional quality mint Canada and Newfoundland. This collection was carefully assembled with attention given to obtaining the best possible examples of each stamp. The majority of the collection is mint never hinged, with mostly very fine to extremely fine centering and quality. It is quite comprehensive from the Queen Victoria through King George VI eras, with many shades and printings, plus interesting material before and after, including select back of the book issues and BNA, featuring Newfoundland.

The Red Baron Collection of exceptional quality mint never hinged Canadian Semi-Official Airmail stamps plus postal history. All of the stamps in this extensive and impressive collection are mint never hinged and of very high quality, except for a rare complete pane of 5 of CL7 the Moose Jaw Flying Club issue (very lightly hinged, not known to exist as never hinged). The postal history is equally impressive, with many varieties and an excellent range of material.

The quality material in both of these sales is sure to impress. As an important note, both of these sales are being offered completely unreserved, which means that all the lots will start at \$10 and sell for whatever the market determines. Our relatively low Canadian dollar and competitive 17% buyer fee add to the excitement of these sales, and we hope everyone will find those elusive items they've been seeking.

Enjoy these sales!



Stéphane Cloutier, FRPSC, FPHSC
Auction Manager

Viewing will be booked by appointment only to ensure appropriate social distancing measures are taken to keep staff and bidders safe.

Please contact the office or see our website for more information.

Phone: 613-567-3336 Email: info@sparks-auctions.com

Symbols and Abbreviations

**** never hinged** with original gum (NH also used)

*** hinged** with original gum

(*) unused without gum either as issued, or having gum fully removed. This is normally further qualified in the description.

og original gum

⊙ used includes full range of postally used, cancelled-to-order, precancelled.

XF extremely fine applies to stamps with exceptional quality and margins well in excess of what would typically be found. This term is used rarely and is not used by us on items usually only found this way.

VF very fine a stamp in superior condition which is well-centered and without fault.

F-VF fine-very fine applied to stamps that are somewhat less well-centered than very fine, while taking into account what may be considered as typical margins of classic material. The term has also been applied to multiples with individual stamps with range of grade or for larger lots/collections.

F fine stamps having perforations that do not cut into the design and without damaging faults. Items described as such may have slight detracting features such as short perforation tips or natural inclusion. Many better classic material naturally falls into this category and may be expected to command prices similar to those ascribed by catalogue values.

VG very good equivalent to "average". Typically with poor centering, heavy cancellation or faults such as minor thins, light creases, etc.

✉ cover which here embraces stampless folded letters (SFL), envelopes, first day covers (FDC's), stationery envelopes, etc.

E/P essay, proof, die proof

F forgery

UL upper left usually used to describe the corner of a sheet, block or individual stamp. The abbreviations UR, LR and LL are used similarly.

c.d.s. circular date stamp postmark

MNH mint never hinged

l.h. lightly hinged

v.l.h. very lightly hinged

h.r. hinge remnant

perf. perforation used in the context of "short perfs" or a perforation measurement, such as "perf. 12.0 x 11.5"

Est. estimate when there is no price guide for the item, this is our estimate of the final hammer price if there is average competition for the lot.

-, / used when describing a range of catalogue numbers, where "-" indicates the range is complete between two numbers, and "/" indicates missing one or more items.

c.v. catalogue value



THE BYTOWN COLLECTION

**SATURDAY, FEBRUARY 26th, 2022
10:00a.m.**

Lots #1-368

Lots

1851-1859 Pence Issues	1-2
1868-1876 Large Queens	3-14
1870-1893 Small Queens	15-28
1897-1902 Victoria Issues	29-81
1903-1908 Edward and Québec	82-105
1912-1925 Admirals including War Tax	106-195
1927-1952 King George V- QEII	196-238
Back of the Book	239-270
British Columbia and Vancouver Island	271-274
New Brunswick	275-279
Nova Scotia	280-283
Prince Edward Island	284
Newfoundland	285-368

*** There will be a 30-minute lunch break at
approximately 12:00 noon.**

**Province of Canada
Pence Issues Scott #1-13**



- 1** **** #8 1857 ½d Rose Queen Victoria Imperforate**, mint with full original gum, never hinged. A very fresh stamp with bright colour and three large margins, just clear at bottom, fine-very fine. Catalogue value does not include a never hinged premium.
..... **Unitrade \$2,100**



- 2** **(*) #11 1858 ½d Rose Queen Victoria, Perforated 11¾**, unused (no gum) with full intact perforations and three large margins, just touching design at top, fine-very fine.
..... **Unitrade \$4,000**

**Queen Victoria Era
Large Queens Scott #21-33**

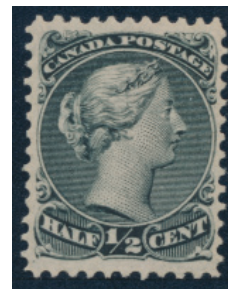


- 3** **** #21, 21ii, 21iv 1868 ½c Black Large Queen with Varieties**, a mint horizontal strip of four with full original gum, never hinged. The left 3 stamps have the "spur in scroll" variety and the leftmost stamp has a faint "line over P" variety. Fresh and fine, accompanied by a 2015 Greene Foundation certificate.
..... **Unitrade \$1,080**



4

- 4** *** #21a 1868 ½c Black Large Queen, Perforated 11½x12**, mint with full original gum, redistributed to appear never hinged, very fine.
..... **Unitrade \$180**



5

- 5** **** #21vi 1868 ½c Grey Black Large Queen**, mint with full original gum, never hinged with a tiny bit of offset on gum, still a very fine and big stamp.
..... **Unitrade \$375**



- 6** *** #23 1869 1c Yellow Orange Large Queen**, mint with full original gum, lightly hinged. A fresh stamp with bright colour and nice centering, the upper left corner perf tip is creased, else a very fine stamp.
..... **Unitrade \$4,000**



- 7** *** #24b 1868 2c Deep Green Large Queen on Thin Paper**, mint with full original gum, very lightly hinged and very fine.
..... **Unitrade \$2,800**



- 8 *** #25 1868 3c Red Large Queen**, mint with full original gum, appears never hinged but has a tiny bit gum disturbance at bottom, so counted as hinged. A very fine and fresh stamp, missing in many collections.
 **Unitrade \$6,000**



- 9 **(*) #25iii 1868 3c Orange Red Large Queen on Thick Soft Blotting Paper**, unused (no gum), with bright colour and crisp impression, a very scarce unused example of this paper variety, and quite elusive in this lovely condition, fine. Accompanied by a 2017 Greene Foundation certificate.
 **Unitrade \$2,750**



- 10 *** #27f 1868 6c Black Brown Large Queen on Thin Paper**, mint with large part original gum, hinged and redistributed, very well centered and fresh, shorter perf at bottom, very fine. A rare mint Large Queen.
 **Unitrade \$8,000**



11

- 11 **(*) #28 1868 12 1/2c Blue Large Queen**, unused (no gum), fresh and well centered, very fine.
 **Unitrade \$1,400**



12

- 12 **** #29i 1868 15c Slate Purple Large Queen**, mint with full original gum, never hinged and well centered, fresh and very fine. Ex Dennis Dunn and accompanied by a 1991 Greene Foundation certificate identifying it as a #29.
 **Unitrade \$500**



- 13 *** #29ii 1868 15c Grey Violet Large Queen with Pawnbroker Variety**, mint with large part original gum, showing the popular variety which occurs in position 10, fine. Accompanied by a 2015 Greene Foundation certificate.
 **Unitrade \$1,200**



- 14 **** #30b 1875 15c Blue Grey Large Queen**, mint with full original gum, never hinged, with fresh colour and well centered, extremely fine. Quite a handsome stamp.
 **Unitrade \$600**

Small Queens Scott #34-47



15



16

- 15 **** #34 1882 1/2c Black Small Queen on Yellowish Paper**, mint with full original gum, never hinged and fresh, well centered and extremely fine.

.....Unitrade \$75

- 16 **** #34 1882 1/2c Black Small Queen on Greyish Paper**, mint with full original gum, never hinged and fresh, well centered and extremely fine.

.....Unitrade \$75



17



18

- 17 **** #34ii 1882 1/2c Black Small Queen on Thicker White Paper**, mint with full original gum, never hinged and fresh, well centered and extremely fine.

.....Unitrade \$175

- 18 **** #35 1890s 1c Yellow Small Queen**, mint with full original gum, never hinged and well centered among balanced margins. A fresh stamp with only the slightest bend at lower left corner, still a very fine appearing stamp. Accompanied by a 2010 Richard Gratton AIEP certificate (not mentioning the slight bend).

.....Unitrade \$180



19



20

- 19 **** #36i 1890s 2c Green Small Queen**, mint with full original gum, never hinged. A very fresh stamp with deep rich colour, very fine plus.

.....Unitrade \$300

- 20 **** #37 1880s 3c Orange Red Small Queen**, mint with full original gum, never hinged and fresh, well centered among large margins, extremely fine.

.....Unitrade \$750



21



22

- 21 *** #38i 1876 5c Deep Olive Green Small Queen**, mint with full original gum, hinged and well centered, a fresh and extremely fine stamp.

.....Unitrade \$1,200

- 22 **** #42 1890s 5c Grey Small Queen**, mint with full original gum, never hinged and very fine.

.....Unitrade \$900



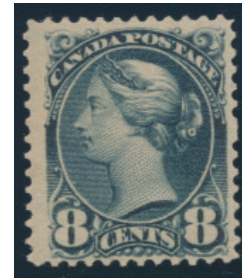
23

- * #43i 1890 6c Chestnut Small Queen**, a mint right marginal single with full original gum, lightly hinged and showing part of the plate imprint plus a vertical cutting line at right. A fresh stamp with deep colour, well centered and extremely fine. Accompanied by a 2019 Greene Foundation certificate.

.....Unitrade \$350



24



25

- 24 **** #44 1897 8c Violet Black Small Queen**, mint with full original gum, never hinged and fresh, shorter perf at top, very fine.

.....Unitrade \$1,050

- 25 **** #44b 1893 8c Slate Small Queen**, mint with full original gum, never hinged. A fresh and fine-very fine stamp. Accompanied by a 2013 Richard Gratton AIEP certificate.

.....Unitrade \$925





- 26 * **#45a 1891 10c Rose Carmine Small Queen**, mint with full original gum, lightly hinged, with sheet selvage at left showing a plate imprint the whole height of the stamp. A fresh and very fine stamp.
.....Unitrade \$800



- 27 ** **#46 1893 20c Vermillion Widow Weeds**, mint with full original gum, never hinged. An exceptional stamp, with its large margins, bright colour and freshness, extremely fine and destined for the finest collection. Accompanied by a photocopy of a 2014 Greene Foundation certificate for a block of four, from which this was the top right stamp.
.....Unitrade \$2,400



- 28 ** **#47 1893 50c Deep Blue Widow Weeds**, mint with full original gum, never hinged and very fine. Accompanied by a 2014 Greene Foundation certificate.
.....Unitrade \$2,400

Jubilee Issue Scott #50-65



- 29 ** **#50 1897 1/2c Black Jubilee**, mint never hinged, fresh and very fine.
.....Unitrade \$420



- 30 ** **#50-53 1897 1/2c to 3c Jubilee Selection**, all mint never hinged and well centered, a fresh group, very fine.
.....Unitrade \$810



- 31 ** **#53 1897 3c Bright Rose Jubilee**, mint never hinged with left sheet margin, a lovely stamp with balanced margins and fresh bright colour, extremely fine.
.....Unitrade \$120



- 32 ** **#54 1897 5c Deep Blue Jubilee**, mint never hinged with bright colour, fresh and very fine.
.....Unitrade \$300



- 33 **** #55 1897 6c Yellow Brown Jubilee**, mint never hinged, with fresh colour and very nicely centered, two perf tips have a bend at top (mentioned for strict accuracy), otherwise an extremely fine stamp.
Unitrade \$900



- 34 **** #56 1897 8c Dark Violet Jubilee**, mint never hinged, with sheet margin at top showing "OTTAWA" of the imprint, very fine. Accompanied by a 2003 Richard Gratton AIEP certificate.
Unitrade \$600



- 35 **** #56 1897 8c Dark Violet Jubilee**, mint never hinged with lower sheet margin, a lovely stamp with balanced margins and fresh colour, extremely fine.
Unitrade \$600



- 36 **** #57 1897 10c Brown Violet Jubilee**, mint never hinged, fresh and well centered, very fine.
Unitrade \$750



- 37 **** #59 1897 20c Vermillion Jubilee**, mint never hinged with sheet margin at left, bright colour and fresh, very fine.
Unitrade \$1,200



- 38 *** #59ii 1897 20c Vermillion Jubilee with "W-E" Variety**, mint hinged, well centered with the variety occurring in position 15 of plate 21, very fine.
Unitrade \$900



- 39 **** #60 1897 50c Ultramarine Jubilee**, mint never hinged, tiny gum wrinkle at top, fresh and well centered, very fine.
Unitrade \$1,500



- 40 ** #60i 1897 50c Deep Ultramarine Jubilee, mint never hinged, with a very light corner bend, still fresh and fine-very fine. A rarely offered shade.
 Unitrade \$1,075



- 43 ** #63 1897 \$3 Yellow Bistre Jubilee, mint never hinged and fresh, with fingerprints on gum and natural gum bends, still fine-very fine.
 Unitrade \$2,200



- 41 ** #61 1897 \$1 Lake Jubilee, mint never hinged, with bright colour and well centered, very fine. A lovely stamp.
 Unitrade \$3,000



- 44 ** #64 1897 \$4 Purple Jubilee, mint never hinged and fine. Accompanied by a 2014 Greene Foundation certificate.
 Unitrade \$2,400



- 42 ** #62 1897 \$2 Dark Purple Jubilee, mint never hinged, with deep rich colour and fine.
 Unitrade \$2,000



- 45 ** #65 1897 \$5 Olive Green Jubilee, mint never hinged and well centered, very fine.
 Unitrade \$6,000

Leaf Issues Scott #66-73



- 46 **** #66 1897 ½c Black Queen Victoria Leaf**, mint never hinged with large balanced margins and rich colour, extremely fine. A lovely stamp in all respects.
Unitrade \$60



- 47 **** #66, 66i 1897 ½c Black Queen Victoria Leaf**, a mint never hinged complete left pane of 100, with full selvage on three sides and plate 1 inscription at top. Plate positions 1 and 69 show the major re-entry. A fresh pane, not often seen this nice. Catalogued as 98 fine-very fine regular stamps plus 2 very fine major re-entries.
Unitrade \$4,460



- 48 **** #67 1897 1c Blue Green Queen Victoria Leaf**, mint never hinged with lovely centering and colour, extremely fine and fresh.
Unitrade \$240



49

- 49 **** #68 1897 2c Purple Queen Victoria Leaf**, mint never hinged and well centered, with fresh and bright colour, very fine.
Unitrade \$240



50

- 50 **** #69 1898 3c Carmine Queen Victoria Leaf**, mint never hinged with sheet margin at top reading OTTAW of the imprint, with bright colour and nice centering, fresh and very fine plus.
Unitrade \$360



51

- 51 **** #70 1897 5c Dark Blue Queen Victoria Leaf**, mint never hinged, well centered and fresh, very fine. Accompanied by a 1993 Philatelic Foundation certificate.
Unitrade \$750



52

- 52 **** #70 1897 5c Dark Blue Queen Victoria Leaf**, mint never hinged with bright colour and great centering, a fresh and very fine stamp.
Unitrade \$750



- 53 **** #71 1897 6c Brown Queen Victoria Leaf**, mint never hinged, well centered among four large margins, quite fresh and extremely fine. A lovely stamp.
Unitrade \$600



- 54 **** #72 1897 8c Orange Queen Victoria Leaf**, mint never hinged, with full original gum, never hinged. A well centered and fresh stamp, very fine plus.
 **Unitrade \$1,350**

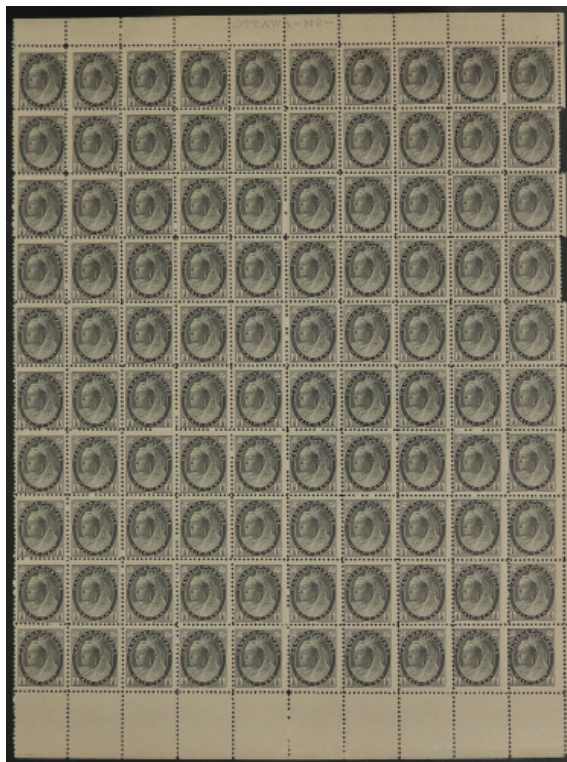


- 55 **** #72 1897 8c Orange Queen Victoria Leaf**, a mint never hinged block of six with full original gum, never hinged, overall very fine.
 **Unitrade \$8,100**



- 56 **** #73 1897 10c Brown Violet Queen Victoria Leaf**, mint never hinged, very well centered and fresh, with a trivial gum bend at lower left, else extremely fine.
 **Unitrade \$2,400**

Numeral Issues Scott #74-84



- 57 **** #74 1898 1/2c Black Queen Victoria Numeral**, a mint never hinged sheet of 100, with full selvage at bottom and top, showing the complete plate 1 inscription at top. There is a bit of separation in places, still a fine-very fine sheet.
 **Unitrade \$3,500**



- 58 **** #74 1898 1/2c Black Queen Victoria Numeral**, a mint never hinged block of 4 with every stamp well centered, fresh and extremely fine.
 **Unitrade \$240**

Proud partner sponsor of





59

- 59 **** #74 1898 1/2c Black Queen Victoria Numeral**, mint never hinged and fresh, with huge and well balanced margins, extremely fine.

.....Unitrade \$60



60

- 60 **** #75 1898 1c Grey Green Queen Victoria Numeral**, mint never hinged, very nicely centered and fresh, extremely fine.

.....Unitrade \$240



61

- 61 **** #76 1898 2c Deep Purple Queen Victoria Numeral**, mint never hinged, very nicely centered and fresh, extremely fine.

.....Unitrade \$240



62

- 62 **** #76a 1898 2c Purple Queen Victoria Numeral on Somewhat Yellowish Thick Paper**, mint never hinged, very nicely centered and fresh, very fine plus.

.....Unitrade \$750



- 63 **** #77 1899 2c Carmine Queen Victoria Numeral, Die I**, a mint never hinged upper right corner single, fresh and very fine.

.....Unitrade \$270



64

- 64 **** #77 1899 2c Carmine Queen Victoria Numeral, Die I**, mint never hinged, quite fresh and well centered, extremely fine.

.....Unitrade \$270



65

- 65 **** #78 1898 3c Carmine Queen Victoria Numeral**, mint never hinged, fairly well centered with bright colour, very fine.

.....Unitrade \$450



66

- 66 *** #78i 1898 3c Carmine Queen Victoria Numeral with Major Re-Entry**, mint with lightly redistributed gum to appear NH, the major re-entry is most prominent in the lower numerals. A well centered and scarce stamp, with a hint of sulphuretting, very fine. The first mint example we have offered, listed but unpriced in Unitrade.

.....Est \$200



67

- 67 **** #79 1899 5c Deep Blue Queen Victoria Numeral on Bluish Paper**, mint never hinged with sheet margin at top, a very well centered stamp with deep, rich colour, remarkably fresh and extremely fine. One of the many gems of this collection.

.....Unitrade \$1,050





68

- 68 **** #79 1899 5c Blue Queen Victoria Numeral on Bluish Paper**, mint never hinged, very nicely centered and an extremely fine stamp.

..... Unitrade \$1,050



69

- 69 **** #79b 1899 5c Blue Queen Victoria Numeral on Whiter Paper**, mint never hinged and well centered among large margins, quite fresh and very fine plus.

..... Unitrade \$1,050



70

- 70 **** #79b 1899 5c Blue Queen Victoria Numeral on Whiter Paper**, mint never hinged, with sheet margin at top showing part of the (reversed) plate 2 inscription, well centered with fresh, bright colour and a very light fingerprint on gum, still very fine.

..... Unitrade \$1,050



71

- 71 **** #80 1898 6c Brown Queen Victoria Numeral**, mint never hinged with sheet margin at top showing "A - No - " of the plate imprint, deep rich colour, fresh and fine-very fine.

..... Unitrade \$550



- 72 **** #80 1898 6c Brown Queen Victoria Numeral**, mint never hinged and well centered, a few perf tips at bottom missing gum (mentioned for the record only), still very fine.

..... Unitrade \$900



73

- ** #80 1898 6c Brown Queen Victoria Numeral**, a mint never hinged upper right corner block of 4, with deep rich colour, fine-very fine. A fresh multiple.

..... Unitrade \$2,200



74

- ** #80 1898 6c Brown Queen Victoria Numeral**, a mint never hinged upper marginal block of 4, with deep rich colour, very fine. A fresh and scarce multiple, especially this nice.

..... Unitrade \$3,600

SPARKS
★ AUCTIONS

We are always seeking nice material for our sales. Contact Stéphane to discuss your consignments to our future auctions.

stephane@sparks-auctions.com



- 75 * #81 1902 7c Olive Yellow Queen Victoria Numeral, mint never hinged with large margins and quite fresh, very fine plus.
.....Unitrade \$900



- 76 ** #82 1898 8c Orange Queen Victoria Numeral, mint never hinged and well centered within balanced margins, very fine plus.
.....Unitrade \$1,800



- 77 ** #83 1898 10c Brown Violet Queen Victoria Numeral, mint never hinged, very well centered and fresh, extremely fine. Accompanied by a 2012 Greene Foundation certificate. A very nice stamp.
.....Unitrade \$2,250



- 78 ** #84 1900 20c Olive Green Queen Victoria Numeral, mint never hinged, with four large even margins, deep rich colour and extremely fine. A lovely stamp.
.....Unitrade \$3,000

Imperial Penny Postage and Provisionals Scott #85-88



- 79 ** #85-86b 1898 2c Map Stamp Selection of Four Shades, the four listed shades, with lavender, grey, blue and deep blue oceans, each is mint never hinged fresh and extremely fine. A lovely set. Of note is the brilliant colour of the deep blue ocean stamp, not often seen like this.
.....Unitrade \$765

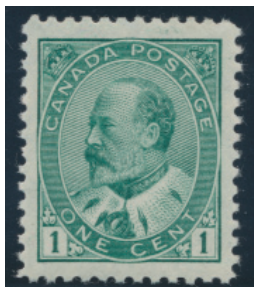


- 80 ** #87 1899 2c on 3c Carmine Queen Victoria Leaf Surcharge, mint never hinged, well centered within balanced and enormous jumbo margins, with fresh colour. It would be very difficult to find a bigger stamp. Extremely fine in all respects. Catalogue value irrelevant.
.....Unitrade \$90



- 81 **** #88 1899 2c on 3c Carmine Queen Victoria Numeral Surcharge**, mint never hinged with sheet margin at bottom, very fine and fresh.
Unitrade \$150

King Edward VII Era -- Scott #89-95



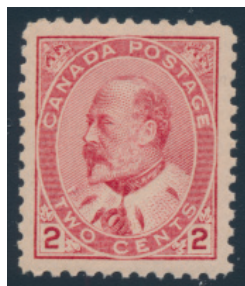
82

- 82 **** #89 1903 1c Green King Edward VII**, mint never hinged and well centered among four large and even margins, fresh and extremely fine.
Unitrade \$245



83

- 83 **** #89iii 1903 1c Blue Green King Edward VII**, mint never hinged with sheet margin at bottom, well centered among four large margins, fresh and very fine plus.
Unitrade \$315



- 84 **** #90 1903 2c Carmine King Edward VII, Type II**, mint never hinged, quite fresh and well centered, extremely fine.
Unitrade \$315



- 85 **** #90e 1903 2c Carmine King Edward VII, Type I**, mint never hinged with sheet margin at right, a fresh and extremely fine stamp. A scarce stamp, especially so nice.
Unitrade \$700



- 86 **** #90i 1903 2c Rose Carmine (Aniline Ink) King Edward VII, Type II**, mint never hinged with sheet margin at left, a very fresh stamp showing this distinctive shade, extremely fine.
Unitrade \$420



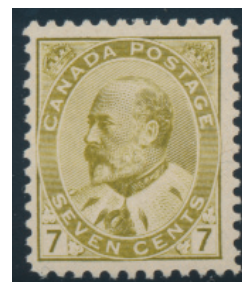
87

- 87 **** #90i 1903 2c Rose Carmine King Edward VII, Type II**, mint never hinged, quite fresh with brilliant colour and wonderful centering, extremely fine.
Unitrade \$420

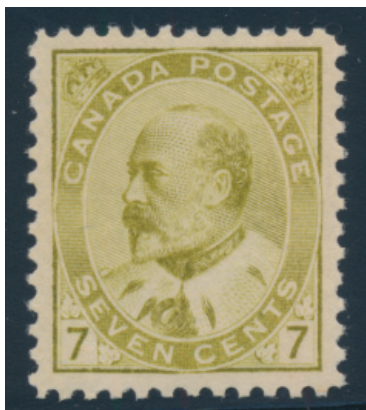


88

- 88 **** #91 1903 5c Blue King Edward VII on Bluish Paper**, mint never hinged, quite fresh with bright colour and very fine.
Unitrade \$1,225

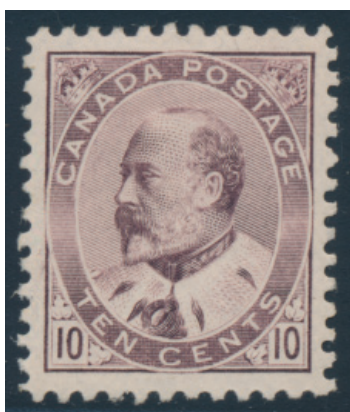


- 89 **** #92 1903 7c Olive Bistre King Edward VII**, mint never hinged and fresh, fine-very fine.
Unitrade \$1,055



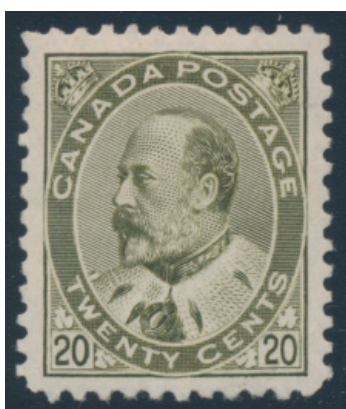
- 90 **** #92ii 1903 7c Yellow Olive Bistre King Edward VII**, mint never hinged and fresh, very fine. Accompanied by a 2021 Greene Foundation certificate.

..... Unitrade \$1,750



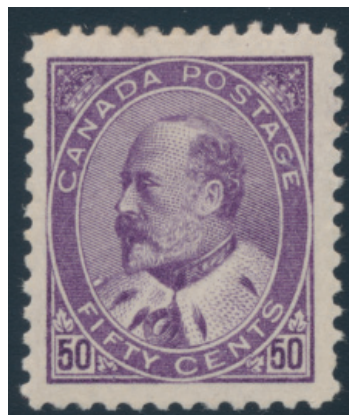
- 91 **** #93 1903 10c Brown Lilac King Edward VII**, mint never hinged and well centered, with just a bit of gum disturbance at bottom, else a lovely and very fine stamp.

..... Unitrade \$2,800



- 92 **** #94 1904 20c Olive Green King Edward VII**, mint never hinged, quite fresh with bright colour, well centered with large even margins, extremely fine.

..... Unitrade \$4,375



- 93 *** #95 1908 50c Purple King Edward VII**, mint never hinged, fresh with bright colour, well centered within four huge even margins. The gum, although never hinged, appears to have been redistributed or overall lightly disturbed, still an extremely fine stamp.

..... Unitrade \$1,500

Quebec Tercentenary Scott #96-103



x94

- 94 **** #96 1908 1/2c Black Brown Québec Tercentenary**, a group of three mint never hinged blocks (of 40, 50 and 28) for a total of 118 stamps. Some sheet selvage in places and some separation is to be expected. One stamp has gum disturbance and a few more have light adherence, counted as 8 hinged and 110 never hinged, overall very fine.

..... Unitrade \$5,070



- 95 **** #96 1908 1/2c Black Brown Québec Tercentenary**, a mint never hinged block of four, fresh and very fine.
..... **Unitrade \$180**



- 96 **** #97 1908 1c Green Québec Tercentenary**, mint never hinged and well centered among four large and even margins, extremely fine and fresh.
..... **Unitrade \$150**



- 97 **** #97i 1908 1c Green Québec Tercentenary with Hairlines in Margins**, mint never hinged and well centered among four large and even margins, extremely fine and fresh.
..... **Unitrade \$180**

Just a reminder that this sale is conducted in Canadian dollars and we charge an industry low 17% buyer's fee.



- 98 **** #98 1908 2c Carmine Québec Tercentenary**, mint never hinged lower right corner single, well centered among four large margins. There is a very light bit of gum disturbance (mentioned only for strict accuracy), still extremely fine and fresh.
..... **Unitrade \$210**



- 99 **** #98 1908 2c Carmine Québec Tercentenary**, mint never hinged and well centered, fresh and very fine plus.
..... **Unitrade \$210**



- 100 **** #99 1908 5c Blue Québec Tercentenary**, mint never hinged and well centered, with mild gum bend, still fresh and extremely fine.
..... **Unitrade \$450**



- 101** **** #100 1908 7c Olive Green Québec Tercentenary**, mint never hinged and well centered, light spot of dull gum, fresh and extremely fine. A very nice stamp in all respects.
Unitrade \$600



- 102** **** #101 1908 10c Violet Québec Tercentenary**, mint never hinged and well centered, fresh and extremely fine.
Unitrade \$900



- 103** **** #102 1908 15c Orange Québec Tercentenary**, mint never hinged and well centered, with tiny natural gum speck (mentioned strictly for the record), still fresh and extremely fine.
Unitrade \$1,050



- 104** **** #103 1908 20c Brown Québec Tercentenary**, mint never hinged and well centered, fresh and very fine.
Unitrade \$1,200



x105

- 105** **** #96-99 1908 ½c to 5c Québec Tercentenary Short Set**, all values are mint never hinged and well centered, fresh and very fine.
Unitrade \$855

King George V Era Admiral Issues Scott #104-140



106

- 106** **** #104 1911 1c Dark Green Admiral**, mint never hinged, fresh and very fine plus.
Unitrade \$120



107

- 107** **** #104 1911 1c Green Admiral**, mint never hinged, with jumbo margins all around, quite fresh and extremely fine. A lovely example of this otherwise common stamp, for the collector seeking only the very best.
Unitrade \$120



- 108** ***/** #104 1911 1c Green Admiral**, a mint plate strip of 5, with full plate 91 imprint at bottom, alongside pencil note reading "July 3 1915". Stamps are fresh and never hinged, right stamp previously hinged, overall fine-very fine. No premium given for plate inscription.
Unitrade \$305



109

**** #105 1922 1c Yellow Admiral Wet Printing, Die I, mint never hinged and quite fresh, well centered and very fine. A lovely stamp.**

..... **Unitrade \$120**



110

**** #105d 1924 1c Yellow Admiral Dry Printing, Die II, mint never hinged and quite fresh, well centered and extremely fine. A very nice stamp.**

..... **Unitrade \$90**



111

**** #105f 1924 1c Yellow Admiral Dry Printing, Die I, mint never hinged and quite fresh, well centered and extremely fine. A very nice stamp.**

..... **Unitrade \$150**



112

**** #106 1917-22 2c Carmine Pink Admiral, a mint never hinged block of four, well centered and quite fresh, very fine.**

..... **Unitrade \$480**



113

**** #106b 1911-12 Pink Admiral, mint never hinged, well centered among large margins and quite fresh, very fine. Accompanied by a 2011 Greene Foundation certificate for a block of four, from which this was the lower right stamp.**

..... **Unitrade \$600**



114

**** #106c 1914 2c Rose Carmine Admiral, mint never hinged, well centered and quite fresh, extremely fine.**

..... **Unitrade \$120**



115

**** #106v 1920 2c Deep Red Admiral, mint never hinged from upper left corner of sheet, well centered and quite fresh, extremely fine. A big and beautiful stamp.**

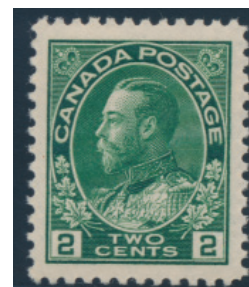
..... **Unitrade \$120**



116

**** #106vii 1917-18 2c Red Admiral, mint never hinged, well centered and very fine.**

..... **Unitrade \$120**



117

**** #107ii 1922 2c Green Admiral, Wet Printing, mint never hinged and well centered, quite fresh and extremely fine.**

..... **Unitrade \$150**



- 118** **** #107iv 1923 2c Yellow Green Admiral, Dry Printing**, mint never hinged and well centered, quite fresh and extremely fine.
Unitrade \$90



- 119** **** #107iv 1923 2c Yellow Green Admiral, Dry Printing**, a mint never hinged block of four, fresh and very fine plus.
Unitrade \$360



120



121

- 120** **** #108 1918 3c Brown Admiral, Wet Printing**, on thicker paper than normally seen, mint never hinged, with sheet margin at top and deep rich colour, well centered, very fine.
Unitrade \$150
- 121** **** #108c 1923 3c Brown Admiral, Dry Printing**, mint never hinged and well centered, quite fresh and extremely fine.
Unitrade \$150



122



123

- 122** **** #109 1923 3c Carmine Admiral, Die I**, mint never hinged, well centered among four balanced margins, with bright colour and quite fresh, extremely fine. Accompanied by a 2010 Richard Gratton AIEP certificate. A lovely stamp in all respects.
Unitrade \$90
- 123** **** #109c 1924 3c Carmine Admiral, Die II**, mint never hinged, quite fresh and well centered, extremely fine.
Unitrade \$210



124



125

- 124** **** #110d 1922 4c Yellow Ochre Admiral, Dry Printing**, mint never hinged, well centered and quite fresh, extremely fine.
Unitrade \$240
- 125** **** #111 1914 5c Dark Blue Admiral**, mint never hinged, hinged in top selvage only which shows OTTAWA of the inscription, fresh and very fine. Accompanied by a 2014 Greene Foundation certificate.
Unitrade \$900



126



127

- 126** **** #111 1914 5c Dark Blue Admiral**, mint never hinged, well centered fresh, extremely fine.
Unitrade \$900

- 127 ** #111 1914 5c Dark Blue Admiral**, mint never hinged, with deep colour, fresh and very fine.

.....Unitrade \$900



128



129

- 128 ** #112 1922 5c Violet Admiral, Wet Printing**, mint never hinged, well centered and quite fresh, extremely fine.

.....Unitrade \$180

- 129 ** #112a 1924 5c Violet Admiral on Thin Paper, Wet Printing**, mint never hinged, well centered and quite fresh, extremely fine.

.....Unitrade \$150



- 130 ** #112c 1925 5c Violet Admiral with Redrawn Line in Upper Right Spandrel, Dry Printing**, mint never hinged, well centered and quite fresh, extremely fine.

.....Unitrade \$210



- 131 ** #112i 1922 5c Grey Violet Admiral, Wet Printing**, a mint never hinged block of four, very fine. A nice example of this rarely offered shade.

.....Unitrade \$960



132



133

- 132 ** #113 1917 7c Yellow Ochre Admiral**, mint never hinged, well centered between four large margins, quite fresh and extremely fine.

.....Unitrade \$240

- 133 ** #113b 1912 7c Straw Admiral**, mint never hinged, with fresh colour, very fine plus.

.....Unitrade \$1,400



- 134 ** #114 1924 7c Red Brown Admiral, Dry Printing**, mint never hinged, fresh and very fine.

.....Unitrade \$105



- 135 ** #114 1924 7c Red Brown Admiral with 40% Type D Lathework, Dry Printing**, a mint never hinged block of four, quite fresh and very fine.

.....Unitrade \$360



136



137

- 136 ** #114b 1924 7c Red Brown Admiral, Wet Printing, mint never hinged, fresh and very fine plus.

Unitrade \$135

- 137 ** #114iv 1924 7c Red Brown Admiral with Diagonal Line in V of Seven, Wet Printing, mint never hinged, fresh and very fine plus.

Unitrade \$450



138



139

- 138 ** #114v 1924 7c Red Brown Admiral with Diagonal Line in N of CENTS, Wet Printing, mint never hinged, fresh and fine-very fine.

Unitrade \$275

- 139 ** #115 1925 8c Blue Admiral, mint never hinged with plate 1 imprint in top selvage, fresh and extremely fine.

Unitrade \$180



- 140 ** #115 1925 8c Blue Admiral, mint never hinged, fresh and every fine.

Unitrade \$180



141



142

- 141 ** #116 1912 10c Brownish Purple Admiral, mint never hinged with plate 9 imprint in upper selvage, very fine.

Unitrade \$1,200

- 142 ** #116a 1912 10c Reddish Purple Admiral, mint never hinged with sheet margin at top (with pencil note reading "Pl. I"), very fine plus.

Unitrade \$1,350



143



144

- 143 ** #117a 1922 10c Blue Admiral, Dry Printing, mint never hinged, well centered and very fine. Accompanied by a 2010 Richard Gratton AIEP certificate.

Unitrade \$210

- 144 ** #117a 1922 10c Blue Admiral, Dry Printing, mint never hinged, nicely centered and fresh, extremely fine.

Unitrade \$210



- 145 ** #117a 1922 10c Blue Admiral, Dry Printing, a mint never hinged block of six, with bright colour, fresh and overall fine-very fine.

Unitrade \$810

The Bytown Collection





146

- 146** ** #117ii 1922 10c Light Blue Admiral, Wet Printing, mint never hinged, fresh and very fine.
.....Unitrade \$240



147

- 147** ** #118 1925 10c Bistre Brown Admiral, mint never hinged, fresh and very fine.
..... Unitrade \$180



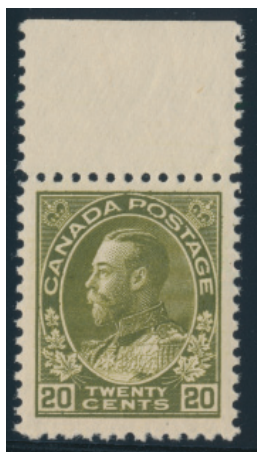
148

- 148** ** #119 1925 20c Olive Green Admiral, Dry Printing, mint never hinged, quite fresh with four large and even margins, bright colour and extremely fine. An exceptional stamp.
.....Unitrade \$450



149

- 149** ** #119b 1912 20c Sage Green Admiral, Wet Printing, mint never hinged, with bright colour and well centered. A lovely and fresh example of this scarcer shade, with a very light gum bend, else very fine.
..... Unitrade \$1,050



- 150** ** #119c 1912 20c Dark Olive Green Admiral, Wet Printing, mint never hinged with sheet margin at top, quite fresh and well centered, very fine.
.....Unitrade \$600



151

- 151** ** #119iv 1925 20c Olive Green Admiral with Retouched Vertical Line in Upper Right Spandrel, Dry Printing, mint never hinged, quite fresh and well centered, extremely fine.
.....Unitrade \$540



152

- 152** ** #120 1925 50c Black Brown Admiral, Dry Printing, mint never hinged, quite fresh and very fine. Accompanied by a 2004 Richard Gratton AIEP certificate,
.....Unitrade \$300



153

- 153** ** #120 1925 50c Black Brown Admiral, Dry Printing, mint never hinged, quite fresh and well centered, extremely fine.
.....Unitrade \$300



154

- 154** ** #120a 1912 50c Black Admiral, Wet Printing, mint never hinged, quite fresh and fine-very fine. A scarce stamp in never hinged condition. Accompanied by a 2015 Greene Foundation certificate.
..... Unitrade \$1,740



155

- 155** ** #122 1925 \$1 Orange Admiral, Dry Printing, mint never hinged, quite fresh with bright colour and well centered, extremely fine.
.....Unitrade \$360



156

- 156** ** #123 1913 1c Dark Green Admiral Coil, Perforated 8 Horizontally, mint never hinged, fresh and well centered with large margins, very fine.
.....Unitrade \$450



157



x158

- 157 */** #124 1913 2c Carmine Admiral Coil, Perforated 8 Horizontally, a mint pair, top stamp very lightly hinged, bottom never hinged, fresh and extremely fine.

.....Unitrade \$600

- 158 ** #125-130b 1912-24 1c to 3c Admiral Coil Set, Perforated 8 Vertically, with #s 125, 126d, 127, 128ii, 129ii and 130b, all six values are mint never hinged and fresh, well centered and very fine to extremely fine.

.....Unitrade \$775



x159

- 159 ** #125ii-130 1912-24 1c to 3c Admiral Coil Extended Set, Perforated 8 Vertically, all in pairs, with #s 125ii, 125iii, 126, 126d, 127, 127ii, 128, 128ii, 129 and 130, all pairs are mint never hinged and fresh, overall very fine or better.

.....Unitrade \$2,450



160

- ** #126 1923 1c Orange Yellow Admiral Coil, Perforated 8 Vertically, Dry Printing, Die II, a mint never hinged strip of 4 with large margins on every stamp, very fine plus.

.....Unitrade \$150



161

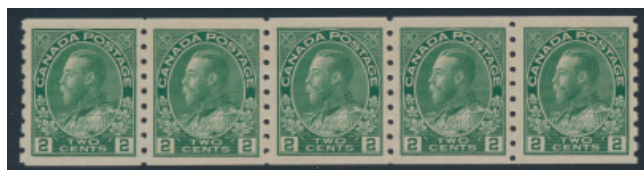
- ** #128a 1924 2c Green Admiral Part Perforate Coil Block, Dry Printing, a mint never hinged block of 40 (4 rows of 10) with sheet margins at top and bottom plus a half cutting arrow at bottom right. Fresh, not often seen and overall very fine.

.....Unitrade \$1,200





- 162 ** #128a 1924 2c Green Admiral Part Perforate Coil Block, Dry Printing,** a mint never hinged sheet of 100, with sheet margins at top, bottom and right plus a half cutting arrow at bottom left. Fresh, rare (the first we have handled) and overall very fine.
 **Unitrade \$3,000**



- 163 ** #128ii 1922 2c Green Admiral Coil, Perforated 8 Vertically, Dry Printing,** a mint never hinged strip of 5 with large margins on every stamp, well centered and extremely fine.
 **Unitrade \$250**



- 164 ** #130iii 1924 3c Carmine Admiral Paste-Up Coil, Perforated 8 Vertically, Die II, Dry Printing,** a mint never hinged strip of 4 with paste-up in middle, deep rich colour, fresh and fine-very fine.
 **Unitrade \$861**



x165

- 165 ** #131-134 1915-24 1c to 3c Admiral Coil Extended Set, Perforated 12 Horizontally,** all in pairs, with #s 131, 131i (yellowish green shade), 131ii, 132, 132iii, 133 and 134 (two different shades), all values are mint never hinged and fresh, well centered and very fine to extremely fine.
 **Unitrade \$1,750**



x166

- 166 ** #136-138 1924 1c to 3c Admiral Imperforate Set,** each value is in a mint never hinged and fresh block of four, very fine.
 **Unitrade \$1,000**



x167

- 167 ** #136-138 1924 1c to 3c Admiral Imperforate Set,** each value is in a mint never hinged horizontal pair, very fine.
 **Unitrade \$500**



x168

- 168 ** #137, 138 1924 2c and 3c Admiral Imperforates, the 2c is a sheet margin block of 8, the 3c is a block of 10 and a sheet margin block of four, all mint never hinged, fresh and very fine.

.....Unitrade \$750



- 169 ** #138 1924 3c Carmine Admiral Imperforate with Full Type D Lathework, a mint never hinged lower right corner single and a block of four, both items fresh and very fine or better.

.....Unitrade \$570



170



171

- 170 ** #139 1926 2c on 3c Carmine Admiral Single Line Provisional Surcharge, mint never hinged and well centered between four large and even margins, fresh colour and extremely fine. An outstanding stamp in all respects.

.....Unitrade \$200

- 171 ** #140 1926 2c on 3c Carmine Admiral Double Line Provisional Surcharge, mint never hinged and well centered, fresh colour and very fine plus.

.....Unitrade \$100



x172

- 172 ** #104a/109a 1911-1923 1c to 3c Admiral Booklet Panes, with #s 104a, 105a, 105b, 106a, 107b (two different shades), 108a and 109a. All fresh and mint never hinged, overall very fine.

.....Unitrade \$1,360



x173

- 173 */** #104vi/184 Selection of Mint Admiral Blocks of Four, all never hinged unless otherwise noted, with #s 104vi, 104x, 106, 106c, 106v, 107iv, 108, 108c, 109, 110c (top two hinged), 112a, 113, 114, 117a, 117ii (top right stamp lightly hinged), 119 and 184. Quite a fresh group, catalogued either as fine or very fine.

.....Unitrade \$10,964

Admiral War Tax Scott #MR1-MR7



- 174 ** #MR1-MR2 1915 1c and 2c Admiral War Tax, both mint never hinged, very fresh with balanced large margins, very fine.

.....Unitrade \$240





- 175 ** #MR1-MR2 1915 1c and 2c Admiral War Tax, both in mint never hinged blocks of 4, fresh and well centered, 2c has a natural straight edge at left, very fine plus.
Unitrade \$960



176

- 176 ** #MR2Bi 1915 5c Blue Admiral with INLAND REVENUE WAR TAX Overprint, mint never hinged, quite fresh with deep colour, very fine.
Unitrade \$1,200



177

- 177 ** #MR2C 1915 20c Olive Green Admiral Overprinted WAX TAX, mint never hinged with plate inscription margin at bottom, fresh and well centered among large margins, extremely fine.
Unitrade \$720



- 178 ** #MR2C 1915 20c Olive Green Admiral Overprinted WAX TAX, mint never hinged and well centered, very fine plus.
Unitrade \$720



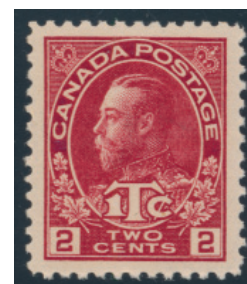
- 179 ** #MR2D 1915 50c Black Admiral with WAR TAX Overprint in Red, mint never hinged and very fresh, with only a tiny inclusion on the gum, else a very fine stamp.
Unitrade \$2,000



- 180 ** #MR2Di 1915 50c Black Admiral Overprinted INLAND REVENUE WAX TAX, mint never hinged with four large and balanced margins, fresh and extremely fine. A rare stamp in this exceptional condition.
Unitrade \$2,000



181



182

- 181 ** #MR3 1916 2c + 1c Carmine Admiral War Tax, Die I, mint never hinged, with four very large margins and bright fresh colour, extremely fine. A lovely stamp.
Unitrade \$180
- 182 ** #MR3a 1916 2c + 1c Carmine Admiral War Tax, Die II, mint never hinged with four large margins and bright fresh colour, extremely fine. A lovely example of this scarce stamp.
Unitrade \$1,200



- 183 **** #MR3b 1916 2c + 1c Rose Red Admiral War Tax, Die I**, mint never hinged with distinct bright fresh colour of this shade, very fine.
Unitrade \$225



184

- 184 **** #MR4 1915 2c + 1c Brown Admiral War Tax, Die II with 50% Type A Lathework**, mint never hinged, with deep rich colour and crisp impression, an extremely fine stamp in all respects. Accompanied by a 2010 Richard Gratton AIEP certificate.
Unitrade \$480

- 185 **** #MR4 1916 2c + 1c Brown Admiral War Tax, with 50% Type A Lathework**, mint never hinged with fresh colour and well centered among large margins, extremely fine. A lovely stamp in all respects.
Unitrade \$480



- 186 **** #MR4a 1916 2c + 1c Brown Admiral War Tax, Die I**, mint never hinged with large margins and quite fresh, extremely fine. A rare stamp in such lovely condition.
Unitrade \$4,050



- 187 **(*) #MR4b 1916 2c + 1c Brown Admiral War Tax Imperforate, Die I**, an unused (no gum, as issued) horizontal pair, fresh and with large even margins, extremely fine.
Unitrade \$275



- 188 **** #MR5 1916 2c + 1c Carmine Admiral War Tax, Perforated 12 x 8**, mint never hinged, with bright, fresh colour and well centered among large margins, extremely fine.
Unitrade \$240



- 189 **** #MR6 1916 2c + 1c Carmine Admiral War Tax Coil**, a mint never hinged pair, with bright, fresh colour and well centered among large margins, extremely fine. A lovely pair in all respects.
Unitrade \$1,200



- 190 **** #MR6 1916 2c + 1c Carmine Admiral War Tax Coil**, a mint strip of four, with three stamps never hinged and right stamp hinged, all stamps are well centered among large margins, fresh and bright colour, extremely fine.
Unitrade \$2,000



191

191 ** #MR6 1916 2c + 1c Carmine Admiral War Tax Coil, mint never hinged, with bright, fresh colour and well centered, extremely fine.

.....Unitrade \$600



192

192 ** #MR7 1916 2c + 1c Brown Admiral War Tax Coil, Die II, a mint never hinged single, fresh and very fine.

.....Unitrade \$210



193 ** #MR7 1916 2c + 1c Brown Admiral War Tax Coil, Die II, a mint never hinged pair, fresh with deep rich colour and great centering among large and even margins, extremely fine.

.....Unitrade \$420



194 */** #MR7 1916 2c + 1c Brown Admiral War Tax Coil, Die II, a mint strip of four with three never hinged stamps, second from right is lightly hinged. A choice strip, with each stamp possessing large and even margins, as well as deep rich colour, extremely fine.

.....Unitrade \$700



195 ** #MR7iii 1916 2c + 1c Yellow Brown Admiral War Tax Coil, Die I, a mint never hinged strip of four, all stamps are nicely centered, very fine to extremely fine. A scarce strip, especially so nice.

.....Unitrade \$3,000

Confederation Series Scott #135, 141-148



196

** #135 1917 3c Brown Confederation, mint never hinged, fresh and well centered, very fine plus.

.....Unitrade \$210



x197

197

** #141-148 1927 Confederation and Historical Issue Sets, all mint never hinged and fresh, each stamp was selected for its freshness and centering, extremely fine.

.....Unitrade \$252



x198

198

** #146-148 1927 5c to 20c Historical Issue Set, each value in a mint never hinged block of four, quite fresh and well centered, very fine to extremely fine.

.....Unitrade \$528

Scroll Issue Scott #149-161



x199

- 199 **** #149-159 1928-29 1c to \$1 King George V Scroll Issue Set**, with each stamp being mint never hinged, fresh and extremely fine. A superior set.

.....Unitrade \$2,180



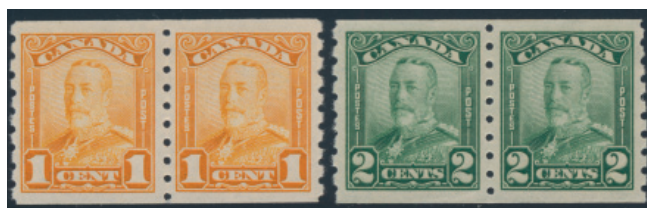
- 200 **** #149b 1928 1c Orange King George V Scroll Imperforate**, a mint never hinged upper left corner pair, quite fresh with large margins, extremely fine.

.....Unitrade \$225



- 201 **** #155a 1928 10c Green Mount Hurd Imperforate**, a mint never hinged lower marginal pair, quite fresh with large margins, very fine.

.....Unitrade \$375



- 202 **** #160-161 1929 1c and 2c King George V Scroll Coil**, each in a mint never hinged pair, quite fresh and well centered, extremely fine.

.....Unitrade \$480



- 203 **** #160-161 1929 1c and 2c King George V Scroll Coil**, each in a mint never hinged strip of 4, fresh and overall fine to very fine.

.....Unitrade \$600

Arch-Leaf Issue Scott #162-183



x204

- 204 **** #162-177 1930-31 1c to \$1 King George V Arch Issue Set**, including both dies of the 1c green, each stamp is mint never hinged and fresh, very fine to extremely fine. A very nice set.

.....Unitrade \$1,680



- 205 **** #165 1930 2c Deep Red King George V Arch**, a mint never hinged complete sheet of 100, with plate 4 imprint in lower left corner. Previously folded once, with separation at bottom between two stamps, very fine.

.....Unitrade \$507

The Bytown Collection





- 206 **** #176 1930 50c Dull Blue Grand Pré**, mint never hinged, quite fresh and well centered, extremely fine.
Unitrade \$600



- 207 **** #177 1930 \$1 Olive Green Mount Edith Cavell**, mint never hinged, quite fresh and well centered, extremely fine.
Unitrade \$600

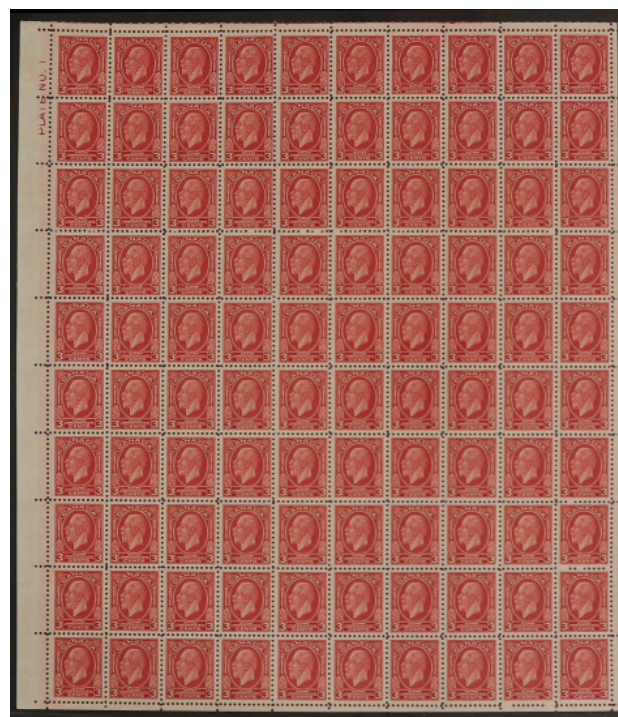


- 208 **** #177 1930 \$1 Olive Green Mount Edith Cavell**, a mint never hinged lower margin block of four, fresh and well centered, very fine.
Unitrade \$2,400

Medallion Issue etc. Scott #184-210



- 209 **** #184 1931 3c Carmine Admiral Provisional Issue**, Perforated 12 x 8, a mint never hinged block of 8 with bright colour and all stamps well centered, very fine plus and fresh. A seldom offered stamp, especially in this condition.
Unitrade \$288



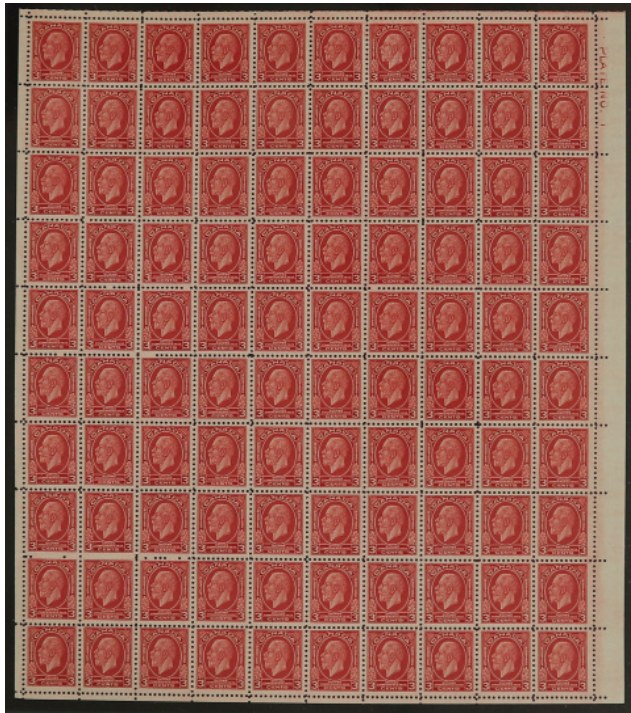
- 210 **** #192 1932 3c Deep Red King George V Ottawa Conference**, a mint never hinged complete sheet of 100, with plate 1 imprint in upper left corner, very fine.
Unitrade \$400

Subscribe To Our Mailing List

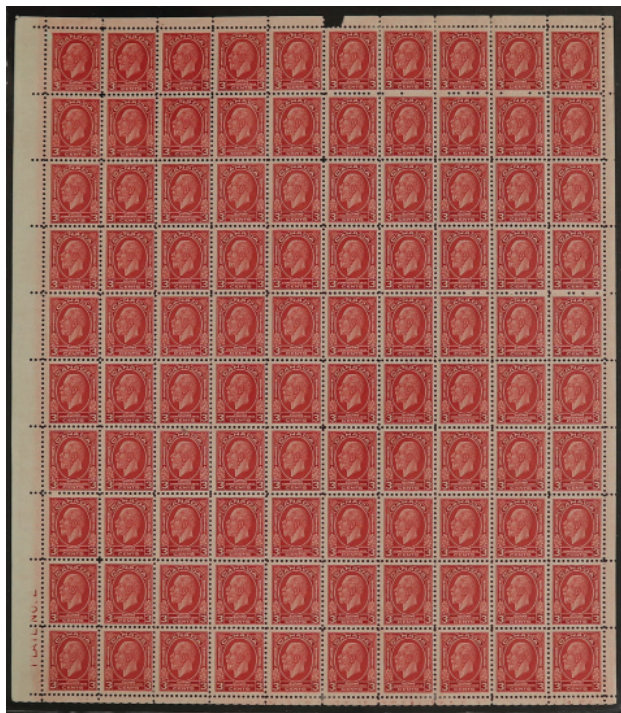
Are you getting announcements of future auction dates and other important news?

We send out e-mails fewer than a dozen times a year, so you will only get reminders about upcoming sales, and important information on what's new with us. We will be glad to sign you up, just send us an e-mail with your address.

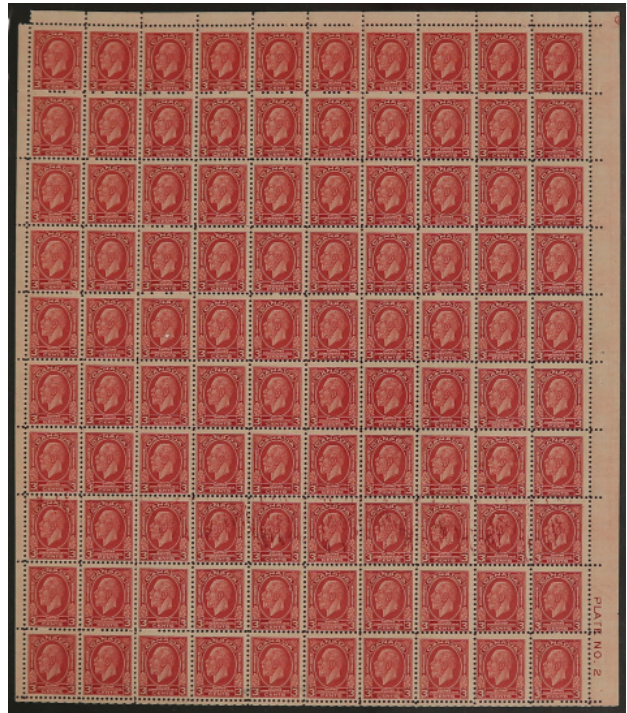
You can also manage your own mailing list subscription on our site. Go to sparks-auctions.com and look for the menu link under About Us. If you have chosen "don't send me e-mails" in your Stamp Auction Network account, or you have unsubscribed to the mailing list in the past, we cannot change your settings for you, and you will have to follow the link to do so yourself.



211 ** #192 1932 3c Deep Red King George V Ottawa Conference, a mint never hinged complete sheet of 100, with plate 1 imprint in upper right corner, very fine.
.....Unitrade \$400



212 ** #192 1932 3c Deep Red King George V Ottawa Conference, a mint never hinged complete sheet of 100, with plate 2 imprint in lower left corner, missing a tiny bit of selvage at top, else overall very fine.
.....Unitrade \$400



213 ** #192, 192i 1932 3c Deep Red King George V Ottawa Conference, a mint never hinged complete sheet of 100, with plate 2 imprint in lower right corner. Position 87 shows the "broken E" variety, and there are several stamps affected by heavy deep red ink smears, especially along row 8. There is separation of 6 stamps between columns 6 and 7, fine and interesting.
.....Est \$150



x214

214 ** #195-201 1932 1c to 13c King George V Medallion Issue Set, with each value in a mint never hinged marginal block of four, quite fresh and overall very fine.
.....Unitrade \$1,600



x215

- 215 **** #195-201 1932 1c to 13c King George V Medallion Issue Set**, mint never hinged, well centered and fresh, very fine to extremely fine.
Unitrade \$400



x216

- 216 **** #205-207 1933 1c to 3c King George V Medallion Coil Set**, all in mint never hinged strips of four, including an extra strip of four of the 1c with line pair in middle. A fresh and very well centered group, extremely fine and select.
Unitrade \$682



x217

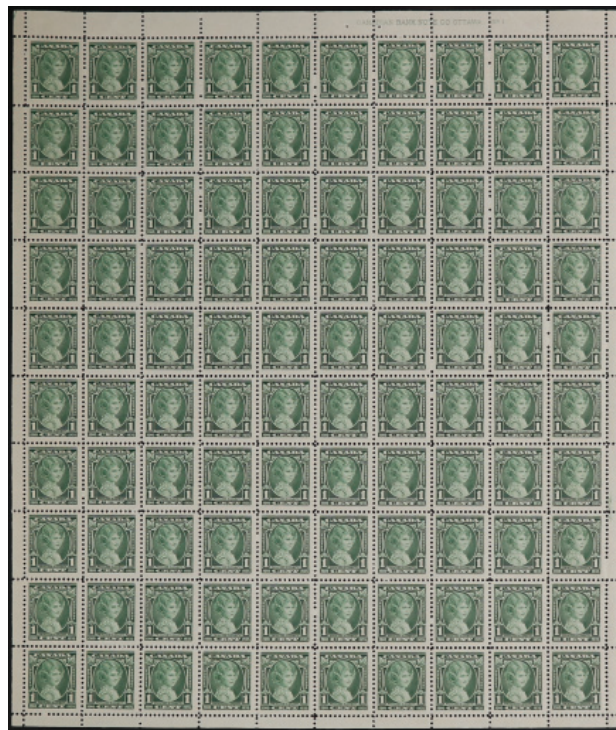
- 217 **** #228-230 1935 1c to 3c King George V Pictorial Coil Set**, with 1c (strip of 4), 2c (pair) and 3c (two pairs). All are fresh, mint never hinged and extremely fine.
Unitrade \$315

SPARKS
 ★ AUCTIONS

We are always seeking nice material for our sales. Contact Stéphane to discuss your consignments to our future auctions.

stephane@sparks-auctions.com

Silver Jubilee Issue Scott #211-216



x218

- 218 **** #211, 212 1935 1c and 2c Silver Jubilee Group of Three Sheets of 100**, the 1c sheet has a plate 1 inscription at upper right, and there are two 2c sheets, a plate 2 at lower left (missing a piece of selvage) and a plate 1 at top (with offset on 10 stamps). Overall very fine.
Unitrade \$325



- 219 **E/P #212P 2c Duke of York Plate Proof in Brown**, a block of four on card-mounted India paper, very fine.
Unitrade \$300

Pictorial Issue Scott #217-230



x220

- 220 ** #217-227 1935 1c to \$1 King George V Pictorial Set, with each stamp being mint never hinged, very fresh and well centered, extremely fine. A superior set.

.....Unitrade \$262



x221

- 221 ** #217-227 1935 1c to \$1 King George V Pictorial Set, each value is in a mint never hinged block of four, very fresh and well centered, the \$1 block has a plate inscription at top (no premium given), very fine to extremely fine.

.....Unitrade \$1,050



x222

- 222 ** #149a/219a Group of 11 Different King George V Booklet Panes, all mint never hinged, with #s 149a, 150a, 153a, 163c, 164a, 165b, 195b, 217b, 218a, 218b and 219a. Overall very fine, 153a catalogued as fine.

.....Unitrade \$1,230

King George VI Era (1937-1952) – Scott #231-320



x223

- 223 ** #231/245 1937-38 1c to \$1 King George VI Mufti and Pictorial Sets, with each stamp being mint never hinged, very fresh and well centered, extremely fine. A superior set.

.....Unitrade \$341



x224

- 224 ** #249-262 1942-43 1c to \$1 King George VI War Issue Set, with each stamp being mint never hinged, very fresh and well centered, extremely fine. A superior set.

.....Unitrade \$256



x225

- 225 ** #202/321 Selection of 29 Different KGV and KGVII Era Blocks of Four, all mint never hinged, with #s 202, 204, 208 (LL plate block), 209 (LL plate block), 216, 218-224, 226, 227, 241, 241a, 243, 256, 259, 262, 267-273, 302 and 321. Overall fine to very fine.

..... Scott U\$2,161





x226

- 226 ** #302, 321 Group of Two 1\$ Issue Plate Blocks, with #s 302 (UR and UL) and 321 (LR and LL), all mint never hinged and very fine.
.....Unitrade \$600

Queen Elizabeth II Era (1953-) – Scott #321 and on



227

- 227 ** #454f 1967 1c Brown Centennial Printed on Gum Side, mint never hinged, fresh and fine. A rare Centennial item missing in most collections.
.....Unitrade \$1,500



228

- 228 ** #468Ac 1969 6c Orange Centennial Coil with Dull Fluorescence, Imperforate, a mint never hinged strip of 4, perforated at top and below top stamp only, leaving two bottom stamps completely imperforate and one stamp imperforate at bottom, very fine.
.....Unitrade \$400



- 229 ** #604a 1974 8c Royal Blue Queen Elizabeth II Coil with Low Fluorescence, Imperforate, a mint never hinged horizontal strip of 5, with left 2 stamps perforated on each side, right 3 stamps imperforate, very fine.

.....Unitrade \$200



- 230 ** #604a 1974 8c Royal Blue Queen Elizabeth II Coil with Low Fluorescence, Imperforate, a mint never hinged horizontal strip of 5, with left stamp perforated on both sides, right 4 stamps imperforate, very fine.

.....Unitrade \$200



- 231 ** #605a 1976 10c Dark Carmine Queen Elizabeth II Coil Imperforate, a mint never hinged horizontal strip of 4, with left 2 stamps perforated on each side, right 2 stamps imperforate, very fine.

.....Unitrade \$225



- 232 ** #605a 1976 10c Dark Carmine Queen Elizabeth II Coil Imperforate, a mint never hinged horizontal strip of 5, with left 2 stamps perforated on each side, right 3 stamps imperforate, very fine.

.....Unitrade \$225



- 233 ** #614a 1973 15c R.C.M.P. Musical Ride Imperforate, a mint never hinged upper right corner block of four, quite fresh and very fine.

.....Unitrade \$1,200



- 234 **** #1172h 1990 45c Pronghorn Imperforate**, a mint never hinged right marginal vertical pair, extremely fine.
 **Unitrade \$1,200**



- 235 **** #1172h 1990 45c Pronghorn Imperforate**, a mint never hinged right marginal block of four, extremely fine.
 **Unitrade \$2,400**



x236

- 236 **** Group of Three Different Definitive Issues Printed on Gum Side**, with #s 591a, 715a and 918c, all three mint never hinged and very fine.
 **Unitrade \$370**



x237

- 237 **** Group of Four Different Imperforate Definitive Issues**, with #s 729a (pair, \$200), 1194Bf (strip of four, \$500), 1396a (pair, \$200) and 2008a (pair, \$200). All mint never hinged and very fine.
 **Unitrade \$1,100**



x238

- 238 **** Impressive Collection of Misperforated Singles and Multiples, 1952-1998**, with 15 different issues, all neatly displayed on black stock pages, with each item showing a dramatic misperforation, either vertically or horizontally. We noted #s 316 (20c forestry pair), 327 (2c Karsh block of four hinged at top), 334 (50c textile marginal single), 363 (25c Chemical Industry marginal pair), 404 (4c Cameo marginal block of four), 415 (15c Canada Goose single), 518 (6c Lisner marginal single), 591 (6c Pearson marginal block of four), 605 (10c QEII coil strip of four), 920 (5c Bucket marginal block of four), 1163 (37c parliament single), 1165 (38c Parliament marginal block of four), 1362 (46c Flag marginal pair and marginal single), C1 (5c Airmail horizontal pair) and J28i (1c Due marginal pair). All NH except where noted. A visually impressive collection which would be ideal to expand on.
 **Est \$1,000**



Back of the Book
Airmails Scott #C1-CE4



- 239 ** #C2 1930 5c Olive Brown Airmail, a mint never hinged block of four, fresh and well centered, very fine to extremely fine.
Unitrade \$560

Special Delivery Scott #E1-E11



- 240 ** #E1a 1898 10c Green Special Delivery, mint never hinged, a gorgeous and fresh stamp with large, even margins, extremely fine. For the discriminating collector.
Unitrade \$600



- 241 ** #E1ii 1898 10c Yellow Green Special Delivery with No Shading in Value Tablet, mint never hinged, well centered and quite fresh, very fine plus.
Unitrade \$600



- 242 ** #E2 1922 20c Carmine Special Delivery, Dry Printing, mint never hinged, very well centered and fresh, extremely fine.
Unitrade \$450



- 243 ** #E2a 1922 20c Scarlet Special Delivery, Wet printing, mint never hinged, very well centered and fresh, extremely fine. Accompanied by a 2018 Greene Foundation certificate.
Unitrade \$900



- 244 ** #E3 1927 20c Orange Special Delivery, mint never hinged, very well centered with fresh colour, extremely fine.
Unitrade \$180



- 245 ** #E5 1932 20c Henna Brown Special Delivery, a mint never hinged sheet margin block of four, fresh and well centered, very fine.
Unitrade \$720



x246

- 246 ** #E1/E5 Group of 5 Mint Never Hinged Special Delivery Stamps, with E1a, E3, E4 (two singles, one with enormous margins but with yellowed gum) and E5. All very fine or better and fresh.
.....Unitrade \$1,290

Registration Scott #F1-F3



- 247 ** #F1 1875 2c Orange Registration, a mint upper left corner single, never hinged (hinged in margin only) and showing "TWO CENTS" in the upper margin. A wonderful stamp, with bright colour and large margins, very fine.
.....Est \$350



- 248 * #F1b 1888 2c Rose Carmine Registration, mint with full original gum, very lightly hinged. A very nice example of this Montreal Gazette printing, with fresh colour and well centered, extremely fine. Accompanied by a 2004 Greene Foundation certificate describing it as never hinged.
.....Unitrade \$500



- 249 ** #F2i 1876 5c Green Registration, mint with full original gum, never hinged and with large, even margins. A remarkably fresh stamp with natural light gum streaks which do not deter to its beauty, extremely fine.
.....Unitrade \$600

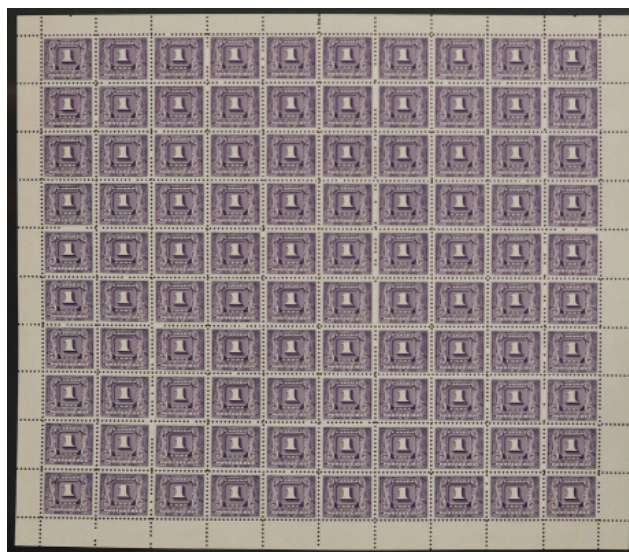


- 250 ** #F2i 1876 5c Green Registration, mint with full original gum, never hinged and with large margins. A remarkably fresh stamp showing a plate imprint along the full length of the sheet margin, extremely fine.
.....Unitrade \$600



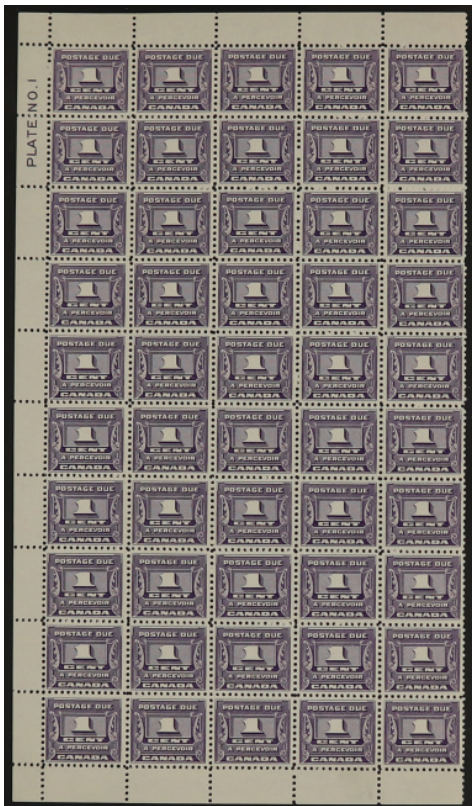
- 251 ** #F3 1876 8c Blue Registration, appears mint never hinged, but the gum is overall lightly disturbed, so counted as hinged. A very well centered stamp with bright colour, fresh and extremely fine.
.....Unitrade \$900

Postage Dues Scott #J1-40



- 252 ** #J6 1930 1c Dark Violet Postage Due, a complete sheet of 100, with full selvage on four sides and no plate inscription. Never folded and fresh, with only a natural paper inclusion on gum of position 91, overall very fine.
.....Unitrade \$4,000





- 253 ** #J11 1933 1c Dark Violet Postage Due, a mint never hinged left half sheet of 50, showing plate 1 inscription at upper left, fresh and very fine. A scarce plate block.
.....Unitrade \$2,530



- 254 ** #J11 1933 1c Dark Violet Postage Due, a mint never hinged right half sheet of 50, showing plate 1 inscription at upper right, fresh and very fine. A scarce plate block.
.....Unitrade \$2,530



x255

- 255 ** #J11-J14 1933-34 1c to 10c Postage Due Set, all in mint never hinged blocks of four, with fresh colour and great centering, very fine to extremely fine.
.....Unitrade \$920



x256

- 256 ** #J1/J14 Superior Group of Early Postage Dues, all mint never hinged and complete in range of J1 to J14 except missing J10. These were all hand picked for their freshness, centering and overall quality, an extremely fine group which would be difficult to replicate.
.....Unitrade \$1,050

Officials Scott #OA1-OAE9, 01-0273, OC1-OC9, OE1-OE11



- 257 ** #09 1949 50c Green Lumbering Official Overprinted O.H.M.S., mint never hinged and well centered among four large balanced margins, very fine.
.....Unitrade \$330



x258

- 258 ** #01-010 1949-50 1c to \$1 Peace Issue Official Set, Overprinted O.H.M.S., all stamps are mint never hinged, fresh and well centered, an extremely fine and select set.
.....Unitrade \$540

Officially Sealed Scott #OX1-OX4



- 259 * #OX1 1879 Yellow Brown Officially Sealed, a mint left marginal block of four with full original gum, lightly hinged. With significant horizontal perf separation (hinge re-enforced) and fine-very fine. A rare multiple.
.....Unitrade \$1,800



- 260 ** #OX4 1913 Brown Black officially Sealed, mint never hinged, with fresh colour and nicely centered, very fine plus.
.....Unitrade \$600

Proud partner sponsor of



Federal Revenues



- 261 ** #FB41, 41a 1868 4c Brown Queen Victoria Fourth Bill Issue, Imperforate at Left, a mint block of nine with full original gum, never hinged, with left side completely imperforate vertically. Fine and appealing.
.....van Dam \$360



- 262 ** #FCF4 1949-71 \$2 Brown Consular Fee Stamp, a complete mint never hinged right hand pane of 50, with sheet margins on three sides and white gum, fresh and very fine.
.....van Dam \$3,575

The Bytown Collection



- 263 **** #PWF3 1943 Black on Red Prisoner of War Free Frank**, mint never hinged, quite fresh and very fine. A scarce stamp, especially this nice, rarely offered.
 **Unitrade \$1,000**



- 264 **(*) #TBT17 1905 10c Black on Pink Bell Telephone Company Frank**, an unused (no gum, as issued) complete pane of 5, watermarked in left sheet margin, very fine and scarce.
 **van Dam \$525**

Provincial Revenues



x265

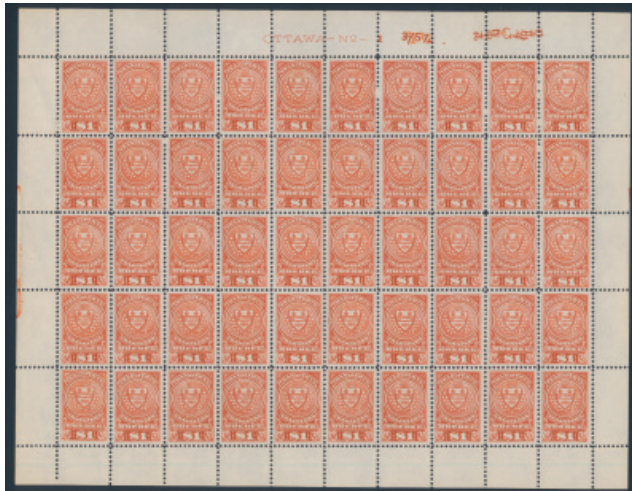
- 265 **** #QP2/6 1919 Group of 5 Prohibition Stamps**, with QP2 (with sheet margin), QP3 (two distinct shades), QP5 and QP6, all mint never hinged and quite fresh with bright colours, a very fine and scarce group in such lovely condition.
 **van Dam \$310**



- 266 *** #QP9 1919 \$5 Blue Green Prohibition Stamp**, mint and appears never hinged, but we have catalogued it as hinged because of a very light gum blemish. A rare and very fine stamp.
 **van Dam \$1,250**



- 267 *** #QP10 1919 \$10 Blue Violet Prohibition Stamp**, mint and appears never hinged, but we have catalogued it as hinged because of a very light gum blemish. Small gum residue on front, else a rare and very fine stamp.
 **van Dam \$1,250**



- 268 ** #QST15 1907 \$1 Red Québec Stock Transfer Tax Stamp, a complete sheet of 50, with full selvage all around and showing "Ottawa No. 1" plate inscription at top, alongside a few corrected printing order inscriptions. A remarkably fresh sheet which has never been folded, very fine.
.....van Dam \$650



x269

- 269 */** #SL24-SL29 1907 Group of 6 Different Mint Black on Green Typeset Law Stamps, 25c (hinged) plus never hinged 50c, 75c, \$1, \$2 and \$3, overall fine or better and fresh.
.....van Dam \$380



- 270 * #SL30 1907 \$5.00 Black on Green Typeset Law Stamp, mint lightly hinged fine with small toning spot, scarce.
.....van Dam \$650

British Columbia and Vancouver Island



271

- 271 ** #7a 1867 3d Pale Blue Seal of British Columbia, mint with full original gum, never hinged (scarce thus) and well centered, a few uneven perfs on one side, very fine. Catalogue value is for hinged only.
.....Unitrade \$600



272

- 272 * #7a 1867 3d Pale Blue Seal of British Columbia, mint with full original gum, lightly hinged and well centered, very fine.
.....Unitrade \$600



- 273 * #7a 1865 3d Pale Blue Seal of British Columbia, a mint block of four with full original gum, hinged and well centered, very fine.
.....Unitrade \$2,400



- 274 * #8 1867 2c on 3d Brown Seal of British Columbia Surcharge, mint with full original gum, very lightly hinged and quite fresh, very fine.
.....Unitrade \$200



New Brunswick Pence



- 275 **E/P #5P 5c Connell Plate Proof in Brown**, a lower sheet margin block of four on card-mounted India paper, extremely fine.
.....Unitrade \$1,200

New Brunswick Cents



- 276 ***/** #8 1860 5c Yellow Green Queen Victoria**, a mint horizontal block of 12, with original gum, 8 stamps are never hinged but have light disturbance. An overall fine and rare multiple, especially with original gum.
.....Est \$250



- 277 **** #9 1860 10c Vermilion Queen Victoria**, a mint block of four with full original gum, never hinged. The block is well centered and has many perforation disks still present, very fine and scarce as never hinged.
.....Unitrade \$900



- 278 ***/** #9 1860 10c Vermilion Queen Victoria**, a mint sheet margin block of 6 with original gum, 5 stamps are never hinged and the upper left stamp is missing half its gum. The top right stamp has a natural crease and there are gum spots on front, as is so often seen on this issue, overall fine.
.....Est \$100



- 279 **** #10 1860 12½ Blue Steamship**, mint with full original gum, never hinged. A well centered stamp with rich colour, very fine. A very difficult stamp in this condition.
.....Unitrade \$375

Nova Scotia Pence



- 280 **(*) #4 1851 6d Yellow Green Heraldic Imperforate**, unused (no gum), with large to clear margins and a light corner crease under "Pence", else very fine. Accompanied by a 2007 Greene Foundation certificate. A scarce unused stamp.
.....Unitrade \$7,500

Nova Scotia Cents



- 281 ** #10 1860 5c Blue Queen Victoria on White Paper**, mint with full original gum, never hinged and quite scarce thus. A fine and rare stamp in this condition.
.....Unitrade \$625



- 282 ** #13 var 1860 12½c Black Queen Victoria with Constant Plate Varieties**, a mint horizontal strip of four with full original never hinged gum. This is reported to be from positions 35-38, with the left stamp showing an incomplete frameline at bottom and the right stamp having an incomplete scroll at upper left. A very fine and fresh strip, with two interesting constant plate varieties not often offered. Catalogue value is for regular stamps only.
.....Unitrade \$480



x283

- 283 ** #8/13 Group of 5 Different Mint Never Hinged Cents Issues**, with #s 8, 8a, 11, 12 and 13, all fresh with full original never hinged gum, very fine.
.....Unitrade \$270

Prince Edward Island



x284

- 284 ** #6/16 Group of 9 Different Mint Never Hinged Beauties**, with #s 6, 9, 9a, 11, 11i, 11iii, 15 and 16 (two shades). Each stamp has been hand picked out of a large stock for this lot, each for their freshness and centering. A very fine to extremely fine group.
.....Unitrade \$254

Newfoundland Pence



- 285 */** #1 1857 1d Brown Violet Heraldic Imperforate**, a mint block of four with full original gum, top two are never hinged, bottom two lightly hinged, overall fine-very fine.
.....Unitrade \$880



- 286 **** #8 1857 8d Scarlet Vermillion Heraldic Imperforate**, mint with full original gum, never hinged. A gorgeous and fresh stamp with four large margins and extremely fine. Accompanied by a 2018 Greene Foundation certificate.
 **Unitrade \$1,500**



- 287 **** #11A 1860 3d Green Heraldic Imperforate, Unwatermarked**, mint with full original gum, never hinged with large even margins, very fine.
 **Unitrade \$360**



- 288 **** #11A 1860 3d Green Heraldic Imperforate, Unwatermarked**, a mint "square" marginal pair with full original gum, never hinged with large margins, very fine.
 **Unitrade \$720**



- 289 **** #12A 1860 5d Violet Brown Heraldic Imperforate, Unwatermarked**, an upper sheet margin block of four, with full original gum, never hinged. A fresh and very fine block, ex. Dennis Dunn. Accompanied by a 1994 Greene Foundation certificate.
 **Unitrade \$960**



- 290 ***/** #12A 1860 5d Violet Brown Heraldic Imperforate, Unwatermarked**, a mint lower sheet margin block of four, with full original gum, top pair with trace of previous hinge, bottom pair never hinged, fresh and overall very fine.
 **Unitrade \$720**



- 291 **** #18 1861 4d Rose Heraldic Imperforate, Unwatermarked**, a mint upper right corner block of four, with full original gum, never hinged. A super fresh block, extremely fine.
Unitrade \$400



- 292 *** #19 1860 5d Reddish Brown Heraldic Imperforate, Unwatermarked**, a mint block of four with full original hinged gum, bright colour and very fine.
Unitrade \$400



- 293 ***/** #19 1860 5d Reddish Brown Heraldic Imperforate, Unwatermarked**, a mint complete sheet of 40 (5 rows of 8), with full original gum. Two stamps only are hinged, leaving 38 fresh and never hinged stamps. Plate position 34 clearly shows the major re-entry as described on Ralph Trimble's re-entries web site. This is only listed in Unitrade for the 1857 printing (Scott 5i) and not for this printing. The sheet has been folded in two places in the margins, and is otherwise very fine and rarely offered.
Unitrade \$7,800





- 294** ** #20, 20ii 1860 6d Rose Heraldic Imperforate, a mint complete pane of 20, with full original gum, never hinged. 10 stamps show the complete "STACEY WISE / 1858" watermark. A fresh sheet with bright colour, light bend in margin only at top right, very fine.

.....Unitrade \$1,800



- 295** ** #21 1861 6½d Rose Heraldic Imperforate, Unwatermarked, a mint left sheet margin horizontal pair, with full original gum and never hinged, large margins all around and fresh, extremely fine.

.....Unitrade \$480

Newfoundland Cents



- 296** ** #27 1879 10c Black Prince Albert on White Paper, a mint horizontal pair with full original gum, never hinged. A fresh pair showing vertical lines (part of the printing process), most noticeable on the left stamp, fine. Accompanied by a photocopy of a 1980 R.P.S.L. certificate for a block of four, for which this is the lower pair. Ex Sir Gawaine Baillie.

.....Unitrade \$800



297

- 297** ** #27 1879 10c Black Prince Albert on White Paper, mint with full original gum, never hinged. A fresh stamp which is well centered, very fine. Accompanied by an R.P.S.L. certificate for a block of four, for which this was the upper right stamp. Ex Sir Gawaine Baillie.

x298



- 298** E/P #28Pi/35TCiv Group of Early Plate Proofs, with #s 28Pi, 32TCvii, 33TCi, 35P and 35TCiv. All very fine.

.....Unitrade \$490



299

- 299** ** #28 1870 12c Pale Red Brown Queen Victoria on White Paper, mint with full original gum, never hinged, quite fresh and very fine.

.....Unitrade \$360



300

- 300** ** #29 1894 12c Brown Queen Victoria, mint with full original gum, never hinged and quite fresh, very fine.

.....Unitrade \$300



- 301** ** #29 1894 12c Brown Queen Victoria, a mint block of four with full original gum, never hinged and quite fresh, extremely fine. A rare multiple, especially this nice.

.....Unitrade \$1,200



302



303

- 302 **** #29 1894 12c Brown Queen Victoria**, mint with full original gum, never hinged. This stamp is of the utmost quality, with fresh colour, pristine gum and great centering, extremely fine. Ex Dennis Dunn and destined to adorn the finest collections. Accompanied by a 1991 Greene Foundation certificate.

.....Unitrade \$300

- 303 **** #30 1866 13c Orange Ship**, mint with full original gum, never hinged and remarkably fresh, very fine.

.....Unitrade \$900



- 304 **** #30 1866 13c Orange Ship**, a mint block of four with full original gum, never hinged and remarkably fresh, very fine. A rare multiple, especially so nice. Ex Sir Gawaine Baillie.

.....Unitrade \$3,600



- 305 **** #35 1870 6c Dull Rose Queen Victoria**, mint with full original gum, never hinged and very fine.

.....Unitrade \$165



- 306 ***/** #35, 35i 1870 6c Dull Rose Queen Victoria with "Falling Rocks" Variety**, a mint block of four with full original gum, top two stamps hinged, bottom two never hinged (lower right has gum disturbance). The upper right stamp shows the "Falling Rocks" constant plate variety at right, from position 42. Small stain at top of upper right stamp, else overall fine-very fine.

.....Est \$250



307



308

- 307 **** #36 1894 6c Carmine Rose Queen Victoria**, a mint never hinged lower margin single, with full original gum, never hinged. A remarkable stamp in all respects, with its bright fresh colour and respectable centering, plus its "mile long" selvedge showing a plate imprint along the whole width of the stamp, very fine.

.....Unitrade \$210

- 308 **** #36 1894 6c Carmine Rose Queen Victoria**, mint with full original gum, never hinged. A lovely stamp, with brilliant colour and quite fresh, extremely fine.

.....Unitrade \$210



- 309 ***/** #36 1894 6c Carmine Rose Queen Victoria**, a mint upper plate block of 6, with full original gum, the two left stamps being never hinged. A fresh block showing the full plate inscription centered in the upper margin, very fine.
Unitrade \$700



- 310 *** #38 1879 2c Green Codfish, Rouletted**, mint with full original gum, lightly hinged and well centered, very fine. A very nice stamp.
Unitrade \$300



- 311 **** #40 1876 5c Blue Harp Seal, Rouletted**, mint with full original gum, never hinged and fine-very fine.
Unitrade \$750



- 312 *** #40 1876 5c Blue Harp Seal, Rouletted**, a mint right marginal single, with original hinged gum, showing a plate imprint along the whole length of the right margin, well centered and extremely fine. Accompanied by a 2018 Greene Foundation certificate.
Unitrade \$400



313

- 313 **** #41 1880 1c Violet Brown Prince of Wales**, mint with full original gum, never hinged, with large margins, very fine.
Unitrade \$400



314

- 314 **** #42 1890 1c Grey Brown Prince of Wales**, mint with full original gum, never hinged, well centered, very fine.
Unitrade \$400



- 315 **** #43 1896 1c Brown Prince of Wales**, a mint right margin horizontal pair, with full original gum, never hinged. A Very nice pair with its fresh and bright colour and great centering, very fine.
Unitrade \$1,200



- 316 **** #43 1896 1c Brown Prince of Wales with Printing Flaw**, mint with full original gum, never hinged. The stamp has a natural inclusion, still nicely centered and fresh, with deep colour and very fine.
Unitrade \$600



- 317 **** #43 1896 1c Brown Prince of Wales**, a mint right sheet margin single, with full original gum, never hinged. The stamp shows a plate imprint in margin along the whole length of the stamp, is very well centered and fresh, extremely fine. A lovely stamp in all respects.
Unitrade \$600



- 318 **** #44a 1891 1c Grey Green Prince of Wales on Yellowish Paper**, mint with full original gum, never hinged, well centered within large and even margins, fresh and extremely fine.
 Unitrade \$180



- 319 **** #45, 45a 1896 1c Green and Yellow Green Prince of Wales Issues**, both mint never hinged, the yellow green shade stamp is on yellowish paper. Both have very light gum blemishes, still very fine.
Unitrade \$330



- 320 **** #47, 48b 1887 and 1896 2c Orange and Green Codfish**, both mint with full original gum, never hinged, the green stamp has a natural gum skip and the orange stamp has light gum disturbance, still both very fine with fresh colour.
Unitrade \$780



- 321 **** #48b 1887 2c Orange Codfish**, a mint block of four, with full original gum, never hinged. A fresh block, the upper left stamp has a crease, else overall fine-very fine.
 Unitrade \$440



- 322 **** #51 1887 3c Umber Brown Queen Victoria**, mint with full original gum, never hinged, well centered and fresh, very fine.
Unitrade \$360



- 323 **** #54 1887 5c Dark Blue Harp Seal**, mint with full never hinged gum, never hinged. A lovely and fresh stamp with large margins, very fine.
Unitrade \$900



- 324 **** #55 1894 5c Bright Blue Harp Seal**, mint with full original gum, never hinged. A wonderful stamp in all respects, with its bright colour, lovely centering and freshness, extremely fine.
Unitrade \$300



- 325 ** #56a 1887 ½c Deep Rose Red Newfoundland Dog**, mint with full original gum, never hinged. A remarkable stamp with a large sheet margin at right, extreme freshness and well balanced margins, extremely fine. Catalogue value irrelevant.
..... **Est \$150**



- 326 ** #60 1890 3c Slate Queen Victoria**, mint with full original gum, never hinged and very well centered, fresh and extremely fine.
..... **Unitrade \$150**



- 327 ** #60a 1890 3c Grey Lilac Queen Victoria**, a mint upper marginal block of four, with full original gum, never hinged. Gum is slightly yellowed in a few places, still very fine.
..... **Unitrade \$600**



x328

- 328 E/P #61P/74P Discovery of Newfoundland Part Set of Plate Proofs**, all on card-mounted India paper, with a complete set minus the 12c and 24c values. Very fine.
..... **Unitrade \$600**

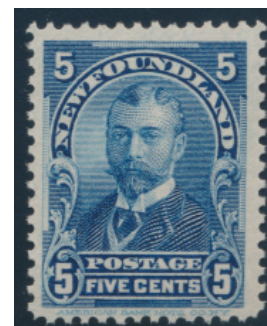


x329

- 329 ** #61-74 1897 1c to 60c Discovery of Newfoundland Set**, mint never hinged, all fresh and well centered, the 35c has a light bend, else very fine or better.
..... **Unitrade \$995**



x330



x331

- 330 E/P #62P/85P Group of Plate Proofs**, with #s 62P (pair on India), 63P (pair), 66P (pair), 73P, 74P (pair on India), 83P, 84P and 85P, all very fine on card-mounted India paper except where noted. Also includes (but not counted) is a defaced marginal pair of #111.
..... **Unitrade \$675**

- 331 ** #78-85 1897-1901 ½c to 5c Royal Family Set**, mint never hinged, fresh and very fine to extremely fine.
..... **Unitrade \$460**



x332



333



335

**** #87/97, 99 1910 1c to 15c John Guy Issue Lithographed Set**, mint never hinged, all fresh and very fine to extremely fine but the 8c is an engraved stamp. A gorgeous set.
..... **Unitrade \$2,147**

332 ** #78-85 1897-1901 ½c to 5c Royal Family Set, mint never hinged, the 5c has a slight bend at right, still fresh and very fine.
..... **Unitrade \$460**

333 ** #86 1908 2c Rose Carmine Map of Newfoundland, mint never hinged, with rich colour and large margins, extremely fine.
..... **Unitrade \$180**



334 ** #87, etc. 1910 1c Deep Green King James I, Perforated 12 x 11, a mint never hinged complete sheet of 100, with full selvage all around. A brief examination of the sheet revealed many printing varieties, both listed and unlisted, and so this sheet is ideal for any enthusiast of this issue, as many of the unlisted varieties we saw are quite prominent. The sheet has been folded in a few places horizontally, and the middle row has separation between two stamps at each end. There is also a bit of selvage separation which does not detract from the fresh and very fine attributes of this sheet. Catalogue value is for 100 very fine stamps, not counting any premiums for the varieties.
..... **Unitrade \$900**



336 ** #88 1910 2c Carmine Coat of Arms, Perforated 11.8 x 11.8, a complete mint never hinged sheet of 100, with full selvage all around. The sheet has been folded horizontally in a few places, which does not detract from its freshness and overall very fine stamps.
..... **Unitrade \$5,400**

Just a reminder that this sale is conducted in Canadian dollars and we charge an industry low 17% buyer's fee.





- 337 ** #92A 1910 6c Claret Lord Bacon, Type II, a mint never hinged (hinged in margin only) lower right corner single, fresh, well centered and extremely fine.
.....Unitrade \$240



x338

- 338 ** #98-103 1911 6c to 15c John Guy Engraved Set, mint never hinged, the 15c has very light gum disturbance, still all quite fresh and well centered, extremely fine.
.....Unitrade \$1,450



- 339 ** #100 1911 9c Olive Green Logging, Engraved, mint never hinged, well centered and extremely fine.
.....Unitrade \$250



- 340 ** #102 1911 12c Red brown King Edward VII, Engraved, mint never hinged, very fine.
.....Unitrade \$250

The Bytown Collection



x341

- 341 ** #104/114 var 1911 1c to 15c Royal Family Issue Part Set, Defaced, missing only the 3c value, all mint never hinged with one horizontal de la Rue defacing line (9c has two bars), overall fine.
.....Est \$200



- 342 ** #106 1911 3c Red Brown Prince of Wales, a mint never hinged lower marginal block of four, with centering cross in middle of selvage, fresh and very fine plus.
.....Unitrade \$500



- 343 ** #128, 130, 130iii 1920 Three different Surcharged Issues, all three mint never hinged, with #128, 130 and 130iii (raised E variety). Fresh and very fine to extremely fine trio.
.....Unitrade \$712



x344



x346

- 344 ** #131-144 1923-24 1c to 24c Pictorial Issue Set, mint never hinged, fresh and well centered, a very fine to extremely fine set.
.....Unitrade \$550



- 345 (*) #131b 1923 1c Grey Green Twin Hills, Tor's Cove Imperforate, an unused (no gum, as issued) horizontal pair, very fine.
.....Unitrade \$250

- 346 ** #145-159 1928 1c to 30c Pictorial Issue Set, Unwatermarked, mint never hinged, fresh and a very fine to extremely fine set.
.....Unitrade \$400



- 347 ** #160, 160iii 1929 3c on 6c Humber River Surcharge, a mint never hinged sheet of 25, showing the three "C of CENTS below T of THREE" varieties (in positions 1, 15 and 23). Also present is the major re-entry in position 16, and probably others, as listed on re-entries.com. Position 5 with black line at right and position 11 has printer's ink on back, else a very fine sheet. These were surcharged in blocks of 25 with all selvage removed, as presented here.
.....Unitrade \$564



x348

- 348 ** #163-171 1929-31 1c to 20c Pictorial Issue Set, mint never hinged, fresh and well centered, an extremely fine set.
.....Unitrade \$440



x349

- 349 ** #172-182 1928 1c to 30c Pictorial Issue Set, Watermarked, mint never hinged, fresh and an extremely fine set.
.....Unitrade \$600



x350

- 350 **/(*) #184c/193a Group of 6 1932-1937 Horizontal Imperforate Pairs, all mint never hinged, except where noted, with #s 184c, 186c, 189a (two distinct shades, one without gum), 191da (light wrinkles), 193a. A very fine group.
.....Unitrade \$772





- 351 **E/P #190P 5c Caribou Plate Proof in Black, Die I, Imperforate**, a Perkins Bacon horizontal pair printed on never hinged gummed watermarked stamp paper, very fine.
..... **Est \$150**



x352

- 352 **E/P #191P 5c Caribou Plate Proof Group, Die II**, all printed in colour of issue by Perkins Bacon, with two horizontal pairs (ungummed stamp paper, described by previous owner as plate 2) and a lighter shade horizontal pair on Moiré paper (described by previous owner as plate 3). Very fine.
..... **Est \$150**



- 353 **** #209a 1932 8c Orange Red Corner Brook Paper Mill Imperforate**, a mint never hinged vertical pair, very fine.
..... **Unitrade \$300**



x354

- 354 **** #212-225 1933 1c to 32c Sir Humphrey Gilbert Issue Extended Set**, includes the basic set, plus the 14c perf. 14 and the 15c with inverted watermark. All mint never hinged and fresh, very fine to extremely fine.
..... **Unitrade \$602**



x355

- 355 **** #217b/225b 1933 Sir Humphrey Gilbert Issue Group of Varieties**, including 5 values perforated 14, with the 7c (217b), 10c (220b), 14c (221b), 24c (224b) and 32c (225a), as well as the 15c value with inverted watermark (222i), all mint never hinged and fresh, very fine to extremely fine.
..... **Unitrade \$672**



- 356 **** #246a 1938 3c Dark Carmine Queen Elizabeth Imperforate**, a mint never hinged marginal horizontal pair, extremely fine.
..... **Unitrade \$300**



- 357 ** #255iv 1941 3c Rose Carmine Queen Elizabeth with Offset on Gum Side, a mint never hinged sheet margin horizontal pair, quite a striking variety, very fine.
.....Unitrade \$525



- 358 ** #256i 1941 4c Blue Princess Elizabeth, Watermarked and Unwatermarked, in a mint never hinged and fresh block of four, each horizontal pair has one stamp with and one without the watermark, very fine.
.....Unitrade \$600



- 359 ** #263i 1941 20c Green Cape Race with Complete Offset on Gum Side, mint never hinged and very fine.
.....Unitrade \$450



- 360 ** #270iii 1947 5c Rose Violet Cabot on the Matthew Imperforate with Security Punch, a mint never hinged block of four, very fine. A great item to represent Newfoundland's last issue in a collection.
.....Unitrade \$450



- 361 ** #C2ii 1919 \$1 on 15c Scarlet Alcock and Brown Flight Surcharge with Small Comma After POST, mint never hinged, fresh with bright colour, very fine. A lovely and scarce stamp.
.....Unitrade \$1,300



- 362 ** #C3b 1921 35c Halifax Airmail Overprint, with Period After 1921, mint never hinged, with bright colour, extremely fine and fresh.
.....Unitrade \$500



x363

- 363 ** #C6-C11 1931 15c to \$1 Pictorial Airmail Sets, Unwatermarked and Watermarked, all mint never hinged, fresh and very fine or better.
.....Unitrade \$700





- 364 ** #C12 1932 \$1.50 on \$1 Blue Dornier DO-X Flight Surchage, mint never hinged, very fresh and well centered among large even margins, light gum toning at one side, still very fine.
.....Unitrade \$800



x365

- 365 ** #C13-C17 1933 5c to 75c Labrador Issue Airmail Set, mint never hinged, fresh and very fine to extremely fine. A lovely set in all respects.
.....Unitrade \$455



- 366 ** #C18 1933 \$4.50 on 75c Bistre Balbo Flight Surchage, Perforated 14.3, mint never hinged, fresh and very fine.
.....Unitrade \$900



x367

- 367 ** #J1-J6 1939-49 1c to 10c Postage Due Set, with #s J1, J2a, J3, J4, J5 and J6, all in mint never hinged blocks of four, the 5c is in an upper left corner block of four, overall very fine.
.....Unitrade \$560



- 368 ** #NFR36 1942 5c Red Caribou Revenue, a mint never hinged sheet of 50, consisting of two panes of 25 separated by a center gutter. Full selvage all around, with each pane having the full printer's imprint at bottom, numbered "2" and "2a". A very fresh and seldom seen sheet. NFR36 1335

van Dam \$1,335





CANADIAN PHILATELY FROM ANOTHER POINT OF VIEW

JOIN THE CANADIAN PHILATELIC SOCIETY OF GREAT BRITAIN

Founded over 70 years ago to promote and study all aspects of philately in British North America (Canada and its Provinces), the Society offers its members:-

- A quarterly award-winning full colour magazine
- Auctions each year with many hundreds of lots
- An extensive library of published books and articles
- Website based exchange packet
- Subscriptions payable in local currency

For more information or membership details visit our website at www.canadianpsgb.org.uk or contact our Secretary, John Watson at Lyngarth, 106 Huddersfield Road, Penistone, South Yorkshire S36 7BX or by email at john.watson1949@btinternet.com

Our 2022 75th Anniversary Convention will be held in Dundee, Scotland from 28 September to 2 October.

www.canadianpsgb.org.uk



Canada's Philatelic Centre

VINCENT GRAVES GREENE PHILATELIC RESEARCH FOUNDATION

www.greenefoundation.ca



EXPERTIZATION

- ▶ Canada's Premier Expertizing Service for BNA stamps and Postal History
- ▶ Greene Foundation certificates are the accepted standard for BNA material
- ▶ Expertization certifies authenticity for collectors and dealers
- ▶ Latest technology used
- ▶ See Website for forms, fees and instructions

LIBRARY

- ▶ Canada's largest Philatelic Library open to collectors
- ▶ Extensive BNA research material
- ▶ Hours: 10am-4pm Monday to Thursday; One Saturday per month; Fourth Wednesday each month: 10am-7pm
- ▶ Librarian on site for assistance
- ▶ See Website for latest news



PUBLICATIONS

- ▶ The Foundation publishes scholarly books on BNA stamp issues and Postal History
- ▶ Recent books have full colour illustrations
- ▶ See Website for a full listing and prices
- ▶ Order books directly from the Greene Foundation or online through eBay

10 Summerhill Ave, Toronto, Ontario, Canada M4T 1A8 – Phone: 416-921-2073 – Email: info@greenefoundation.ca





SPARKS
★ AUCTIONS

THE RED BARON COLLECTION

SATURDAY, FEBRUARY 26th, 2022
approx. 2:00p.m. *

Lots #369-504

Lots

Semi-Official Airmails #CLP1-CLP7	369-373
Semi-Official Airmails #CL1-CL52	374-446
Semi Official Airmail Postal History	447-504

*** The Red Baron Collection will start immediately following The Bytown Collection at approximately 2:00p.m.**

Semi-Officials Airmails #CLP1-CLP7



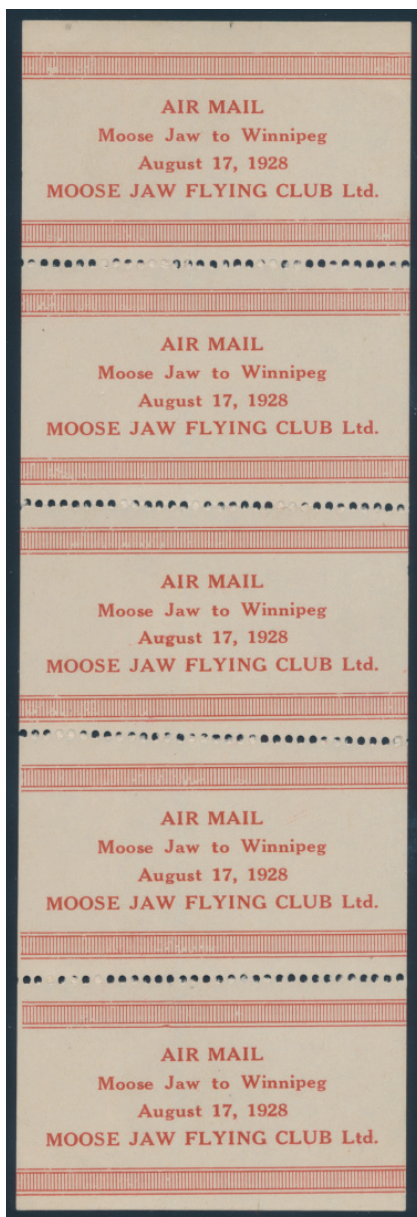
- 369 ** #CLP2 1918 25c Red and Black Aero Club of Canada on Smooth White Paper, a mint never hinged tête-bêche pair, a few negligible short perfs on one side, still a fresh and very fine item.
..... Unitrade \$3,500



- 370 ** #CLP2g 1918 25c Red and Black Aero Club of Canada on Rough Off-White Paper, mint never hinged, fresh and well centered, a very fine example of this scarcer paper variety.
..... Unitrade \$1,700



- 371 ** #CLP3b 1919 \$1 Red and Blue Aero Club of Canada, with "white space between sky and red background" variety on every stamp in a mint never hinged complete pane of 10. Fresh, with bright colour and quite rare, with only 3 sheets known to have survived with gum (unknown to us as to how many of those are never hinged). A great opportunity for the Semi-Official or sheet collector.
..... Unitrade \$9,625



- 372 */** #CLP7 1928 (\$1) Red on White Moose Jaw Flying Club, a complete vertical pane of five mint stamps, top and two bottom stamps are very lightly hinged (almost imperceptible), leaving stamps 2 and 3 never hinged. Quite fresh and extremely rare, with only 2 known to have survived. The owner, who had a strict "never hinged criteria" looked far and wide for a never hinged example and was told by several specialists that such a "unicorn" did not exist and that this was probably the "best one out there". A unique opportunity for the advanced Semi-Official collector, or seeker of the very rare.

Unitrade \$18,000

Semi-Official Airmails Scott #CL1-CL52



- 373 ** #CL1 1924 (25c) Light Green Laurentide Air Service, Rouletted at Left, a mint never hinged single, with booklet tab at left, quite fresh and extremely fine. Issued for the Rouyn to Halleybury (or return) flight on September 21, 1924. Rare in such high quality.

Unitrade \$4,000



- 374 ** #CL2 1924 (25c) Dark Green Laurentide Air Services Ltd. a mint never hinged booklet pane of two, with booklet selvedge, quite fresh and very fine.

Unitrade \$487



- 375 ** #CL2a 1924 (25c) Green Laurentide Air Service Ltd. Complete Booklet, with front cover printed in green, no printing on back. The booklet contains four panes of 2, each with inter-leaving between, fresh and very fine. A scarce booklet.

Unitrade \$2,000



- 376 **** #CL2b 1924 (25c) Green Laurentide Air Service Ltd. Complete Booklet**, with front cover printed in green, plus back cover printed with "Designed and printed by / Dodd-Simpson Press Ltd. Montreal". The booklet contains four panes of 2, each with inter-leaving between, fresh and very fine. A scarce booklet.
..... Unitrade \$2,000



- 377 **** #CL2d 1924 (25c) Green Laurentide Air Service Ltd. Complete Booklet**, with front cover printed in dark green, plus back cover printed with "Designed and printed by / Dodd-Simpson Press Ltd. Montreal". The booklet contains four panes of 2, each with inter-leaving between, fresh and very fine. A scarce booklet.
..... Unitrade \$2,400



- 378 **** #CL3 1924 (25c) Red Laurentide Air Service Ltd.** a mint never hinged single with sheet margin at right, a fresh and very fine stamp in all respects.
..... Unitrade \$225
- 379 **** #CL3 1924 (25c) Red Laurentide Air Service Ltd.** a mint never hinged complete pane of 20, fresh with bright colour and immaculate gum. The pane is missing its top right corner piece of selvage, has a contemporary pen notation in top selvage reading "4th Issue" and has light wrinkling at lower right, still a very fine and scarce pane, especially this nice. See image on facing page.
..... Unitrade \$4,500



- 380 **** #CL4a 1924 (25c) Red Laurentide Air Service Ltd. Complete Booklet**, with front cover printed in red, plus back cover printed with "Designed and printed by / Dodd-Simpson Press Ltd. Montreal". The booklet contains four panes of 2, each with inter-leaving between, fresh and very fine. A scarce booklet.
..... Unitrade \$3,000



- 381 **** #CL4b 1924 (25c) Red Laurentide Air Service Ltd. Complete Booklet**, with front cover printed in red, plus back cover printed with "Designed and printed by / Dodd-Simpson Press Ltd. Montreal". The booklet contains four panes of 2 with each pane showing a red at top and a light red stamp at bottom, complete with all inter-leaving between, fresh and very fine. A scarce booklet.
..... Unitrade \$3,000



- 382 **** #CL4b 1924 (25c) Red Laurentide Air Service Ltd. Complete Exploded Booklet**, with front cover printed in red, plus back cover printed with "Designed and printed by / Dodd-Simpson Press Ltd. Montreal". The separated booklet contains four panes of 2, with each pane showing a red at top and a light red stamp at bottom, complete with all inter-leaving between, very fine.
..... Unitrade \$3,000



Lot 379



Lot 383

- 383 ** #CL5, 5b 1925 (25c) Blue Northern Air Services with Dot at Left of Monogram Variety, a mint never hinged tête-bêche booklet pane of four with selvage at each end, showing the "dot at left of monogram" on one of the outer stamps. The other outer stamp shows a light fingerprint on the gum, still a very fine and seldom offered pane. See image above.
.....Unitrade \$1,875



- 384 ** #CL5b 1925 (25c) Blue Northern Air Services with Dot at Left of Monogram Variety, a mint never hinged, well centered and very fine.
.....Unitrade \$375



- 385 ** #CL6, CL7 1926 (25c) Red Jack V. Elliot Air Service, the two stamps, each with a different background, both mint never hinged, fresh and very fine.
.....Unitrade \$270



- 386 ** #CL7c 1926 (25c) Red Jack V. Elliot Air Service, a mint never hinged tête-bêche gutter pair, with sheet selvage at one side, quite fresh and very fine. A seldom offered item, especially this nice.
.....Unitrade \$1,300



- 387 ** #CL8 1926 (25c) Red on Yellow Elliot-Fairchild Air Service, a mint never hinged complete pane of 8, with full selvage all around, remarkably fresh and extremely fine.
.....Unitrade \$675



x388

- 388 ** #CL8, 8c 1926 (25c) Red on Yellow Elliot-Fairchild Air Service, a group of six mint never hinged stamps, including four singles from all four corners of the pane, the upper right one with tall "r" variety, plus a vertical pair with margin at top and bottom, with top stamp showing the tall "r" variety. All are fresh and very fine.
.....Unitrade \$510



x389

- 389 ** #CL9, 9c 1926 (25c) Blue on Yellow Elliot-Fairchild Air Service, two mint never hinged singles with margins, the upper left corner single (position 1) showing the "filled-in wing" variety. Fresh and very fine.
.....Unitrade \$210



- 390 ** #CL9d 1926 (25c) Blue on Yellow Elliot-Fairchild Air Service, a mint never hinged complete pane of 8, with the upper right corner stamp inverted, fresh and very fine.
.....Unitrade \$525



- 391 ** #CL10, 10b 1926 (25c) Red Elliot-Fairchild Air Transport Ltd. two mint never hinged singles, one from position 5 of the pane and one from position 4 showing the "white dot over O of Elliot" variety. Very fine.
.....Unitrade \$262



- 392 ** #CL10b 1926 (25c) Red Elliot-Fairchild Air Transport Ltd. a complete mint never hinged vertical pane of 5, with 4th stamp showing the "white dot over o of Elliott" variety, fresh with bright colour and extremely fine.
.....Unitrade \$600





- 393 ** #CL11 1926 (25c) Deep Blue Fairchild Air Transport Ltd. a mint never hinged complete pane of 10, with second and 4th rows inverted, quite fresh with a bit of separation between two stamps, very fine.

.....Unitrade \$750



- 394 ** #CL11a, 12a 1926 (25c) Deep Blue and Ultramarine Fairchild Air Transport Ltd. both in mint never hinged tête-bêche pairs, one vertical and one horizontal, very fine.

.....Unitrade \$330



- 395 ** #CL12 1926 (25c) Ultramarine Fairchild Air Transport Ltd. a mint never hinged complete pane of 10, with all stamps in column 2 inverted, quite fresh with a bit of separation between two stamps, very fine.

.....Unitrade \$850



x396

- 396 ** #CL13TCP 1926 (25c) Patricia Airways "Style One" Set of Four Trial Colour Proofs, all perforated on gummed canary, buff, green and deep blue paper, all four singles coming from the same position of the sheet (each showing "LAKE" in margin at right), mint never hinged, with a very light gum blemish on the buff paper, a very fine and scarce set.

.....Unitrade \$2,100



- 397 ** #CL13TCP 1926 (25c) Patricia Airways "Style One" Set of Four Trial Colour Proofs, all perforated on gummed canary, buff, green and deep blue paper, all four singles coming from the same position of the sheet (each showing "RED" in margin at right), mint never hinged, with a very light gum blemish on the deep blue paper, a very fine and scarce set.

Unitrade \$2,100



x398

- 398 ** #CL14, 14a 1926 Patricia Airways "Style One" with Type A 10c Overprint in Red, with Route Inscription in Green and Blue-Black, each stamp is mint never hinged, the normal green overprint is an upper margin single and the blue-black variety is an upper left corner single (with pencil number in margin), both are very fine.

Unitrade \$1,350



- 399 ** #CL15 1926 Patricia Airways "Style One" with Type B 5c Overprint Ascending in Black, mint never hinged, with bright colour, fresh and very fine.

Unitrade \$412



- 400 ** #CL15 1926 Patricia Airways "Style One" with Type B 5c Overprint Ascending in Black, mint never hinged lower sheet margin single, with bright colour, fresh and very fine.

Unitrade \$412



- 401 ** #CL15c 1926 Patricia Airways "Style One" with Type B 5c Overprint Descending in Red, a mint never hinged left sheet margin single, fresh and very fine.

Unitrade \$1,125



- 402 ** #CL15c 1926 Patricia Airways "Style One" with Type B 5c Overprint Descending in Red, a mint never hinged upper right corner single, fresh and very fine.

Unitrade \$1,125



- 403 ** #CL15c, 15d 1926 Patricia Airways "Style One" with Type B 5c Overprint Descending in Red, with Malformed "o" of Lookout Variety, a mint never hinged horizontal pair from bottom of sheet, with the left stamp (pos. 7) showing the variety. An ideal piece, showing plate 1 inscription in margin, fresh, very fine and quite scarce.

Unitrade \$2,625



- 404 ** #CL16 1926 Patricia Airways "Style One" with Type D (5c) Overprint Descending in Black, a mint never hinged right sheet margin single, fresh and very fine.
..... Unitrade \$2,250



- 405 ** #CL16 1926 Patricia Airways "Style One" with Type D (5c) Overprint Descending in Black, a mint never hinged single, fresh and very fine.
..... Unitrade \$2,250



- 406 ** #CL18 1926 (50c) Patricia Airways "Style Two" without Overprint, a mint never hinged upper right corner single, fresh and very fine.
..... Unitrade \$300



- 407 ** #CL18 1926 (50c) Patricia Airways "Style Two" without Overprint, two mint never hinged singles, one from the left and one from the right of the pane, fresh and very fine.
..... Unitrade \$600



- 408 ** #CL18e 1926 (50c) Patricia Airways "Style Two" without Overprint, with "FED" Handstamp in Green, a mint never hinged upper right corner single, fresh and very fine. The "FED" initials are for F.E. Davidson, the financier for Patricia Airways. A rare stamp, especially in this pristine and positional condition, as most were used on mail.
..... Unitrade \$3,750



- 409 ** #CL18f 1926 (50c) Patricia Airways "Style Two" without Overprint, with "FED" Handstamp in Green and with "OTT" in Lookout Variety, a mint never hinged right sheet margin single, fresh and very fine. The "FED" initials stand for F.E. Davidson, the financier for Patricia Airways. A very rare stamp, probably missing from most collections, as the wonderful combination of its condition and variety are almost never encountered. Most of the small number overprinted FED were used on private mail and few remained unused.
..... Unitrade \$4,275



- 410 ** #CL19 1927 Patricia Airways "Style Two" with 10c Ascending Type A Overprint in Red, mint never hinged, fresh and very fine.
..... Unitrade \$525



- 411 ** #CL19 var 1927 Patricia Airways "Style Two" with 10c Ascending Type A Overprint in Red and "Small v" Variety, mint never hinged, showing the "Small v in vIA" variety, fresh and very fine. Unlisted in Unitrade, catalogue value is for regular stamp only.
..... Unitrade \$525



- 412 ** #CL20 1927 Patricia Airways "Style Two" with 5c Ascending Type B Overprint in Black, mint never hinged, from left of pane, fresh and very fine. A scarce stamp, especially in such nice condition.
..... Unitrade \$1,875



- 413 ** #CL20b 1927 Patricia Airways "Style Two" with 5c Ascending Type B Overprint in Red, a mint never hinged lower right corner single, fresh and very fine. A scarce stamp, especially in such nice condition.
..... Unitrade \$1,875



- 414 ** #CL20b 1927 Patricia Airways "Style Two" with 5c Ascending Type B Overprint in Red, mint never hinged, fresh and very fine. Trivial fingerprint on gum, still a lovely stamp in all respects.
..... Unitrade \$1,875



- 415 ** #CL20 var 1927 Patricia Airways "Style Two" with 5c Ascending Type B Overprint in Black, with unlisted (for this stamp) "small v in VIA" variety, mint never hinged, from top right of pane, fresh and very fine. A scarce stamp, especially in such lovely condition, with this variety occurring only once in every pane. Catalogue value is for a regular stamp only.
..... Unitrade \$1,875



- 416 ** #CL21a 1927 Patricia Airways "Style Two" with (5c) Ascending Type D Overprint in Violet, mint never hinged, fresh and very fine. A rare stamp, especially in such pristine condition, and in our estimate under-valued as never hinged.
..... Unitrade \$5,250



- 417 ** #CL22a 1927 Patricia Airways "Style Two" with 10c Ascending Type A Overprint in Red and Descending Type D Overprint in Black, mint never hinged, fresh and very fine. A scarce stamp, especially in such lovely condition, and in our opinion under-valued as never hinged.
..... Unitrade \$5,250



- 418 ** #CL23 1927 Patricia Airways "Style Three" Rouletted, Without Overprint, mint never hinged, fresh and very fine. A scarce unissued stamp, especially in never hinged condition.
..... Unitrade \$1,312

Proud partner sponsor of





- 419 ** #CL24 1927 Patricia Airways "Style Three" Rouletted with 10c Ascending Type A Overprint, a mint never hinged lower left corner single from plate 8, light hinge mark on the bottom selvage for the record, fresh and very fine.
..... Unitrade \$180



- 420 ** #CL25, 25a, 25b 1927 Patricia Airways "Style Three" Rouletted with 5c Descending Type B Overprint in Black, Red and Green, offered in three mint never hinged right sheet margin singles (all from the same position), very fine and a lovely trio.
..... Unitrade \$210



- 421 ** #CL25, 25f 1927 Patricia Airways "Style Three" Rouletted with 5c Descending Type B Overprint in Black and Malformed "o" in Lookout, a mint never hinged lower sheet margin pair, with left stamp (position 7) showing the variety. A lovely pair, showing the plate 15 inscription, very fine in all respects and quite fresh.
..... Unitrade \$765



- 422 ** #CL25a, 25d 1927 Patricia Airways "Style Three" Rouletted with 5c Descending Type B Overprint in Red and Malformed "o" in Lookout, a mint never hinged lower sheet margin pair, with left stamp (position 7) showing the variety. A lovely pair, lightly hinged in margin only, also showing the plate 14 inscription, very fine and quite fresh.
..... Unitrade \$765



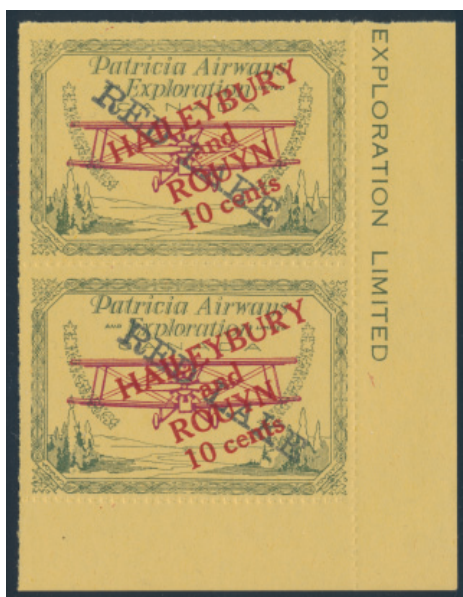
- 423 ** #CL25b, 25e 1927 Patricia Airways "Style Three" Rouletted with 5c Descending Type B Overprint in Green and Malformed "o" in Lookout, a mint never hinged lower sheet margin pair (lightly hinged in margin only), with left stamp (position 7) showing the variety. A lovely pair, showing the plate 13 inscription, with a light crease in left margin, very fine and quite fresh.
..... Unitrade \$765



- 424 ** #CL26, 26c, 26e 1927 Patricia Airways "Style Three" Rouletted with 5c Ascending Type C Overprint in Black, Red and Green, offered in three mint never hinged left sheet margin singles (all from the same position), very fine and a lovely trio.
..... Unitrade \$547



- 425 ** #CL27 1927 Patricia Airways "Style Three" Rouletted with 10c Ascending Type A Overprint in Red and 5c Descending Type C, 34 mm Overprint in Black, a mint never hinged (lightly hinged in margin only) upper left corner single, with plate 6 inscription, very fine.
.....Unitrade \$225



- 426 ** #CL29 1927 Patricia Airways "Style Three" Rouletted with 10c Ascending Type A Overprint in Red and Descending Type D Overprint in Black, a mint never hinged upper right corner vertical pair, very fine and fresh.
.....Unitrade \$750



- 427 ** #CL29a 1927 Patricia Airways "Style Three" Rouletted with 10c Ascending Type A Overprint in Red and Descending Type D Overprint in Purple, a mint never hinged upper right corner single, very fine and fresh.
.....Unitrade \$375



- 428 ** #CL29b 1927 Patricia Airways "Style Three" Rouletted with 10c Ascending Type A Overprint in Red and Descending Type D Overprint in Green, a mint never hinged right pane margin single, very fine and fresh.
.....Unitrade \$375



x429

- 429 ** #CL30, 30c, 30f 1927 Patricia Airways "Style Three" Rouletted with (5c) Type D Overprint in Black, Purple and Green, a group of six different mint never hinged left sheet margin singles, with all three colours each with a regular and an inverted overprint. A few are lightly hinged in the margin only, which does not detract from this being a very fine and fresh group.
.....Unitrade \$705



- 430 ** #CL30f 1927 Patricia Airways "Style Three" Rouletted with (5c) Type D Overprint in Green, two mint never hinged lower left corner vertical pairs, one pair with descending overprints, the other with inverted overprints. Both pairs are lightly hinged in the margin only, very fine.
.....Unitrade \$450

SPARKS
★ AUCTIONS

We are always seeking nice material for our sales. Contact Stéphane to discuss your consignments to our future auctions.

stephane@sparks-auctions.com





- 431 **** #CL40 1927 (10c) Black with Pink Background Western Canada Airway Service**, a mint never hinged complete pane of 50, with full selvage all around, showing the "ONE OZ. TEN CENTS" imprints at top and bottom. Remarkably fresh and very fine, the first we've offered.

.....Unitrade \$525



- 432 **** #CL41 1927 (10c) Black with Orange Background Western Canada Airway Service**, a mint never hinged complete pane of 50, with full selvage all around, showing the "ONE OZ. TEN CENTS" imprints at top and bottom. Remarkably fresh and very fine, the first we've offered.

.....Unitrade \$1,200



- 433 **** #CL42 1927 25c Blue Yukon Airways and Exploration Co. Ltd.**, a mint never hinged full vertical pane of 10, with selvage at top, with bright colour, and only a tiny stain at left of 9th stamp, else fresh and very fine.

.....Unitrade \$750



- 434 **** #CL43Pi 1928 (10c) Patricia Airways Limited Rouletted Plate Proof with "Grounded Airplane" Variety**, a mint never hinged right pane margin single, very fine and fresh.

.....Unitrade \$1,487





- 435 ** #CL43 1928 (10c) Patricia Airways Limited Issue, a mint never hinged complete pane of 8 from plate 9, remarkably fresh, with bright colours, extremely fine.

.....Unitrade \$562



- 436 ** #CL43 var 1928 (10c) Patricia Airways Limited Issue with Unlisted Variety, a mint never hinged complete pane of 8 from plate 1, showing plum coloured airplanes (as opposed to red). A remarkably distinct shade difference which should be listed at a premium, and probably scarce, as the recent major semi-official offerings we checked did not include any. Quite fresh, with bright colours, extremely fine.

.....Est \$250



- 437 ** #CL44 1928 5c Ultramarine British Columbia Airways Ltd., a mint never hinged complete pane of 55, never folded, with slight separation between two stamps at right, very fine, fresh and scarce.

.....Unitrade \$687



- 438 ** #CL46, 46a 1929 10c Red and Black Cherry Red Airline Ltd., a mint never hinged complete pane of 50, from the second printing, showing the "serif on crossbar of A of AIR" in positions 8, 10, 33 and 35. A lovely and fresh pane, with bright colours and very fine.

.....Unitrade \$750



- 439 **** #CL47 1929 (10c) Black Commercial Airways Ltd. with VIA AIR**, mint never hinged, with perforations all around, extremely fine and fresh.
Unitrade \$240



- 440 **** #CL47a, 47c 1929 (10c) Black Commercial Airways Ltd. with VIA AIR**, a mint never hinged complete pane of 10, with both perforated margins (rate and record number) still attached at left and showing the "broken c in commercial" variety in position 2. A lovely pane in all respects, quite fresh and very fine.
Unitrade \$2,625



Scans of all lots can
 be found online at
StampAuctionNetwork.com

Want more scans of a lot?
 Email us at info@sparks-auctions.com



x441

- 441 **** #CL48, 48a, 48d 1929 (10c) Black and Deep Black Commercial Airways Ltd. with AIR FEE**, a mint never hinged complete pane of 10 of each shade (one on thin, and one on thick paper), each with pane margin at left, both showing the "break in oval" variety in position 1, very fine and fresh.
Unitrade \$500



- 442 **** #CL49, 49a 1929 (10c) Purple Commercial Airways Ltd. with VIA AIR**, a mint never hinged complete pane of 10, with pane margin at left, showing the "broken c in cial" plate variety on upper right stamp, very fine and fresh.
Unitrade \$2,187



- 443 **** #CL49 1929 (10c) Purple Commercial Airways Ltd. with VIA AIR**, mint never hinged, with perforations all around and pane margin at left, very fine and fresh.
Unitrade \$218



- 444 **** #CL50, 50d 1929 (10c) Orange Commercial Airways Ltd. with AIR FEE**, a mint never hinged complete pane of 10, with pane margin at left, showing the "break in oval" variety in position 1, fine-very fine and fresh.
Unitrade \$250



- 445 **** #CL52 1932 Orange and Blue Canadian Airways Ltd. with 10c Surcharge**, a mint never hinged complete pane of 50, with a few small separations, fresh and very fine.
Unitrade \$1,562




x446

- 446 **** #CL3/CL53 Quality Collection of Semi-Official Airmail Issues**, with 38 different mint never hinged singles, all fresh and very fine, with #s CL3, 7, 8, 10, 10b, 11, 11a, 12a, 13, 14, 15, 18, 24, 25, 25a, 25b, 26, 26c, 26e, 29, 29a, 30, 30c, 30f, 40, 41, 42, 43, 44, 45, 46, 46a, 46i, 47, 48, 49, 50 and 52. A superior quality collection, with many items having sheet margins.
Unitrade \$5,097




Semi Official Airmail Postal History



- 447  **#CLP1 1918 (25c) Aero Club of Canada Semi-Official on Cover Toronto to Ottawa**, franked with a strip of three 1c green Admirals on front, plus a CLP1 on back, the latter just tied by large "by / Aeroplane / AUG.26.1918 / Ottawa, Canada" flight cachet in green. The front of the cover also shows an "AERIAL MAIL / AUG 26 1918 / Toronto, Canada" boxed cachet in violet, and no other readable postal markings. Opening tears at top, still a rare cover, with very few items (35) flown.


..... Unitrade \$4,500



- 448  **#CLP3 Aug. 25, 1919 Toronto to New York First Flight Cover with CLP3**, franked on front by a 3c brown Admiral tied by a AUG.25.1919 CNE Exhibition slogan to New York (endorsed "via Air Post"). Back is franked with a very fine CLP3, tied by a boxed "AERIAL MAIL / AUG 25 1919 / TORONTO, CANADA" cachet in blue, very fine. Only a small amount of mail was carried on that flight by pilot Colonel W.G. Barker, VC. AAMS #PF18. An overall very fine and clean cover.

..... Unitrade \$925




- 449  **#CLP5i Oct 1, 1924 Estevan to Winnipeg Pioneer Flight Cover**, with CLP5 (with wide spacing "ew"), tied by an "Via Aeroplane / Estevan, Sask / Oct 1st, 1924" oval cancel in purple, same ties a 1c and a 2c Admirals (cpl. perf faults), and there is a third free strike on front. Winnipeg same day slogan receiver on back, alongside all-over business advertising. Very fine in all respects.

..... Unitrade \$300



x450

- 450  **#CL2c, CL3 Two Different Larder Lake to Rouyn First Winter Flight Covers**, both #10 size covers, first has a dark green third issue semi-official on back, tied by a large purple oval "Laurentide Air Service / Ltd. / Air Mail / Larder Lake, Rouyn / First Winter Flight / 1924". The stamp is postmarked Larder Lake JAN 22 / 25. The second is franked with a CL3 (faulty) with same combination of cachet and post office datestamp. An overall fine pair of covers.


..... Est \$150



- 451  **#CL3 1924 Rouyn to Halleybury Pilot Signed Flight Cover**, franked on back with a CL3, postmarked Rouyn Lake Oct 28 1924. The front shows a 3c Admiral franking, addressed to Springfield, Mass and has a neat "Via / Aeroplane Mail" winged handstamp. The back also shows the signature of the flight's pilot, very fine.


..... Unitrade \$375



452  **#CL4 1924 Rouyn to Halleybury Pilot Signed Flight Cover**, franked on back with a CL4, postmarked Rouyn Lake Oct 23 1924. The front of this 3c stationery cover is postmarked Rouyn Lake on same day, and is addressed to Toronto. slight edge wear, still very fine.


Unitrade \$375

x453

453  **#CL5 June 27-29, 1925 Northern Air Service First Flight Covers with CL5,** both are 3c Admiral covers one mailed Haileybury to Rouyn and the other Rouyn to Haileybury, both are franked with a 25c blue Northern Air Service semi-official stamp on back, with despatch and receiver datestamps, one is pilot signed, very fine.

Unitrade \$350


x454

454  **#CL6, CL7, CL8 Three 1926 Flight Covers with CL6, CL7 and CL8 Semi Official Airmail Issues**, CL6 is on back of a 3c Admiral cover, tied by Kenora MAR 6 1926 cachet in blue and Jack V. Elliot / First Flight / Red Lake to Hudson cachet in red, also tied by Rolling Port MAR.10.1926 postmark. CL7 is on back of a cover franked with an imperforate pair of 3c Admirals, semi is postmarked Red Lake APR.13.26, and there is a free strike of Rolling Portage APR.14.26. CL8 is on back of a philatelic cover addressed to a stamp dealer in Montreal, and is tied by a Rouyn SEP.30.26 c.d.s. (plus other free strikes). All three covers are clean and very fine.

... Est \$150




x455

455  **#CL9, CL10, CL11 Group of 4 Covers Franked with CL9 to CL11**, CL9 is on back of a 2c Admiral cover to a stamp dealer in Montreal, tied by a Rouyn AUG.2.1926 c.d.s. CL10 is on back of a 2c Admiral cover to Montreal, tied by a AUG.12.1926 c.d.s., also signed by the pilot. Two covers are franked with the CL11, tied by Rouyn and Halleybury c.d.s. OCT.20.1926, both pilot signed on cachets, one Rouyn to Halleybury and one Halleybury to Rouyn. All 4 covers are very fine.

Unitrade \$630




x456

456  **#CL13 Group of Four Covers Franked with CL13**, two have “Via Air Mail / DEC.18.1926 / Toronto To / Red Lake” cachet on front, and corner sheet margin CL13 stamps tied by Red Lake DEC.19.1926 datestamps. The two other covers each have their CL13s tied by a green Maple Leaf flight cachet, plus a Sioux Lookout and Red Lake datestamp on JUL.7.1926. All 4 covers are very fine, each side scanned online.

...Unitrade \$400



457  **#CL13b 1926 First Flight Cover Franked with a CL13 with "Small t in TO" Variety**, the very fine stamp is tied on back of cover by green Maple Leaf cachet and Red Lake datestamp on JUL.7.1926. Front has a 2c green Admiral tied by a Sioux Lookout duplex of same date, alongside a free strike of the green cachet. A very fine and scarce cover.

Unitrade \$750



- 458 ☒ #CL13e 1926 Patricia Airways Cover with "FED" Handstamp in red on CL13 stamp. A Patricia Airways corner card cover flown from Toronto to Red Lake on DEC.18.1926 (with flight cachet handstamp on front and back). Back of cover shows a map of the flight path and is franked with a CL13e, tied by Red Lake postmark dated DEC.20. The red FED signature handstamp on the stamp is from F.E. Davidson, the company's financier. A rarely offered cover, very fine.
Unitrade \$1,850



- 459 ☒ #CL14 Dec. 12 1927 First Flight Cover Franked with CL14 on Front, tied by Rouyn c.d.s. and addressed to RS Mason in Rouyn, franked with a 1c orange Confederation issue tied by a Richmond Hill duplex of OCT.31.1927. Back has a Rouyn NOV.7.1927 c.d.s. A very fine and pretty cover.
Unitrade \$325



- 460 ☒ #CL14 May 23 1927 First Flight Cover Franked with CL14, on back, tied by Rouyn c.d.s. two 1c orange yellow Admirals are tied by the same c.d.s. of the same day, addressed to stamp dealer in Montreal. Very fine.
Unitrade \$325



- 461 ☒ #CL14 June 30 1927 First Flight Cover Franked with CL14, on back, tied by Rouyn c.d.s. the 2c green Admiral is tied by the same c.d.s. of the same day, addressed to Toronto, with envelope glue stains on back, else very fine.
Unitrade \$325



- 462 ☒ #CL14 var Apr. 9 1927 First Flight Cover with CL13 with Very Dark Red Overprint, an unlisted variety in Unitrade, and the first we have seen. This shade of red is similar to the listed "dark red" overprint on CL19b. Very fine and rare.
Est \$250



- 463 ☒ #CL15 March 9 1928 First Flight Cover Franked with CL15, on back, tied by Red Lake datestamp. Two 1c orange Confederation issues are tied by Sioux Lookout duplex of the same day, addressed to Muscatine Iowa, very fine.
Unitrade \$375



- 464 **#CL15c March 9 1928 First Flight Cover Franked with CL15c**, the descending overprint in red variety, on back, tied by a Sioux Lookout c.d.s. 2c green Admiral in front is tied by Red Lake datestamp of the same day, addressed to Mr. Smith of the Patricia Airways and Exploration Ltd., in Sioux Lookout, very fine and scarce on cover.
.....Unitrade \$650



- 465 **#CL15d March 15 1928 First Flight Cover Franked with CL15d**, the descending overprint in red, with "malformed o of Lookout" variety, ideally on front of cover, tied by a Jackson Manion datestamp. Two 1c orange Confederation issues are tied by the same datestamp dated the same day, and there is a Sioux Lookout c.d.s. on back dated March 16. Very fine and exceedingly rare on cover.
.....Unitrade \$1,000



x466

- 466 **#CL18 August 2 1926 Two Different First Flight Covers Franked with CL18**, both on back, both tied by green Maple Leaf flight cachet plus Woman Lake and Birch Lake Aug.2.1926 datestamps. 2c green Admiral stamps are tied by Toronto slogan cancels JUL.24.1926. One with a red Maple Leaf cachet on front is addressed to Woman Lake and the other with a green cachet is addressed to Birch Lake. Both very fine.
.....Unitrade \$600



- 467 **#CL18, 18c July 24 1926 Flown Cover Franked with Two CL18 stamps, one with the "OTT" Variety**, franked with a 2c green Admiral plus a CL18, both tied to front of cover by a JUL.24.1926 Toronto slogan cancel, alongside a blue-green Maple Leaf cachet for the flight. The back of the cover has a second CL18, but with the rare "OTT" instead of "OUT" variety (CL18c, \$750 on cover), tied by an AUG.2 Woman Lake c.d.s., alongside a JUL.26 Sioux Lookout c.d.s. The cover has an Anglo European Import & Export Co. Toronto corner card. A rare cover, not only for its double CL18 franking, but for the variety on the second stamp.
..... Est \$500



- 468 **#CL18e 1926 Woman Lake to Sioux Lookout Cover with "Fed" in Green on CL18**, a Patricia Airways & Exploration Ltd. corner card cover with large flight map illustration on back, franked with a 2c green Admiral on front and a CL18e on back, tied by an AUG.2.1926 Sioux Lookout c.d.s. Green Maple Leaf flight cachet on front, very fine and scarce. AAMC CL18e-2600a. Both sides scanned online.
..... Unitrade \$2,500



- 469 **#CL18e 1926 Sioux Lookout to Birch Lake Cover with "Fed" in Green on CL18 with Variety**, a Patricia Airways & Exploration Ltd. corner card cover, franked with a 2c green Admiral on front and a CL18e on back, showing the still unlisted "Small v in Via" variety, tied by an AUG.2.1926 Birch Lake c.d.s. and a Green Maple Leaf flight cachet, with another strike on front, very fine and scarce. AAMC CL18e-2600a. Both sides scanned online.
..... Unitrade \$2,500
..... The Red Baron Collection





x470

- 470 ☒ **#CL18 var August 2 1926 Two Interesting First Flight Covers Franked with CL18**, both franked on back, first with the still unvalued (on cover) "Small v of VIA" variety is tied by Sioux Lookout Aug.2 c.d.s. and Claraday Aug.4 datestamp and Birch Lake Aug.2 c.d.s. plus large part of the stamp selvage showing the interesting change of value (\$2 overprinted \$4). Front has a map of the flight route Sioux Lookout to Red Lake. Second cover has a corner stamp showing the same value change (\$2 overprinted \$4) plus Sioux Lookout and Woman Lake c.d.s.'s, plus a green Maple Leaf flight cachet on front. See scans of all four sides online.

Unitrade \$600



- 471 ☒ **#CL19 1927 Haileybury to Rouyn Cover Franked with CL19**, mailed at Richmond Hill on JUN.17.1927 (c.d.s. tying a pair of 1c orange yellow Admirals), with Haileybury JUN.21 c.d.s. on back and Rouyn JUN.23 receiver both on back, and tying the CL19 (with red overprint) to the front of the cover. Very fine and scarce.

Unitrade \$900



- 472 ☒ **#CL19b 1927 Haileybury to Rouyn Cover Franked with CL19b**, mailed at Richmond Hill on JUN.17.1927 (c.d.s. tying a pair of 1c orange yellow Admirals), with Haileybury JUN.21 c.d.s. on back and Rouyn JUN.23 receiver both on back, and tying the CL19 (with dark red overprint) to the front of the cover. Very fine and scarce.

Unitrade \$900



- 473 ☒ **#CL20 March 9 1928 Patricia Airways Ltd. Cover Franked with CL20**, on back, postmarked Sioux Lookout MAR.9.1928, mailed at Red Lake on same day (datestamp tying 2c green Admiral on front). Admiral stamp with slight toning, else very fine. AAMC #CL20-2800. A scarce cover.

Unitrade \$1,000



- 474 ☒ **#CL21a June 8 1927 Red Lake to Sioux Lookout Cover Franked with CL21a**, on back (with Type D overprint ascending in violet), mailed at Red Lake on JUN.8.1927 (datestamp tying 2c green Admiral on front), with Sioux Lookout receiver on back. A rare cover, as only 16 stamps were printed with this overprint, and probably not many were used on cover. Very fine.

Unitrade \$4,000



- 475 ☒ **#CL22a Sept. 13 1927 Red Lake to Sioux Lookout Cover with CL22a**, on back (with descending Type D overprint in black), postmarked Sioux Lookout SEP.17.1927, mailed at Red Lake on SEP.13 (datestamp tying 2c green Admiral on front). Very fine and very rare, with only 24 of these stamps printed and probably very few used on cover.

Unitrade \$3,500



- 476 **#CL25 March 9 1928 Red Lake to Sioux Lookout Cover with CL25f**, on back (with third o of Lookout malformed), tied by Sioux Lookout MAR.9.1928 c.d.s., mailed at Red Lake on same day (datestamp tying 2c green Admiral on front). Very fine and a rare variety on cover.

.....Unitrade \$500



- 479 **#CL25d March 9 1928 Red Lake to Sioux Lookout Cover with CL25d**, on back (with third o of Lookout malformed), postmarked Sioux Lookout MAR.9.1928, mailed at Red Lake on same day (datestamp tying 2c green Admiral on front). Very fine and a rare variety on cover.

.....Unitrade \$500



x477

- 477 **#CL25, 25a, 25b, 25c Group of Four Covers Franked with Four Different CL25 Stamps**, CL25 (descending in black) dated MAR.9.1928, Sioux Lookout to Gold Pines. CL25a (descending in red) cover dated MAR.1.1928 Sioux Lookout to Gold Pines. CL25b (descending in green) dated MAR.9.1928 Sioux Lookout to Red Lake. CL25c (ascending in green) dated JUN.25.1927 Gold Pines to Sioux Lookout. A very fine trio of different routes and frankings.

.....Unitrade \$700



- 478 **#CL25c July 1 1927 Red Lake to Sioux Lookout Cover with CL25c**, on front (ascending overprint in green), tied Red Lake JUL.1.1927, with another strike tying a 2c green Admiral and a 12c Confederation issue, mailed to Roessler in New Jersey, very fine.

.....Unitrade \$175



x480

- 480 **#CL26 Two Different March 9, 1928 Covers Franked with CL26**, both on back, one tied by Sioux Lookout (from Gold Pines same day), second is tied by Jackson Manion (from Red Lake). Very fine.

.....Unitrade \$450



- 481 **#CL26c March 9 1928 Red Lake to Sioux Lookout Cover with CL26c**, on back (overprint in red), postmarked Sioux Lookout MAR.9.1928, mailed at Red Lake on same day (datestamp tying 2c green Admiral on front). Very fine.

.....Unitrade \$275



x482

- 482 ☒ **#CL26e Two Different March 9 1928 Covers Franked with CL26e**, both franked on back (with overprint in green), one is from Red Lake to Jackson Manion and the other from Gold Pines to Sioux Lookout, both are very fine.
.....Unitrade \$450



- 483 ☒ **#CL27 Sept. 17 1927 Red Lake to Sioux Lookout Cover with CL27**, on back, postmarked Sioux Lookout SEP.17.1927 c.d.s., mailed at Red Lake on SEP.13 (datestamp tying 2c green Admiral on front). Very fine.
.....Unitrade \$450



- 484 ☒ **#CL27 1928 Red Pines to Sioux Lookout Cover with CL27**, on front of cover, tied by Red Pines datestamp (illegible date, stamp has very light soiling at edges), with FEB.11.1928 Sioux Lookout c.d.s. on back, also franked on front with a pair of 1c orange Confederation issues, tied by grid cancels. Very fine.
.....Unitrade \$450



- 485 ☒ **#CL28 Cover Addressed to Red Lake, Franked with CL28**, untied and un-postmarked on back, the two 1c orange yellow Admirals on front are tied by illegible c.d.s., very fine. Unitrade lists on-cover use at \$300.

.....Est \$100



- 486 ☒ **#CL29 Feb. 3 1928 Sioux Lookout to Red Lake Stationery Cover with CL29**, on back (with plate number imprint selvage), tied by a FEB.3.1928 Red Lake datestamp, the front has a Sioux Lookout duplex despatch dated same day, very fine.

.....Unitrade \$350



- 487 ☒ **#CL29a Dec. 12 1928 Rolling Portage to Red Lake Cover Franked with CL29a**, on front (with purple Type D overprint), postmarked Rolling Portage DEC.12.1928, alongside a 2c green KGV Scroll, tied by the same datestamp. Back has a same day Red Lake receiver. The last recorded flight by Patricia Airways and Exploration Ltd. was on Nov. 11 1928, and so this cover was carried by the Western Canada Airways Ltd., as evidenced by their green cachets on front and back. An interesting and very fine cover.

.....Unitrade \$350



- 488 **#CL29c Sept. 17 1927 Red Lake to Sioux Lookout**
Cover with CL27, on back (with inverted Type D overprint in black), tied by Sioux Lookout SEP.17.1927 c.d.s., mailed at Red Lake on SEP.13 (datestamp tying 2c green Admiral on front). Very fine and a scarce stamp on cover.
Unitrade \$425



- 489 **#CL30c 1928 Patricia Airways Semi-Official Airmail**
Variety on Cover, franked with 2c Confederation and Patricia Airways Exploration semi-official (#CL30c variety with inverted overprint), tied by Rolling Portage MY.2.28 datestamp, addressed to Red Lake with same-day arrival backstamp and WESTERN CANADA / AIRWAYS LIMITED / MAY 2 1928 / RED LAKE ONT handstamp. A scarce and attractive example.
Est \$250



- 490 **#CL30f var May 27 1929 Sioux Lookout to Red Lake**
Cover with CL30f Variety, on front (with inverted overprint in green), tied by a MAY.27.1929 Sioux Lookout c.d.s., alongside a 2c green KGV Scroll issue tied by same day Sioux Lookout duplex. Back has a Red Lake MAY.30 green c.d.s., alongside a Sioux Lookout MAY.31 receiver. Back also shows a purple Western Canada Airways Ltd. handstamp cachet. Presumably they were still accepting the former carriers' stamps in lieu of their own. Very fine. Inverted overprints for this stamp on cover are uncatalogued by Unitrade, which gives a value of \$200 for inverted overprinted stamps, as opposed to \$75 for regular overprinted stamps, so about 2.6 times. Using the same ratio applied to the on-cover value of \$300 for regular stamps, this would make for a value of \$780.
Est \$250



- 491 **#CL30f var March 9 1928 Sioux Lookout to Red Lake**
Cover with CL30f Variety, on back (with inverted overprint in green), tied by a MAR.9.1928 Red Lake datestamp., front is franked with a 2c green Admiral issue tied by same day Sioux Lookout duplex. Very fine, with tear on back not affecting the stamp. Inverted overprints for this stamp on cover are uncatalogued by Unitrade, which gives a value of \$200 for inverted overprinted stamps, as opposed to \$75 for regular overprinted stamps, so about 2.6 times. Using the same ratio applied to the on-cover value of \$300 for regular stamps, this would make for a value of \$780.
Est \$250



- 492 **#CL30 var May 2 1928 Rolling Portage to Red Lake**
Cover with CL30 Variety, on front (with inverted overprint in black), tied by two strikes of MAY.2.1928 Rolling Portage datestamps, alongside a 2c green Confederation issue also tied by same. Back has a Red Lake same day receiver, alongside a Western Canada Airways Ltd. handstamp cachet in green. Presumably this company had not yet received their stamps (CL40) and were accepting the former carriers' stamps in lieu. Very fine. Inverted overprints for this stamp on cover are uncatalogued by Unitrade, which gives a value of \$200 for inverted overprinted stamps, as opposed to \$85 for regular overprinted stamps, so about 2.3 times. Using the same ratio applied to the on-cover value of \$300 for regular stamps, this would make for a value of \$690.
Est \$250





x493

- 493 ☒ #CL40 Three Different Covers Each Franked with a CL40, dated MAY.10.1927 from Winnipeg, DEC.23.1927 from The Pas, JUN.4.1928 from Rolling Portage. All three have different flight cachets and are very fine. All sides scanned online.

..... Est \$100



- 494 ☒ #CL41 July 1 1927 Western Canada Airways Ltd. Cover with CL41, on front of a cover mailed from Goldpines to Lac du Bonnet (JUL.5 receiver), through Rolling Portage (JUL.1 backstamp). The CL41 is tied by a purple Maple Leaf signed cachet and the back of the cover has an all-over map of the routes flown by them. Paperclip stain at top, else overall very fine.

..... Unitrade \$375



- 495 ☒ #CL41 July 1 1927 Western Canada Airways Ltd. Cover with CL41, on front of a cover mailed from Lac du Bonnet (JUL.1 duplex ties Admiral stamps) to Winnipeg (no receiver). The CL41 is tied by a nice strike of a blue Maple Leaf cachet, very fine.

..... Unitrade \$375



496

- ☒ #CL41 Dec. 3 1927 Western Canada Airways Ltd. Cover with CL41, on front of a cover mailed from Red Lake to Rolling Portage, with Red Lake DEC.3.1927 datestamps on front, including one tying the 5c Confederation issue and one tying the CL41. There are also some "Via Air Mail" handstamps and a signature of the pilot. The back of the cover has a green Western Canada Airways Ltd. cachet, as well as a brown Canadian Philatelic Exhibition 1925 Montreal stamp depicting a beaver. Couple of light stains, still very fine.

..... Unitrade \$375



x497

- 497 ☒ #CL42 Group of Four Different Covers Franked with CL42, all franked with a 2c green Confederation plus a CL42 on front and mailed on April 13, 1928 from Atlin, Carcross and White Horse (x2, one is pilot signed). Very fine.

..... Est \$100



x498

- 498 ☒ #CL43, 44 Two Covers Franked with CL43 and CL44, CL43 is on front of a cover Jackson Manion (APR.10.1928) to Sioux Lookout (APR.13.1928) with purple Maple Leaf Patricia Airways cachet and 2c Confederation stamp. CL44 is on back of a cover Victoria (AUG.3.1928) to Vancouver (same day receivers tie the semi-official stamp) with first flight cachet in black on front. Both covers very fine.

..... Unitrade \$350



- 499 **#CL45 Dec. 31 1928 Klondike Airways Ltd. Cover with CL45**, CL45 is on front, tied by a Dawson c.d.s., alongside a 2c green Admiral tied by a Dawson duplex, both on cover to Roessler in New Jersey. Both stamps with a little toning, still very fine and scarce.
.....Unitrade \$450



- 500 **#CL46 1929 Cherry Red Airlines Flown Cover to Stanley Mission and Return**, franked with two CL-46 Cherry Red stamps to pay for the round trip. Mailed at Prince Albert on AUG.10.1929 and flown to Stanley Mission on AUG.12, then flown back on the same day. There was no post office at Stanley Mission so covers were backstamped at Lac la Ronge on the 12th. Prince Albert duplex receiver is dated AUG.15. An interesting cover, with only 70 items flown, very fine.
.....Est \$150



x501

- 501 **#CL46, 46i Group of Four Different Cherry Red Airline Ltd. Covers with CL46, 46i**, CL46 DEC.25 1929 Prince Albert to Ile a la Crosse plus MAR.12.1930 Christopher Lake to Prince Albert. CL44i "snow on wings" with DEC.23.1929 Montreal Lake to Ile a la Crosse and DEC.26.1929 Lac la Ronge to Ile a la Crosse. All four covers very fine and all scanned online.
.....Est \$100



x502

- 502 **#CL47, 48 Group of Three Different Commercial Airways Ltd. Covers, with CL47 and CL48**, CL47 is on back of a MAY.21.1929 cover Grande Prairie to Edmonton. CL48 on back of FEB.23.1931 cover Fort McMurray to Athabasca, and one on back of a DEC.5.1930 cover Edmonton to Peace River. All have cachets and are very fine.
.....Unitrade \$350



x503

- 503 **#CL49, 49a, 50 Group of Three Different Commercial Airways Ltd. Covers, with CL49, 49a and 50**, CL49 is on back of a JUL.23.1930 cover Edmonton to Fort McMurray, CL49a ("broken C on CIAL") is on back of a JUL.23.1930 cover Edmonton to Fort McMurray and CL40 is on back of a DEC.9.1930 cover Edmonton to Fort McMurray. All three have the proper cachet and are very fine.
.....Unitrade \$780



x504

- 504 **#CL51, 52 Two Canadian Airways Covers Franked with CL51 and 52**, CL 51 on back of DEC.31.1932 cover Fort McMurray to Edmonton, CL52 on back of JUL.19.1934 cover Edmonton to Fort McMurray. Both have the proper cachet and are very fine.
.....Unitrade \$165

The Red Baron Collection



TERMS & CONDITIONS OF SALE

1. The property described in the sale catalogue (print and online versions) will be offered at public auction by Sparks Auctions Inc. (hereinafter "Sparks Auctions") on behalf of various consignors. By bidding on any lot, whether in person, or through an agent, via Stamp Auction Network, by mail, email, fax, telephone, website, or any other means, **the bidder acknowledges and agrees to all of these Terms and Conditions of Sale.**

2. The highest bidder acknowledged by the auctioneer shall be the buyer. The term "hammer price" means the last bid acknowledged by the auctioneer. **The purchase price payable by the buyer will be the sum of the hammer price and a commission equal to 17% of the hammer price** ("buyer's premium"), together with any tax which may be applicable. See "About Bidding" for more information about how bidding is conducted in Sparks Auctions' sales.

3. All bids are per lot as numbered in the catalogue. The auctioneer shall regulate the bidding and reserves the right to reject any bid believed by him not to be made in good faith; to withdraw any lot prior to sale; to divide a lot; or to group two or more lots and to act on behalf of the vendor. In the event of any dispute, **the auctioneer's decision shall be final.** Sparks Auctions will execute bidding instructions on behalf of clients, but will not be responsible for any errors in the execution of such bids. Opening bids will be available on Stamp Auction Network and will be updated by that system.

4. Unless a bidder has established payment terms with Sparks Auctions prior to the sale, Sparks Auctions must receive payment in full before the lots will be delivered. Buyers not known to Sparks Auctions must make payment in full within five days from the date of sale. Accounts more than thirty days in arrears will be subject to a **late payment charge of 2% per month.** All expenses incurred in securing payment from delinquent accounts will be charged to the defaulter. A fee of \$100.00 will be charged for any cheque returned for insufficient funds.

5. All sales are conducted in **Canadian Funds.** Payment may be made by e-transfer, bank draft, bank wire transfer, cheque drawn on a Canadian or U.S. bank, Canadian or International postal money order, cash or credit card. **There is a 2.5% convenience fee to process credit card payments.** Cash/Cheque payment in U.S. funds is acceptable at the same rate which Sparks Auctions can purchase Canadian Funds at our bank (2.5% percent above the midmarket rate). Contact us if you require the exact amount owed in U.S. funds. Credit cards will be processed in Canadian Funds. **Buyers from Canada will be charged the taxes applicable in their home province.** Bidders resident outside Canada are not liable for Canadian taxes if purchases are delivered outside of Canada. See "Shipping Information" for Sparks Auctions' shipping policies. Buyers outside Canada are responsible for all customs duties applied by their home country.

6. **Until paid in full, all lots remain the property of Sparks Auctions on behalf of the seller.**

7. The buyer assumes all risk for delivery of purchased lots and agrees to pay for prescribed shipping costs. See "Shipping Information" below for Sparks Auctions' shipping policies.

8. Because the auction catalogue is available in multiple formats (print, online at sparks-auctions.com and StampAuctionNetwork.com) there is a possibility of technical or other error. In that event **the auctioneer's decision will be final.** If discovered before the sale, corrections will be posted on www.sparks-auctions.com. These are only provided as a service to bidders and Sparks Auctions does not guarantee their completeness or accuracy. See "Valuation of Lots" for an overview of Sparks Auctions' use of catalogue values and estimates.

9. **Any lot, the description of which is obviously incorrect, is returnable, but only if the lot is returned to us within 14 days of receipt.** All disputed lots must be returned intact with the original packing material. **The following lots may not be returned for any reason:**

- Lots containing ten or more items;
- Any lot described with "faults" or "defects" may not be returned because of any fault or defect;
- No lots illustrated in our printed catalogue or online may be returned because of centering, margins or other factors shown in the illustrations, including easily visible flaws. It is the bidder's responsibility to view lot images online before bidding.
- No lot shall be returned due to subsequent numerical grading unless the graded certificate describes faults not already described by us;
- It is normal for postal history items to have small faults including but not limited to minor nicks, pencil notations on back, edge and backflap tears, and slight reductions consistent with commercial usage. Folded letters should be expected to have at least one file fold. While we strive to mention more significant flaws,

condition issues such as the aforementioned are not grounds for return. Items being offered primarily on the basis of the postmark are not returnable on the basis of flaws to the underlying item.

f. If electronic media are included with a lot (for example, CD, DVD, USB device, etc.) we cannot take any responsibility for the contents or integrity of such media and the buyer assumes any and all risk associated with use of it, including any damage to electronic devices by such use.

10. All lots are sold as genuine, unless otherwise noted. If a purchaser wishes to obtain an expert opinion on a lot, an extension for expertization may be granted provided that the following conditions are met:

- Notice of this intent is given prior to finalizing the purchase.
- The purchase price of the lot is paid in full, including any expertizing fees.
- All lots to be sent out on extension must be paid in advance and submitted by Sparks, directly. Sparks will use one of the following expertizing services:
 - Vincent Graves Greene Foundation (Canada and BNA); or
 - BPA or RPSL (British Commonwealth); or
 - Philatelic Foundation or PSE (USA and territories); or
 - Another authority mutually agreeable to both parties.
- Extensions are granted for the reasonable period of time required by the expertizing authority;
- If in the opinion of the authority the lot is not genuine or was grossly misdescribed, the purchaser shall receive a full reimbursement of the purchase price including the expertization fee;
- If a purchased item has a recognized certificate dated within the last seven years, extensions will not usually be granted.

11. Lots which include the notation '**Rsv.**' are offered subject to a minimum bid ("reserve"), agreed to between the consignor and Sparks, below which the lot will not be sold in the auction. Any lot which does not meet the reserve will be stated to have been "passed" during auction proceedings.

12. Should any dispute arise over these Terms and Conditions, such dispute will be settled according to the laws and regulations of the Province of Ontario, Canada, with options for resolution being negotiation between the parties, followed by mediation, followed by action in the most appropriate legal venue in Ontario.

Shipping Information

Please note that items will be shipped by the least expensive method below unless other arrangements are made between the buyer and Sparks Auctions in advance of shipping.

All shipping methods are subject to the current regulations and protocols of the shipping provider, which can change from time-to-time in response to various conditions outside the control of Sparks Auctions. To maximize shipping efficiency and minimize cost to the buyer, some lots may be shipped without multi-ring binders or other bulky housing mentioned in a lot description, or by combining the contents of multiple housings into fewer of them.

Within the National Capital Region:

- Normally, it is expected that local residents will arrange for pick-up from our office, by appointment only.
- Shipping can be arranged using the "Within Canada" methods described below, or by other means if specific arrangements are made between the buyer and Sparks Auctions.

Within Canada:

- Single or multiple lots that fit into one or more regular Canada Post Xpresspost labeled envelopes will be shipped by that method with signature required. These lots will be charged postage only but not a handling, packaging, or insurance fee.
- Cartons and larger lots will normally be shipped by parcel post or FedEx with signature required. If bulky lots have a value in excess of \$1,000 they will be shipped by Xpresspost with signature required. This category of lots will usually be charged an additional handling or packaging fee.

To the USA:

- Single or multiple lots will be sent by Canada Post with signature required and no extra handling, packaging, or insurance fees.
- Cartons and larger lots will be shipped by Canada Post parcel post or FedEx Ground with signature required. This category of lots will usually be charged an additional handling or packaging fee.

Overseas:

- Single or multiple lots will be sent by Registered or Xpress Mail with signature required and no extra handling, packaging or insurance fees.
- Carton and larger lots will be shipped by pre-arrangement only. We reserve the right to not ship to areas of the world not served by FedEx.

About Bidding

Bidding in a Sparks Auction takes place in accordance with our Terms and Conditions and can happen in several ways:

1. Advance Bidding

We accept bids in the time-honoured tradition before the auction starts:

- a. you can mail us a printed bidsheet (included with the print catalogue and also available for download from our site). If you use mail to send us a bidsheet, please call at least the day before the sale begins to confirm that we have received it.
- b. you can fax us a printed bidsheet (included with the print catalogue and also available for download from our site) to 613-567-2972.
- c. you can call our office at 613-567-3336 or use our North American toll-free number is 844-252-2032.
- d. you can email your bids to info@sparks-auctions.com. Simply provide the lot number and your maximum bid in Canadian dollars.

Please use the following bidding increments:

\$10 - \$200	\$10	\$7000 - \$15,000	\$500
\$200 - \$800	\$25	\$15,000 - \$30,000	\$1,000
\$800 - \$1500	\$50	\$30,000 - \$100,000	\$2,000
\$1500 - \$3000	\$100	\$100,000 - \$500,000	\$5,000
\$3000 - \$7000	\$200	above \$500,000	\$10,000

All bids not conforming to these increments will be rounded down to the previous increment.

If two identical bids are received for a particular lot, the bid received earliest will prevail, regardless of how the bid was received.

2. Telephone Bidding

We can arrange for you to participate in the sale via telephone. Phone bidding must be arranged at least one day in advance so we can assign a staff person to call you at the time the lots you want come up for sale. In general, telephone bidding is best for more expensive items. If telephone bidding is not convenient for you, we encourage bidders to engage an agent, or to use live bidding on Stamp Auction Network to make sure their bids are executed in the way they would like. Please see below for more information about live bidding or contact us for more information at 613-567-3336.

Sparks Auctions reserves the right to refuse telephone bidding at any time. Sparks Auctions will not be held responsible in the event that a telephone bidder cannot be contacted or does not have reliable service.

3. Auction Agents

Having an agent act for you is a good way to make sure your bidding intentions are well-represented if you cannot participate in person or through live bidding via Stamp Auction Network. Auction agents can view material, when public viewing is an option. The following agents are knowledgeable, experienced auction buyers known to Sparks Auctions and familiar with our sales. Please contact one of them, or your own existing agent directly to make arrangements suitable to both parties. Sparks Auctions is not responsible for a bidder's relationship with any agent. Agents: please contact our office at least two days before the start of a sale to make arrangements for your clients to be billed and to have their winnings shipped.

Jamie Hennebury
709-351-4103
probuck5@hotmail.com

Claude Michaud
902-443-5912, 902-456-0950 cell
jcm.ph@ns.sympatico.ca

Nick Martin, LoveAuctions UK
(44) 0120546 0968
nick@loveauctions.co.uk

Frank Mandel
212-675-0819
busybird1@me.com

4. Live Internet Bidding

For the most satisfying and realistic experience akin to being on the auction floor, we invite you to participate via live Internet bidding, which allows bidders anywhere in the world to participate in the auction. Sparks Auctions is pleased to make the auction available through Stamp Auction Network, an independent provider of philatelic auction services for auction houses and bidders. We will do everything we can for our customers to make the process simple, trustworthy and fun. To access Sparks Auctions live internet bidding, connect to Stamp Auction Network at:

www.StampAuctionNetwork.com

Register once with Stamp Auction Network and create a user name, which will then allow you to choose auction firms to bid with, including Sparks Auctions. We will review your request for registration as soon as possible during normal business hours. If your application was made more than a few days ago, please contact us.

Valuation of Lots

Catalogue values are listed for many lots in the sales. These are the best available guides to the retail price of a single stamp or set provided that the item(s) are the same quality as the standard described in the introduction to each catalogue. Exceptional quality will often sell above the catalogue value; inferior quality will sell for less; faulty stamps in a lot can result in a sale price of a small percentage of the catalogue price.

When cataloguing collections we use the value for the grade specified. For Scott this grade is very fine. For Unitrade we use the grade specified in the lot's description. Thus a "fine" collection will have all stamps added at the fine price. We do not count obvious forgeries, reprints etc. and usually do not count faulty or ugly stamps. A lightly penciled X under a stamp in a lot means it was not counted in the catalogue value. We put a light pencil note beside more expensive stamps and often put a total catalogue value at the bottom of each page to assist viewers.

The following catalogues have been used. If there is a variance from this list, it will be mentioned in the text of the description.
2021 and 2022 Scott Catalogue Volumes 1A through 6B in US\$
2021 Scott Classic and US Specialized in US\$
2021 Unitrade Specialized Catalogue of Canadian Stamps in CAN\$

2021/2022 Stanley Gibbons 1840-1970 (SG), values in £
2007 or later Michel Catalogues of the World (Mi), values in €
2017 The Canadian Revenue Stamp Catalogue by E.S.J. Van Dam in CAN\$
Other specialized catalogues as noted in descriptions.

The U.S. Specialized and the Scott Classic are referred to as "Scott" interchangeably with the standard 6 volumes.

The term "owner's catalogue value" indicates a variety of approaches and may include older versions of catalogues. We will have inspected and reviewed the result but not re-catalogued; hence we do not vouch for the exact total of an "owner's catalogue value". Likewise, we will note "owner-identified" when there are varieties or other notations included in the consignment, even if we have not verified them.

"Estimates" ("Est.") are used when there are multiple factors to consider and to identify what we believe the lot might sell for when there is reasonable competition for it.

"Face Value" is used for entire lots when it best describes the value of the contents. From time to time, "face value" is used to identify the face value of a portion of a lot that also considers additional factors.



BID SHEET

Public Auction #40-41 — February 26th, 2022

SPARKS AUCTIONS

1770 Woodward Drive, Suite 101, Ottawa, ON K2C 0P8

Telephone: (613) 567-3336 844-252-2032 toll-free FAX: (613) 567-2972

Email: info@sparks-auctions.com www.sparks-auctions.com

Your name and full mailing address:(please print):

Daytime telephone_____

Fax:_____

Email:_____

I authorize Sparks Auctions to purchase on my behalf the following lots at or under the limited stated. I agree to the terms of sale as printed in the catalogue.

Signature

References:

Stamp Firm

Telephone

Stamp Firm

Telephone

A buyer's Premium of 17% will be added to the hammer price and becomes part of the total purchase price.

Lot Number	My Top Bid	Lot Number	My Top Bid	Lot Number	My Top Bid	Lot Number	My Top Bid

PLEASE LIST ADDITIONAL BIDS ON REVERSE OR COPY TO LIST ADDITIONAL BIDS

Check appropriate boxes:

- ☐ You may increase my bids by one increment to break a tie.
☐ You may increase my bids by _____% if competition warrants.

**Please bid using these increments.
(All bids are in Canadian dollars.)**

\$10 - \$200	\$10	\$7000 - \$15,000	\$500
\$200 - \$800	\$25	\$15,000 - \$30,000	\$1,000
\$800 - \$1500	\$50	\$30,000 - \$100,000	\$2,000
\$1500 - \$3000	\$100	\$100,000 - \$500,000	\$5,000
\$3000 - \$7000	\$200	above \$500,000	\$10,000

See reverse for options such as limit bids, credit card payments* etc.

LIMIT BIDS If you wish to limit the total amount of your successful bids (not including the 17% buyer's premium) enter the amount here. \$ _____
Your bids will be executed until this figure is reached.

I would like to pay by VISA or MASTERCARD. ***Please note: We charge a 2.5% convenience fee to process Visa & MasterCard payments**

CC # _____ Expiry ____/____

Validation number on back _____ (this must be provided)

Name as shown on card: _____

Authorizing Signature _____

☐ Please check here if you have provided us with your email address and you would like us to enter your bids in the Stamp Auction Network system. You will receive email messages advising you of the status of your bids.

Lot Number	My Top Bid	Lot Number	My Top Bid	Lot Number	My Top Bid	Lot Number	My Top Bid

Corrections & Updates

AUCTION #40-41 UPDATES TO LOT DESCRIPTIONS

Thursday, February 24, 2022 at 2:15pm EST.

Sale posted at [Stamp Auction Network](#) on Friday, January 28, 2022 at 9:00am EST.

LOT#	Correction
136	The photo for this stamp in the printed catalogue is incorrect. The correct photo is shown on StampAuctionNetwork.com .
304	The lower right stamp has a tiny inclusion that can be seen on both sides of the stamp.
383	This is not from a booklet pane, but rather from a sheet of 20, and this does not affect the value.

Sparks Auctions
Prices Realized for

Sale 40 February 26, 2022 Sparks Auctions' Sale #40, The Bytown Collection & Sale #41, The Red Baron Collection

Lot#	Realized	Lot#	Realized	Lot#	Realized	Lot#	Realized	Lot#	Realized	Lot#	Realized	Lot#	Realized
1	800	46	50	91	375	136	100	181	250	226	180	271	325
2	725	47	350	92	2,400	137	350	182	1,500	227	850	272	120
3	250	48	400	93	725	138	120	183	225	228	375	273	850
4	140	49	225	94	160	139	200	184	425	229	100	274	130
5	325	50	325	95	50	140	40	185	375	230	90	275	350
6	525	51	190	96	30	141	275	186	1,900	231	110	276	150
7	375	52	190	97	150	142	850	187	200	232	120	277	425
8	1,900	53	350	98	60	143	120	188	450	233	375	278	90
9	400	54	625	99	160	144	225	189	350	234	225	279	250
10	1,200	55	1,400	100	130	145	160	190	475	235	425	280	900
11	400	56	550	101	90	146	180	191	525	236	225	281	625
12	1,050	57	350	102	750	147	80	192	250	237	375	282	160
13	850	58	40	103	300	148	425	193	250	238	525	283	150
14	1,900	59	120	104	325	149	850	194	225	239	120	284	625
15	90	60	300	105	350	150	375	195	1,000	240	1,350	285	275
16	100	61	170	106	30	151	500	196	90	241	625	286	800
17	250	62	375	107	140	152	140	197	250	242	375	287	170
18	70	63	70	108	130	153	275	198	300	243	1,250	288	300
19	225	64	250	109	70	154	225	199	1,450	244	225	289	400
20	800	65	225	110	190	155	275	200	225	245	110	290	300
21	325	66	225	111	200	156	350	201	150	246	450	291	130
22	500	67	450	112	200	157	325	202	225	247	500	292	225
23	250	68	400	113	775	158	225	203	375	248	300	293	2,600
24	275	69	900	114	150	159	1,700	204	425	249	475	294	500
25	400	70	425	115	170	160	50	205	110	250	500	295	250
26	250	71	130	116	160	161	190	206	200	251	800	296	400
27	1,300	72	190	117	400	162	575	207	250	252	500	297	800
28	1,800	73	300	118	130	163	200	208	425	253	275	298	130
29	160	74	550	119	180	164	250	209	80	254	275	299	160
30	160	75	325	120	60	165	1,100	210	130	255	160	300	110
31	140	76	525	121	150	166	425	211	100	256	525	301	400
32	150	77	1,300	122	90	167	275	212	100	257	160	302	200
33	275	78	1,700	123	70	168	225	213	100	258	275	303	700
34	300	79	525	124	250	169	110	214	500	259	400	304	1,250
35	225	80	190	125	375	170	150	215	100	260	375	305	90
36	425	81	30	126	700	171	30	216	275	261	130	306	90
37	250	82	200	127	300	172	350	217	180	262	250	307	190
38	325	83	325	128	130	173	575	218	160	263	400	308	130
39	300	84	140	129	110	174	140	219	100	264	130	309	225
40	400	85	750	130	575	175	140	220	200	265	110	310	110
41	1,050	86	425	131	475	176	1,050	221	425	266	675	311	400
42	850	87	425	132	275	177	900	222	425	267	675	312	180
43	575	88	425	133	850	178	325	223	200	268	100	313	275
44	850	89	160	134	50	179	1,050	224	225	269	70	314	180
45	4,000	90	950	135	150	180	8,000	225	500	270	120	315	550

Sparks Auctions
Prices Realized for

Sale 40 February 26, 2022 Sparks Auctions' Sale #40, The Bytown Collection & Sale #41, The Red Baron Collection

Lot#	Realized	Lot#	Realized	Lot#	Realized	Lot#	Realized
361	425	406	225	451	250	496	100
362	500	407	225	452	190	497	110
363	250	408	1,450	453	120	498	130
364	300	409	3,000	454	90	499	100
365	400	410		455	300	500	70
366	375	411	325	456	160	501	90
367	225	412	675	457	180	502	120
368	160	413	650	458	425	503	160
369	1,350	414	110	459	190	504	80
370	1,050	415	850	460	110		
371	8,000	416	2,200	461	80		
372	14,000	417	2,400	462	250		
373	1,450	418	525	463	100		
374	190	419	70	464	170		
375	500	420	130	465	500		
376	525	421	250	466	225		
377	950	422	200	467	225		
378	70	423	150	468	575		
379	1,050	424	225	469	350		
380	1,000	425	170	470	425		
381	1,000	426	300	471	375		
382	675	427	160	472	325		
383	425	428	160	473	190		
384	170	429	225	474	450		
385	110	430	160	475	425		
386	375	431	400	476	90		
387	200	432	500	477	170		
388	120	433	250	478	140		
389	80	434	1,150	479	90		
390	275	435	180	480	90		
391	80	436	1,050	481	80		
392	180	437	325	482	140		
393	225	438	325	483	80		
394	110	439	150	484	200		
395	300	440	2,200	485	60		
396	425	441	275	486	110		
397	500	442	850	487	130		
398	1,100	443	100	488	110		
399		444	140	489	90		
400	225	445	650	490	200		
401	475	446	2,600	491	100		
402	600	447	725	492	100		
403	525	448	250	493	90		
404	725	449	120	494	140		
405	650	450	120	495	150		



9



14



27



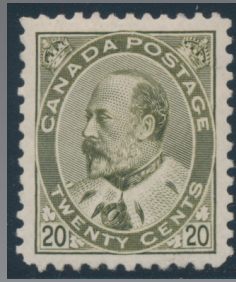
45



78



80



92



107



126



180



227



240



281



286



302



317



323