

SPARKS

AUCTIONS

***The Parker Family Collection
of Early Canada and BNA Essays, Proofs and Stamps***



Lot 255

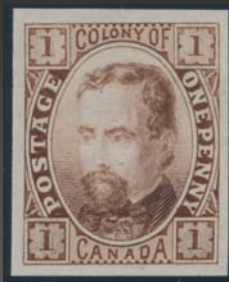
January 27th, 2022 Sale #39
www.sparks-auctions.com



2



5



6



18



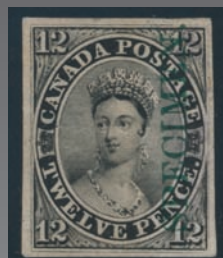
27



28



29



31



58



78



100



160



181



182



153



183



215



294



423

SPARKS AUCTIONS SALE 39

	Page
<i>About Bidding on the Internet</i>	85
<i>Agents</i>	85
<i>Bidsheet</i>	87-88
<i>Catalogue valuations</i>	85
<i>Editorial</i>	2
<i>Shipping Information</i>	84
<i>Symbols & Abbreviations</i>	83
<i>Terms & Conditions</i>	84
<i>Viewing</i>	2

**See our auction online at
StampAuctionNetwork.com,
where you will find scans and photos
of all lots and live internet bidding.**

***Our website has the entire printed catalogue,
additional scans, up-to-date corrections, etc.
Check back daily for featured lots.***

**1770 Woodward Drive, Suite 101
Ottawa, Ontario, CANADA K2C 0P8
Office Hours: By Appointment Only**

Tel: 613-567-3336

Fax: 613-567-2972

844-252-2032 toll-free in North America

Email: info@sparks-auctions.com

www.sparks-auctions.com

Welcome to our first sale of 2022, a very exciting year that begins with this special name sale.

This collection was curated by a father and son team for over 50 years. At first, they purchased items from local (UK) dealers, but soon progressed to buying only from a handful of reputable auction houses, including Sparks Auctions. They started out purchasing mint and used issued stamps of Canada and the BNA provinces, and then expanded into imperforate pairs, as well as essays and proofs, often in multiples.

We are certain there will be something in this collection for everyone: collectors and dealers alike. This sale has no lots with minimum starting prices ("reserve"), which means all items will start at \$10 and the market will decide the final selling price. The sale is conducted in Canadian dollars, and successful buyers will be charged an industry low 17% buyer's fee.

Enjoy the sale, and let us know if you like what you see, as we are always open to discussing the sale of your collection in this custom catalogue name sale format.



Stephane Cloutier
Auction Manager

VIEWING

Viewing will be booked by appointment only to ensure appropriate social distancing measures are taken to keep staff and bidders safe.

Please contact the office or see our website for more information.

Phone: 613-567-3336

Email: info@sparks-auctions.com



CANADA & BRITISH NORTH AMERICA

**THURSDAY, JANUARY 27th, 2022
10:00a.m.**

Lots #1-491

	Lots
1851-1859 Pence Issues	1-64
1859-1864 Cents Issues	65-110
1868-1876 Large Queens	111-139
1870-1893 Small Queens	140-187
1897-1902 Victoria Issues	188-217
1903-1908 Edward and Québec	218-226
1912-1925 Admirals including War Tax	227-231
1927-1952 King George V- QEII	232-257
Back of the Book	258-263
British Columbia and Vancouver Island	264-282
New Brunswick	283-311
Nova Scotia	312-381
Prince Edward Island	382-398
Newfoundland	399-491

**Province of Canada
Pence Issues Scott #1-13**



- 1** **E/P Bradbury Wilkinson 1d Engraved Plate Essay of Queen Victoria Facing Right**, in black, on thicker card, from an original design engraved by Charles Henry Jeens. It is believed that this design was submitted to the newly formed Dominion and it may have been the basis of vignette used for the Large and Small Queens. A very scarce plate proof.
..... **Est \$500**



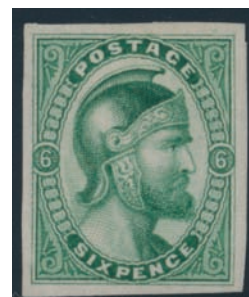
- 2** **E/P Bradbury Wilkinson 1d Engraved Plate Essay of Queen Victoria Facing Right**, in purple, on horizontal wove paper, from an original design engraved by Charles Henry Jeens. It is believed that this design was submitted to the newly formed Dominion and it may have been the basis of vignette used for the Large and Small Queens. A very scarce plate proof.
..... **Est \$500**



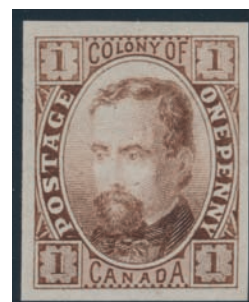
- 3** **E/P Bradbury Wilkinson 6d Engraved Proof Essay of a Viking's Head**, in blue, on soft wove paper with sheet margin at left, very fine. Minuse & Pratt E-Ca.
..... **Est \$500**



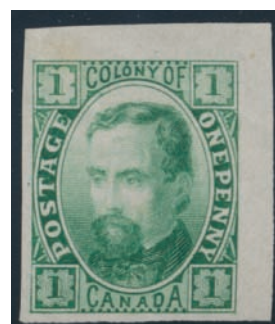
- 4** **E/P Bradbury Wilkinson 6d Engraved Plate Essay of a Viking's Head**, in purple, on vertical wove paper from upper right corner of sheet, with light corner crease in margin, still very fine. Minuse & Pratt E-Ca.
..... **Est \$500**



- 5** **E/P Bradbury Wilkinson 6d Engraved Plate Essay of a Viking's Head**, in green, on vertical wove paper, very fine. Minuse & Pratt E-Ca.
..... **Est \$500**



- 6** **E/P Bradbury Wilkinson Engraved Colony of Canada Charles Dickens Plate Essay**, in brown, on wove paper, very fine. Minuse & Pratt E-Aa.
..... **Est \$500**



- 7** **E/P Bradbury Wilkinson Engraved Colony of Canada Charles Dickens Plate Essay**, in green, on wove paper from upper right corner of sheet, very fine. Minuse & Pratt E-Aa.
..... **Est \$500**





8

- 8 E/P #1TC 3d Beaver Trial Colour Plate Proof in Red, with SPECIMEN Overprint in Carmine, on India paper, very fine.
.....Unitrade \$500



9

- 9 E/P #1TCi 3d Beaver Trial Colour Plate Proof in Brown Red, with SPECIMEN Overprint in Green Black, on India paper, very fine.
.....Unitrade \$300



- 10 E/P #1TCi 3d Beaver Trial Colour Plate Proof in Brown Red, with SPECIMEN Overprint in Green Black, an upper marginal block of four on India paper, very fine.
.....Unitrade \$1,200



11

- 11 E/P #1TCv 3d Beaver Trial Colour Plate Proof in Black, with SPECIMEN Overprint in Orange, on India paper, very fine.
.....Unitrade \$300



12

- 12 E/P #1TCvi 3d Beaver Trial Colour Plate Proof in Orange Yellow, on India paper, very fine.
.....Unitrade \$350



13

- E/P #1TCvi 3d Beaver Trial Colour Plate Proof in Orange Yellow, an upper margin block of four on India paper, attractive and very fine.
.....Unitrade \$1,400



14

- E/P #1P 3d Beaver Plate Proof in Red, a block of four on India paper, very fine.
.....Unitrade \$1,400



15

- © #1 1851 3d Red Beaver Imperforate on Laid Paper, a used vertical pair, with each stamp cancelled by a target cancel, four large to very large margins, very fine. Accompanied by a 2021 Greene Foundation certificate.
.....Unitrade \$3,200



- 16 **E/P #2TC, TCI 6d Consort Trial Colour Group of Three Distinct Shades, without SPECIMEN Overprint**, all three on India paper, with two red purples (one is mounted on card) and one red lilac, overall very fine.
Unitrade \$925



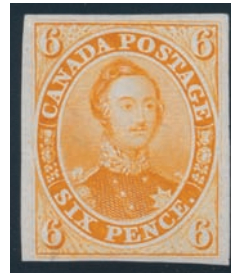
17

x18

- 17 **E/P #2TC 6d Consort Trial Colour Plate Proof in Red Lilac**, a sheet margin single on India paper, showing the printer's imprint along the whole length of the stamp, fine-very fine.
Unitrade \$300
- 18 **E/P #2TC 6d Consort Trial Colour Plate Proof Group of Three Different**, all on India paper, with Unitrade numbers 2TCv, 2TCv (in an unlisted grey blue shade) and 2TCxii (mounted on card).
Unitrade \$925



- 19 **E/P #2TCi 6d Consort Trial Colour Plate Proof in Red Purple**, a block of four on India paper, very fine.
Unitrade \$1,400



20



21

- 20 **E/P #2TCii 6d Consort Trial Colour Plate Proof in Orange Yellow**, on India paper, very fine.
Unitrade \$450
- 21 **E/P #2TCiv 6d Consort Trial Colour Plate Proof in Dark Grey, with Vertical SPECIMEN Overprint in Carmine**, on India paper, very fine and scarce.
Unitrade \$900



- 22 **E/P #2TCix 6d Consort Trial Colour Plate Proof in Black, with SPECIMEN Overprint in Carmine**, an upper left corner single, with prominent vertical and horizontal guidelines in the margins, very fine.
Unitrade \$350



- 23 **E/P #2TCvii 6d Consort Trial Colour Plate Proof in Dark Grey, with SPECIMEN Overprint in Carmine**, an upper sheet margin block of four on India paper, very fine.
Unitrade \$1,200





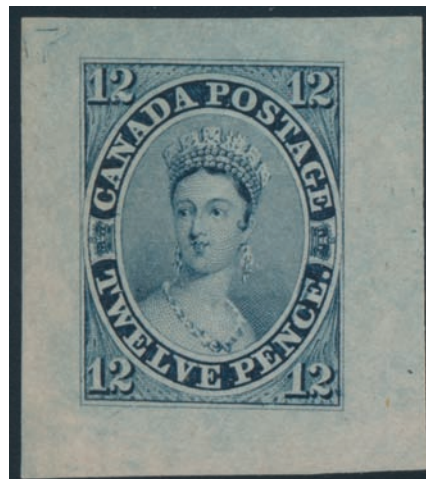
- 24 **E/P #2TCxi 6d Consort Trial Colour Plate Proof in Grey Blue, with SPECIMEN Overprint in Carmine**, a sheet margin block of four on India paper, very fine.
..... **Unitrade \$1,400**



- 25 **#2 1851 6d Slate Violet Consort Imperforate on Laid Paper**, used with light target cancel, strong laid lines with four large margins, very fine. Accompanied by a 1978 David Brandon certificate.
..... **Unitrade \$2,000**



- 26 **#2b 1851 6d Greyish Purple Consort Imperforate on Laid Paper**, used with four large and even margins and distinct colour, diagonal crease in lower right corner, else very fine. Accompanied by a 2021 Greene Foundation certificate.
..... **Unitrade \$2,500**



- 27 **E/P #3TC 12d Queen Victoria Trial Colour Die Proof in Blue Black**, on thin crisp bond paper (certificate notes it is on India), from the composite die proof. The so-called "scar" die proof, as it has a line in "CE" of PENCE. A rare and very fine item. Accompanied by a 2021 Greene Foundation certificate.
..... **Unitrade \$11,000**



- 28 **E/P #3TC 12d Queen Victoria Trial Colour Die Proof in Brown**, on India paper, from the composite die proof. The so-called "scar" die proof, as it has a line in "CE" of PENCE. A rare and very fine item. Accompanied by a 2021 Greene Foundation certificate.
..... **Unitrade \$11,000**



- 29 **E/P #3TC 12d Queen Victoria Trial Colour Die Proof in Vermillion**, on India paper, from the composite die proof. The so-called "scar" die proof, as it has a line in "CE" of PENCE. A rare and very fine item. Accompanied by a 2021 Greene Foundation certificate.
..... **Unitrade \$11,000**




- 30 **E/P #3Pi 12d Queen Victoria Plate Proof in Black, with SPECIMEN Overprint in Carmine**, on India paper, margins are close to touching at right, fine.
..... **Unitrade \$2,500**



- 31 **E/P #3Piii 12d Queen Victoria Plate Proof in Black, with SPECIMEN Overprint in Green**, on India paper, very fine. A very scarce plate proof.
..... **Unitrade \$6,500**



- 32  **#4 3d Red Beaver Imperforate on 1853 Folded Letter**, mailed on SEP.3.1853 from Montreal (very fine free strike) to Brockville (SEP.5 receiver in red on back), franked with a very fine 4-margin 3d Beaver, just tied to letter, very fine.
..... **Est \$100**



- 33  **#4i 1852 3d Deep Red Beaver Imperforate**, used with crisp "Beaver free" corner target cancel, rich colour and precise impression, with four large and even margins, very fine.
..... **Unitrade \$350**



- 34  **#4i 1852 3c Deep Red Beaver Imperforate**, a used vertical pair, with four margins all around, showing portion of next stamp at bottom, very fine.
..... **Unitrade \$700**



- 35  **#5a 1855 6d Brownish Grey Consort Imperforate**, used and tied to piece with a fine impression of the Montréal 4-ring 21 obliterator. An appealing stamp with large margins and distinct colour, very fine. Accompanied by a 1990 B.P.A. certificate.
..... **Unitrade \$2,400**

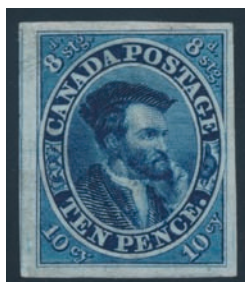


- 36 **E/P #7TCiii 10d Cartier Plate Proof in Orange Yellow**, on India paper, very fine.
..... **Unitrade \$400**





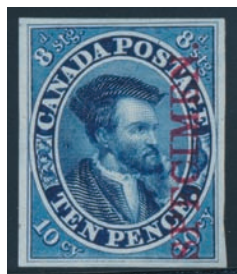
- 37 **E/P #7P 10d Cartier Trial Colour Die Proof in Brown**, on horizontal mesh wove paper, from the ABN trade sample sheet. There is a light yellow stain on front, still a rare and desirable item.
.....Unitrade \$1,000



- 38 **E/P #7P 10d Cartier Plate Proof in Dark Blue**, on India paper with large margins, showing next stamp at left, very fine.
.....Unitrade \$300



- 39 **E/P #7P 10d Cartier Plate Proof in Light Blue**, a horizontal pair on India paper, very fine.
.....Unitrade \$600



- 40 **E/P #7Pi 10d Cartier Plate Proof in Blue with SPECIMEN Overprint in Carmine**, on India paper, very fine.
.....Unitrade \$300



- 41 **E/P #7Pi 10d Cartier Plate Proof in Blue with SPECIMEN Overprint in Carmine**, a block of four on India paper, very fine.
.....Unitrade \$1,200



42



43

- 42 ☉ **#7 1855 10d Blue Cartier Imperforate on Thin Crisp Transparent Paper**, used with light unobtrusive cancel, the stamp has four large margins and is very fine. Accompanied by a 2021 Greene Foundation certificate.
.....Unitrade \$2,400

- 43 ☉ **#7 1855 10d Blue Cartier Imperforate on Thin Crisp Transparent Paper**, used with 4-ring 21 cancel from Montréal, with four large margins. Light diagonal crease, else very fine.
.....Unitrade \$2,400



- 44 (*) **#7a 1857 10d Blue Cartier Imperforate on Thicker Wove Paper**, unused (no gum) with two well-clear margins, cutting into outer margin at upper right and lower left, fine. A scarce unused stamp. Accompanied by a 1964 R.P.S.L. and a 2021 Greene Foundation certificate.
.....Unitrade \$7,000



45

- 45 **⊙ #7a 1857 10d Blue Cartier Imperforate on Thicker Wove Paper**, used with very light cancel, margins are close to large, with crisp impression typical of this paper, fresh with a trivial thin, else a fine-very fine stamp.

.....Unitrade \$2,250



46

- 46 **E/P #8TC ½d Queen Victoria Trial Colour Plate Proof in Deep Rose**, on India paper, very fine.

.....Unitrade \$300



- 47 **E/P #8TC ½d Queen Victoria Trial Colour Plate Proof in Deep Rose**, a horizontal pair on India paper, very fine.

.....Unitrade \$600



- 48 **E/P #8TCi ½d Queen Victoria Trial Colour Plate Proof in Orange Yellow**, an upper sheet margin single on India paper, tiny scuff at top, else very fine.

.....Unitrade \$400



49

- E/P #8TCii ½d Queen Victoria Trial Colour Plate Proof in Black with SPECIMEN Overprint in Carmine**, a block of four on India paper, very fine.

.....Unitrade \$1,200



50

- E/P #8TCi ½d Queen Victoria Trial Colour Plate Proof in Orange Yellow**, a block of four on India paper, very fine.

.....Unitrade \$1,600



51

- E/P #8TCii ½d Queen Victoria Trial Colour Plate Proof in Black with SPECIMEN Overprint in Carmine**, a block of four on India paper, very fine.

.....Unitrade \$1,200





- 52 E/P #8TCii ½d Queen Victoria Trial Colour Plate Proof in Black with SPECIMEN Overprint in Carmine, on card mounted India paper, very fine.
.....Unitrade \$300



- 53 E/P #8PI ½d Queen Victoria Plate Proof in Rose with SPECIMEN Overprint in Green, an upper margin block of four on India paper, showing a large part of the imprint, very fine.
.....Unitrade \$1,200



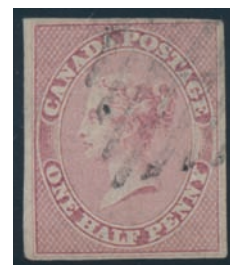
- 54 E/P #8PI ½d Queen Victoria Plate Proof in Rose with SPECIMEN Overprint in Green, a block of four on India paper, with both right hand stamps (positions 60 and 70) showing the listed re-entries, very fine. Catalogue value is for normal proofs only.
.....Unitrade \$1,200



- 55 * #8 1857 ½d Rose Queen Victoria Imperforate, mint with full original gum, very lightly hinged. A fresh and very fine stamp. Accompanied by a 2021 Greene Foundation certificate.
.....Unitrade \$2,800



56



57

- 56 (*) #8 1857 ½d Rose Queen Victoria Imperforate, unused (no gum), with four large margins, but with very light overall aging, still very fine.
.....Unitrade \$1,400
- 57 Ⓞ #8 1857 ½d Rose Queen Victoria Imperforate, used with Toronto square grid cancel, margins are well clear to just touching at upper right, fine.
.....Unitrade \$500



- 58 E/P #9TCi 7½d Queen Victoria Trial Colour Plate Proof in Black with SPECIMEN Overprint in Carmine, on India paper, very fine.
.....Unitrade \$500



- 59 E/P #9TCi 7½d Queen Victoria Trial Colour Plate Proof in Black with SPECIMEN Overprint in Carmine, a horizontal pair on India paper, very fine.
..... Unitrade \$1,000



60



61

- 60 E/P #9TCiii 7½d Queen Victoria Trial Colour Plate Proof in Orange Yellow, on India paper, very fine.
..... Unitrade \$550
- 61 E/P #9P 7½d Queen Victoria Plate Proof in Green, on card-mounted India paper, very fine.
..... Est \$350



62



63

- 62 ☉ #9 1857 7½d Green Queen Victoria Imperforate, used but still possessing its full original gum, margins are close at top and left, to clear on other sides, fine.
..... Unitrade \$2,000
- 63 ☉ #12 1859 3d Red Beaver, Perforated 11¼, used with 4-ring 18 cancel from Kingston, with intact perforations and fresh, very good.
..... Unitrade \$300



x64

- 64 E/P Balance of the Pence Issue Plate Proof Collection, all singles on India paper, with 2TC, 2TCii, 7Pi, 8TCii (x2), 9P (x3), 9TCi and 9TCii (x2). Mostly fine to very fine, a few have small India paper faults.
..... Unitrade \$4,300

Cents Issue Scott #14-20



- 65 E/P #14TCii 1c Queen Victoria Trial Colour Plate Proof in Orange Yellow, on India paper, very fine.
..... Unitrade \$350



- 66 E/P #14TCii 1c Queen Victoria Trial Colour Plate Proof in Orange Yellow, a horizontal pair on India paper, very fine.
..... Unitrade \$700

SPARKS
★ AUCTIONS

We are always seeking nice material for our sales. Contact Stéphane to discuss your consignments to our future auctions.

stephane@sparks-auctions.com





- 67 **E/P #14P 1c Queen Victoria Plate Proof in Rose**, an upper left corner block of four on India paper, with a natural pre-printing crease across both top stamps, very fine.
.....Unitrade \$1,000



- 68 **E/P #14P 1c Queen Victoria Plate Proof Set of Three Distinct Shades**, each on India paper, with rose (14P), pale rose (14TC) and claret (14TCiii). Very fine.
.....Unitrade \$775



- 69 **E/P #14Pi, Pii Two 1c Queen Victoria Plate Proof Singles with SPECIMEN Overprints**, with a vertical and a diagonal overprint, both on India paper and very fine.
.....Unitrade \$750



- 70 *** #14 1859 1c Rose Queen Victoria**, mint with original hinged gum, fresh and fine.
.....Unitrade \$750



- 71 **E/P #15TCiv 5c Beaver Trial Colour Plate Proof in Brown Red with SPECIMEN Overprint in Black**, a block of four on India paper, very fine.
.....Unitrade \$1,000



72

- 72 **E/P #15TCiv 5c Beaver Trial Colour Plate Proof in Brown Red with SPECIMEN Overprint in Black**, on card-mounted India paper, very fine.
.....Unitrade \$250



73

- 73 **E/P #15TCviii 5c Beaver Trial Colour Plate Proof in Orange Yellow**, on card-mounted India paper, very fine.
.....Unitrade \$600



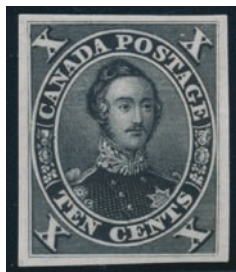
- 74 **E/P #15P 5c Beaver Plate Proof in Vermilion**, a block of four on India paper, very fine.
.....Unitrade \$1,200



- 75 **E/P #15P 5c Beaver Plate Proof in Vermilion**, on card-mounted India paper, very fine.
.....Unitrade \$300



- 76 * **#15 1859 5c Vermilion Beaver**, mint with full original hinged gum, a lovely example of this stamp with its large margins, with all perf holes well clear of the outer framelines, and great centering, extremely fine. Accompanied by a 2021 Greene Foundation certificate. A rare stamp in such premium quality.
..... Unitrade \$2,000



- 77 **E/P #16TC 10c Consort Trial Colour Plate Proof in Black**, on India paper, very fine.
.....Unitrade \$450



- 78 **E/P #16TCiii 10c Consort Engraved Trial Colour Die Proof in Vermilion**, on India paper, from the composite die proof. A very desirable item for the First Cents collector, very fine. Ex Sir Gawaine Baillie (2006). Accompanied by a 2021 Greene Foundation certificate.
..... Unitrade \$3,000



79



80

- 79 **E/P #16TCii 10c Consort Trial Colour Plate Proof in Orange Yellow**, on India paper, very fine and accompanied by a 2001 Greene Foundation certificate.

.....Unitrade \$450

- 80 **E/P #16Pi 10c Consort Plate Proof in Brown Black with Vertical SPECIMEN Overprint in Carmine**, on India paper, very fine.

.....Unitrade \$450



- 81 ☉ **#16 1859 10c Black Brown Consort, Perforated 11¼**, used with an almost imperceptible postmark (appears unused), with bright colour and fine. Accompanied by a 2021 Greene Foundation certificate.

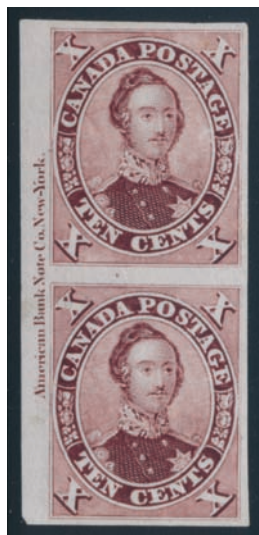
..... Unitrade \$3,500



- 82 **E/P #17TC, TCI 10c Consort Trial Colour Plate Proofs**, two distinct shades on India paper, with a lilac (17TC) and a brown lilac (17TCi, card mounted). Both are very fine, with large margins.

.....Unitrade \$525

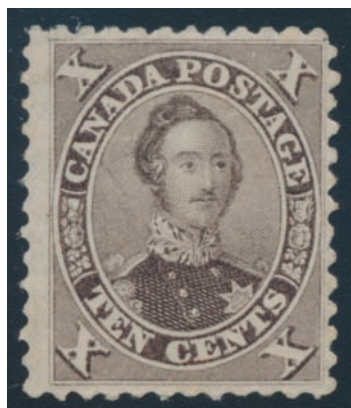




- 83 E/P #17TCi 10c Consort Trial Colour Plate Proof in Brownish Purple, a vertical pair on India paper, showing the complete printer's imprint at center left, very fine.
.....Unitrade \$550



- 84 * #17a 1859 10c Violet Consort, Perforated 12, mint with full original hinged gum, fresh and fine.
.....Unitrade \$2,500



- 85 * #17b 1859 10c Brown Consort, mint with large part original hinged gum, with perforations well clear on all sides, very fine.
.....Unitrade \$4,000



- 86 E/P #18TC 12½c Queen Victoria Trial Colour Plate Proof in Blue Green, a lower sheet margin block of six, on card-mounted India paper, showing the complete plate inscription in center of lower margin, very fine.
.....Unitrade \$1,800



- 87 E/P #18TC 12½c Queen Victoria Trial Colour Plate Proof in Blue Green, on India paper, very fine.
.....Unitrade \$300



- 88 E/P #18TC 12½c Queen Victoria Trial Colour Plate Proof in Blue Green, a sheet margin horizontal pair on card-mounted India paper, very fine.
.....Unitrade \$600



89



90

- 89 E/P #18TCi 12½c Queen Victoria Trial Colour Plate Proof in Blue, on India paper, very fine.
.....Unitrade \$400

- 90 E/P #18TCix 12½c Queen Victoria Trial Colour Plate Proof in Black, on India paper, with a small corner crease at upper left, else very fine and a scarce proof.
.....Unitrade \$650



91



92

- 91 E/P #18TCix 12½c Queen Victoria Trial Colour Plate Proof in Deep Black, on India paper, very fine and a scarce proof.
.....Unitrade \$650

- 92 E/P #18TCviii 12½c Queen Victoria Trial Colour Plate Proof in Orange Yellow, on India paper, very fine.
.....Unitrade \$400



93



94

- 93 E/P #18Pi 12½c Queen Victoria Plate Proof in Yellow Green with Vertical SPECIMEN Overprint in Carmine, on India paper, very fine.
.....Unitrade \$300

- 94 E/P #18Pii 12½c Queen Victoria Plate Proof in Yellow Green with Vertical SPECIMEN Overprint in Black, on India paper, very fine.
.....Unitrade \$350



95



96

- 95 E/P #18Piii 12½c Queen Victoria Plate Proof in Yellow Green with Diagonal SPECIMEN Overprint in Black, on India paper, very fine.
.....Unitrade \$450

- 96 * #18a 1859 12½ Blue Green Queen Victoria, mint with original hinged gum, with deep rich colour. Lightly toned at bottom, else fine.
.....Unitrade \$1,875



- 97 E/P #19TC 17c Cartier Trial Colour Plate Proof in Pale Blue, a block of four on India paper, very fine.
.....Unitrade \$1,200



98



99

- 98 E/P #19TC 17c Cartier Trial Colour Plate Proof in Pale Blue, on card-mounted India paper, very fine.
.....Unitrade \$300

- 99 E/P #19TCii 17c Cartier Trial Colour Plate Proof in Orange, on India paper, very fine.
.....Unitrade \$450





- 100** E/P #19TCi 17c Cartier Trial Colour Plate Proof in Black, a horizontal pair on India paper, very fine.
.....Unitrade \$1,100



- 101** E/P #19P 17c Cartier Plate Proof in Blue, a horizontal pair on India paper, left stamp has light staining, else fine-very fine.
.....Unitrade \$700



102

- 102** (*) #19 1859 17c Deep Blue Cartier, unused (small part original gum), with bright colour and crisp impression, fine.
.....Unitrade \$900

- 103** * #19a 1859 17c Slate Blue Cartier, Perforated 12 x 11¾, mint with original hinged gum (adhesions), fine. Accompanied by a 2021 Greene Foundation certificate.
.....Unitrade \$2,750



104

- 104** E/P #20TC 2c Queen Victoria Trial Colour Plate Proof in Dark Rose, on card-mounted India paper, very fine.
.....Unitrade \$300

- 105** E/P #20TCi 2c Queen Victoria Trial Colour Plate Proof in Claret, on card-mounted India paper, very fine.
.....Unitrade \$350

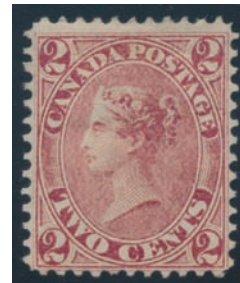


105



106

- 106** E/P #20TCii 2c Queen Victoria Trial Colour Plate Proof in Green, on India paper, very fine.
.....Unitrade \$400



107

- 107** (*) #20i 1859 2c Claret Rose Queen Victoria, Perforated 12, unused (small part original gum) hinged (hinge remnants), fine-very fine.
.....Unitrade \$550



x108

- 108** E/P #15P/20TCii Balance of the First Cents Issue Plate Proof Collection, all singles on India paper, with #s 15P (faults, not counted), 15TCiv, 16Pi (x2), 18Pii, 18TCviii, 19P, 19TCii and 20TCii. Mostly fine to very fine.
.....Unitrade \$3,150



x109

- 109** (*) #14/20 Balance of the Mint or Unused First Cent Issue, with 5 stamps, either unused (without gum or regummed) or with part original gum, but all counted as unused (as per Scott Specialized), with #s 14, 17 (2 shades, one with clipped perfs), 19 and 20. An overall fine group.
..... Scott US\$4,000



x110

- 110** ☉ **#14/20 Balance of the Used First Cents Issue**, with #s 14, 15 (x5), 17 (x2), 18 (x3), 19 (x3) and 20 (x2). An overall fine group.
**Scott US\$2,247**

**Queen Victoria Era
 Large Queens Scott #21-33**



111

- 111** * **#21 1868 ½c Black Large Queen**, mint with full original hinged gum, very fine.
**Unitrade \$250**



112

- 112** * **#22b 1868 1c Red Brown Large Queen on Thin Paper**, mint with full original gum, extremely lightly hinged, with bright colour, reperfected at sides, else fresh and very fine.
**Unitrade \$2,400**



- 113** * **#23 1868 1c Yellow Orange Large Queen**, mint with large part original gum, hinge remnant, fresh colour and fine.
**Unitrade \$1,600**



- 114** * **#23a 1868 1c Deep Orange Large Queen**, mint with full original gum, hinged and very fine. Accompanied by a 2021 Greene Foundation certificate.
**Unitrade \$6,000**



- 115** * **#24 1868 2c Green Large Queen**, mint with full original hinged gum, with bright colour, fresh and fine.
**Unitrade \$1,200**



- 116** * **#24 1868 2c Green Large Queen**, mint with original hinged gum (somewhat disturbed), very fine. Signed by Alberto Diena and accompanied by a 2021 Greene Foundation certificate.
**Unitrade \$2,800**





117

- 117 (*) #24 1868 2c Deep Green Large Queen, unused (regummed) with deep rich colour, very fine. Accompanied by a (pink) 2021 Greene Foundation certificate.

118

- 118 ☉ #24a 1868 2c Green Large Queen on Watermarked Bothwell Paper, three used stamps, each showing one or more letters of the watermark, each with small faults, still overall fine.

Unitrade \$750



119

- 119 * #24b 1868 2c Deep Green Large Queen on Thin Paper, mint with full original hinged gum, with deep colour typical to this printing, fresh and fine.

120

- 120 (*) #24b 1868 2c Deep Green Large Queen on Thin Paper, mint with large part original hinged gum, with deep colour typical to this printing, fresh and fine.

Unitrade \$1,200



- 121 (*) #25 1868 3c Red Large Queen, mint redistributed gum and hinge remnants, fine.

Unitrade \$1,000



- 122 (*) #25iii 1868 3c Deep Red Large Queen on Thick Soft Blotting Paper, unused (no gum) and very well centered, with deep, rich colour contrasting the white paper, very fine appearance but with a small corner crease at top right. Accompanied by a 2021 Greene Foundation certificate.

Unitrade \$5,000



123

- 123 * #27a 1868 6c Yellow Brown Large Queen, mint with full original hinged gum, fresh and fine.

124

- 124 * #27v 1868 6c Brown Large Queen, mint with large part original gum, pulled perf at bottom, very fine.

Unitrade \$5,000



- 125 * #28 1868 12 1/2c Blue Large Queen, mint with full original gum, lightly hinged, fresh and very fine. Accompanied by a 2021 Greene Foundation certificate.

Unitrade \$2,800



126

- 126 Ⓞ **#28a 1868 12½c Blue Large Queen on Watermarked Bothwell Paper**, used with very light cancel, showing large parts of the letters "HA" of the watermark. Short perf at right, still a fresh and fine stamp.
.....Unitrade \$300



127

- 127 (*) **#28i 1868 12½c Milky Blue Large Queen**, unused (no gum) with large margins, small stain on reverse, still very fine and fresh.
.....Unitrade \$1,500



- 128 * **#29 1868 15c Grey Violet Large Queen**, a mint block of four, with full original gum, never hinged but with glazing so counted as hinged. The two left stamps are separated horizontally, with fresh colour and overall fine. Accompanied by a 2004 Sergio Sismondo certificate.
.....Unitrade \$320

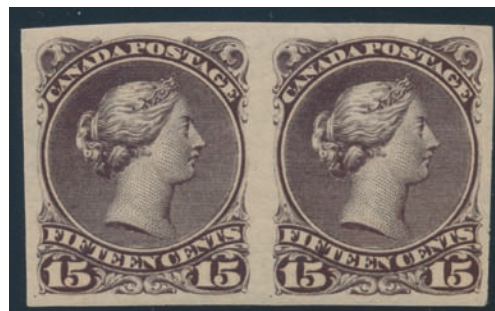


- 129 * **#29b 1868 15c Red Lilac Large Queen**, mint with full original hinged gum, bright colour but with difficult to see short horizontal crease at middle right, else fine appearance. Accompanied by a 2021 Greene Foundation certificate.
.....Unitrade \$1,200



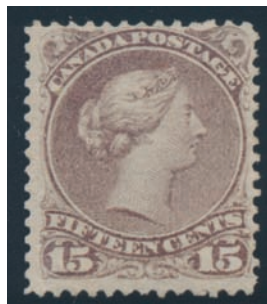
130

- Ⓞ **#29c 1868 15c Red Lilac Large Queen on Watermarked Bothwell Paper**, used with grid cancels, showing complete letters "& G" of the watermark, couple of nibbed perfs, fine.
.....Unitrade \$750



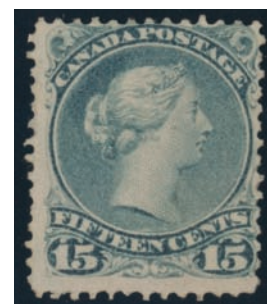
131

- * **#29d 1868 15c Brown Purple Large Queen Imperforate**, a horizontal pair with full original gum, lightly hinged, extremely fine and scarcer than the catalogue value would suggest.
.....Unitrade \$1,600



132

- 132 * **#29e 1868 15c Red Lilac Large Queen on Thin Paper**, mint with full original gum, lightly hinged, with a tiny corner crease at top right else fine. Accompanied by a 2021 Greene Foundation certificate.
.....Unitrade \$1,000



133

- 133 * **#30a var 1873 15c Blue Grey Large Queen, Perforated 11½ x 12**, mint with large part original hinged gum, fine and a scarce and little known printing.
.....Unitrade \$2,000

Proud partner sponsor of





134

- 134 ☉ **#30c 1868 15c Deep Violet Large Queen on Very Thick Paper**, used with cork cancel, bright colour and without the faults usually seen on this difficult paper, fine-very fine. Accompanied by a 1985 B.P.A. certificate (not mentioning the paper).

.....Unitrade \$425



135

- 135 ☉ **#30d 1868 15c Greenish Grey Large Queen on Pirie Script Watermarked Paper, Perforated 11 1/2 x 12**, used with light cancel and showing an almost complete letter "P" of the "Alexr. Pirie & Sons" script watermark. The stamp is reperforated at top, still a very rare stamp, especially showing such a large part of the watermark, fine.

.....Unitrade \$4,000



- 136 ☉ **#33 1868 3c Red Large Queen on Laid Paper**, used with a well centered Montreal broken circle datestamp dated AM JUL.6.1868, with strong laid lines, fine.

.....Unitrade \$1,500



x137

- 137 */(*) **#21-30 1868 1/2c to 15c Large Queen Basic Set**, all either without gum or regummed except for both 15c which have original hinged gum, generally fine.

.....Unitrade \$5,620



x138

- 138 (*) **#21/30 Balance of the Unused Large Queen Issue**, with #s 21 (x3), 22 (x2 shades), 23, 24 (x2 shades), 26, 27, 28 and 30. Mixed condition, some with faults and virtually all unused (no gum or regummed and catalogued as such in Scott Specialized).

.....Scott U\$9,710

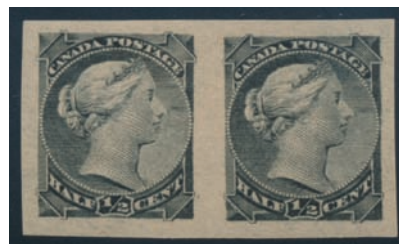


x139

- 139 ☉ **#21/30 Balance of the Used Large Queen Issue**, with #s 21 (x2), 22a (showing "MI" of watermark), 23 (x2), 25 (x3), 26 (x2), 27 (x4, with shades), 28 (x2), 29/30 (x6, with shades). Mixed condition, still with many fine.

.....Scott U\$2,870

Small Queens Scott #34-47



- 140 * **#34a 1890s 1/2c Black Small Queen Imperforate**, a mint horizontal pair, with full original hinged gum, very fine.

.....Unitrade \$800



- 141** E/P #35E 1890s 1c Queen Victoria Engraved Plate Essay in Yellow, a vertical sheet margin pair on India paper, showing most of the imprint in the margin at right, with light pencil line on lower Queen's jaw, very fine. Printed by the Canadian Bank Note Engraving and Printing Company.
.....Est \$400



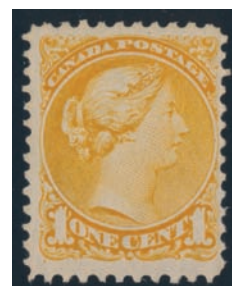
- 142** ** #35 1890s 1c Yellow Small Queen, mint with full original gum, never hinged, very fine.
..... Unitrade \$180



- 143** ** #35 1890s 1c Yellow Small Queen, a horizontal pair with full original gum, never hinged. Left stamp is fine, right stamp is very fine with a shorter perf at top.
.....Unitrade \$220



- 144** (*) #35b 1890s 1c Yellow Small Queen Imperforate, an unused (no gum) horizontal pair, very fine.
.....Unitrade \$600



- 145** * #35d 1873 1c Orange Small Queen, Perforated 11½ x 12, mint with full original streaky gum, lightly hinged and fine. Scarcer than the catalogue value would suggest.
.....Unitrade \$200



- 146** E/P #36E 1890s 2c Queen Victoria Engraved Plate Essay in Yellow Orange, a block of four on India paper, with horizontal crease across top stamps and in margin between top stamps, else very fine. Printed by the Canadian Bank Note Engraving and Printing Company. Ex Simpson, Brigham.
.....Est \$750



- 147** E/P #36E 1890s 2c Queen Victoria Engraved Plate Essay in Brown, a horizontal pair on India paper, with large margins and very fine. Printed by the Canadian Bank Note Engraving and Printing Company. Ex Brigham.

..... Est \$500



148

- 148** E/P #36E 1890s 2c Queen Victoria Engraved Plate Essay in Green, on very thin Japanese handmade paper, very fine. Printed by the Canadian Bank Note Engraving and Printing Company.

..... Est \$350



149

- 149** E/P #36E 1890s 2c Queen Victoria Engraved Plate Essay in Olive Green, on India paper, very fine. Printed by the Canadian Bank Note Engraving and Printing Company.

..... Est \$300



150

- 150** E/P #36E 1890s 2c Queen Victoria Engraved Plate Essay in Blue, on India paper, showing a minute part of the plate imprint, very fine. Printed by the Canadian Bank Note Engraving and Printing Company.

..... Est \$300



151

- 151** E/P #36E 1890s 2c Queen Victoria Engraved Plate Essay in Vermillion, on India paper, very fine. Printed by the Canadian Bank Note Engraving and Printing Company.

..... Est \$400



- 152** E/P #36E 1890s 2c Queen Victoria Engraved Die Essay in Orange Vermillion, on India paper (24 x 28 mm), very fine. Rare and ex Simpson and Brigham.

..... Est \$750



- 153** */** #36i 1890s 2c Green Small Queen, a mint block of four with full original gum, never hinged, but top two stamps have small natural gum defects (these two counted as hinged). A fresh and overall very fine block.

..... Unitrade \$800



- 154** * #36iii 1890s 2c Green Small Queen Imperforate on Yellowish Paper, a horizontal pair with full original gum, hinged and very fine.

..... Unitrade \$900



- 155** **E/P #37E 1890s 3c Queen Victoria Lithographed Plate Essay in Black**, a sheet margin single on thin wove paper, showing small part of the imprint at left, very fine. Printed by the Canadian Bank Note Engraving and Printing Company. Ex John Hillson.
.....**Est \$300**



156



157

- 156** **E/P #37E 1890s 3c Queen Victoria Engraved Plate Essay in Vermilion**, on India paper, very fine. Printed by the Canadian Bank Note Engraving and Printing Company in the same colour and design as the issued 1897 2c Universal Postal Union stationery card (Webb #P15).
.....**Est \$300**
- 157** **E/P #37E 3c Small Queen Plate Proof in Orange Red**, on India paper, with large margins, extremely fine. Scarcer than the proofs on card.
.....**Unitrade \$600**



158



159

- 158** **** #37 1880s 3c Orange Red Small Queen**, mint with full original gum, never hinged, quite fresh and well centered, very fine. Accompanied by a 2021 Greene Foundation certificate. A lovely stamp for the discriminating collector.
.....**Unitrade \$750**
- 159** *** #37a 1870 (Late) 3c Dull Rose Small Queen on Horizontal Wove Paper**, mint with full original dull hinged gum, with large margins, very fine and scarce.
.....**Unitrade \$750**



- 160** **E/P #38TCDP 5c Small Queen Trial Colour Die Proof in Bright Blue**, stamp size on thicker India paper, very fine. A lovely and scarce Small Queen item for the enthusiast.
.....**Est \$2,500**



- 161** *** #39d 1875 6c Brown Small Queen**, mint with full original hinged gum, very fine and scarcer than the yellow brown printing.
.....**Unitrade \$900**



- 162** *** #40, 40a, 40b Group of Five Montréal Printing 10c Small Queens Perforated 12**, all mint with original hinged gum (mostly hr), with #s 40 (x2), 40a (x2) and 40b, overall fine. Ex Brigham.
.....**Unitrade \$2,500**





163

163 ** #41 1890s 3c Vermilion Small Queen, mint with full original gum, never hinged, fresh and very fine.

.....Unitrade \$270



164

164 ** #41 1890s 3c Vermilion Small Queen, a mint vertical strip of three, with full original gum and never hinged. A super fresh strip, with bright colour and immaculate gum, overall fine-very fine.

.....Unitrade \$495



165 ** #41 1890s 3c Vermilion Small Queen, a mint block of four with full never hinged original gum, with bright colour and fine.

.....Unitrade \$240



166 ** #41 1890s 3c Vermilion Small Queen, a mint vertical pair with full original gum, never hinged and quite fresh, fine-very fine.

.....Unitrade \$285



167 * #41b 1891 3c Orange Small Queen Imperforate, a mint sheet margin horizontal pair, with full original hinged gum, very fine.

.....Unitrade \$600



168 (*) #41b 1891 3c Rose Vermilion Small Queen Imperforate, an unused (no gum, as issued) block of four, with large margins and very fine.

.....Unitrade \$1,200



- 169 * #41i 1891 3c Deep Rose Carmine Small Queen, mint with full original gum, lightly hinged. The stamp shows bright, fresh colour and large margins, very fine and a gorgeous example of this short-lived Montreal Gazette printing. Accompanied by a 2009 R.P.S.L. certificate.

.....Unitrade \$850



- 170 (*) #42a 1891 5c Grey Small Queen Imperforate, an unused (no gum, as issued) horizontal pair, with a tear running down most of the length of the margin between the two stamps, else very fine.

.....Unitrade \$900



- 171 (*) #43b 1896 6c Red Brown Small Queen Imperforate, an unused (no gum, as issued) sheet margin horizontal pair, showing the plate imprint alongside the whole length of the margin, very fine.

.....Unitrade \$750



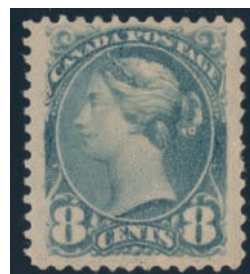
- 172 (*) #43b 1895 6c Brown Red Small Queen Imperforate, an unused (no gum, as issued) single, fine. Catalogue value for a pair would be \$750.

.....Est \$100



- 173 ** #43i 1890 6c Chestnut Small Queen, a mint lower left corner block of eight, with full original gum, with all stamps never hinged except the lower left which is lightly hinged. A fresh block, showing a small part of the plate imprint at lower right, with separation of the left side selvage, which does not detract from the freshness and quality of this block, fine. Accompanied by a 2017 RPSL certificate.

.....Unitrade \$2,000



- 174 * #44a 1893 8c Blue Grey Small Queen, mint with full original hinged gum, very fine.

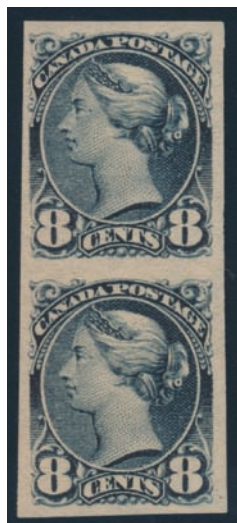
.....Unitrade \$550



- 175 * #44d 1895 8c Blue Grey Small Queen Imperforate, a mint horizontal pair with original hinged gum but with a small thin and a stain which shows through on the right stamp (under chin), else very fine and one of the scarcer imperforate Small Queen issues.

.....Unitrade \$1,000





- 176 (*) #44i 1895 8c Blue Grey Small Queen Imperforate, an unused (no gum, as issued) vertical pair, very fine and a seldom-offered Small Queen imperforate. Ex Brigham.
.....Unitrade \$1,250



- 177 * #45, 45a, 45b 1897 10c Small Queen Group of Shades, all three are mint hinged, with brown red (fine), rose carmine (very fine) and pale salmon pink (fine).
.....Unitrade \$1,450



178

- 178 * #45a 1891 10c Dull Rose Small Queen, mint with full original hinged gum. A well centered stamp with large margins, very fine.
.....Unitrade \$800



179

- 179 * #45b 1895 10c Bright Pink Small Queen, mint with full original hinged gum, very fine and a rarely seen shade.
.....Unitrade \$1,000



- 180 */** #45c 1897 10c Brown Red Small Queen Imperforate with Re-Entry, a mint lower right corner block of four, with full original brownish gum (naturally blotchy in places), bottom stamps never hinged. The upper left stamp (position 89) shows the re-entry in the top frameline, a rare instance as only 10 can exist. There is are very light diagonal gum bends as frequently seen on this issue, else a very fine corner block with large margins. Catalogue value is for two normal pairs only.
.....Unitrade \$2,625



181

- E/P 12½c Small Queen Engraved Die Essay in Blue, on thin hard wove paper measuring 23 x 30 mm, very fine. A rare die essay for a value intended to replace the 12½c Large Queen issue. Illustrated in Hillson and Nixon *Canada's Postage Stamps of the Small Queen Era 1870-1897* on page 29. Ex Gillilan, Brigham, Cantor.
.....Est \$5,000



- 182** **E/P 15c Small Queen Engraved Die Essay in Brown Red**, on India paper measuring 32 x 41 mm, showing guidelines in the margins. There is an insignificant natural wrinkle in the margin at right, which does not detract from the rarity of this item, which was originally prepared and intended to replace the 15c Large Queen issue, very fine. Illustrated in Hillson and Nixon *Canada's Postage Stamps of the Small Queen Era 1870-1897* on page 29. Ex Bill Simpson, Brigham, Cantor.
.....**Est \$5,000**



- 183** **E/P 15c Small Queen Engraved Die Essay in Green**, on India paper measuring 27 x 30 mm, with insignificant natural paper fault on back, very fine. A rare die essay for a value intended to replace the 15c Large Queen issue. Minuse & Pratt E-1a. Ex T.D. McKee.
.....**Est \$5,000**



- 184** *** #46a 1893 20c Brown Orange Widow Weeds Imperforate**, a mint horizontal pair with full original hinged gum, very fine. Ex Brigham.
.....**Unitrade \$1,800**



- 185** *** #47a 1893 50c Deep Violet Blue Widow Weeds Imperforate**, a mint block of four with full original gum, hinged and very fine. Ex Brigham.
.....**Unitrade \$3,600**



x186

- 186** ***/(*) #34/47 Balance of the Mint or Unused Small Queen Issue**, with a nice selection of denominations, unused (no gum or regummed), as well as original hinged gum, with duplication but also shades. We noted #s 40, 40a, 45a, 46 (x2), 47 (x2), some early printings, and more. A valuable group, overall fine with some better.
.....**Scott U\$12,470**





x187

- 187** ◉ **#35/45 Balance of the Used Small Queen Issue**, with a nice selection of issues with shades, including early printings, we noted a row of 7 perf 11½ x 12 (including a pale milky rose lilac) as well as six 10c values, again with shades. Generally fine.

..... **Scott U\$2,008**

Jubilee Issue Scott #50-65



- 188** * **#60 1897 50c Ultramarine Jubilee**, a mint vertical pair from upper right corner of sheet, never hinged, but gum has overall disturbances so catalogued as hinged, fine.

..... **Unitrade \$300**



- 189** **E/P #61P 1897 \$1 Jubilee Plate Proof in Lake**, on card-mounted India paper from top of sheet, fine-very fine and the key value of the Jubilee proofs, as it was printed in smaller quantity (400). An attractive and scarce proof, rarely offered by itself.

..... **Unitrade \$1,500**



- 190** * **#62 1897 \$2 Dark Purple Jubilee**, mint hinged, fine.

..... **Unitrade \$1,000**



- 191** * **#63 1897 \$3 Yellow Bistre Jubilee**, mint hinged, very fine.

..... **Unitrade \$2,000**



- 192** * **#64 1897 \$4 Purple Jubilee**, mint hinged, fine-very fine with lovely colour.

..... **Unitrade \$1,600**



- 193** * **#65 1897 \$5 Olive Green Jubilee**, mint hinged, fine.

..... **Unitrade \$1,200**

Leaf Issues Scott #66-73



- 194** **** #66 1897 1/2c Black Queen Victoria Leaf**, mint never hinged, fresh and well centered among four large margins, extremely fine.
 **Unitrade \$60**



- 195** **(*) #66ii 1897 1/2c Black Queen Victoria Leaf Imperforate**, an unused (no gum, as issued) horizontal pair, very fine.
 **Unitrade \$600**



- 196** **(*) #67i 1897 1c Blue Green Queen Victoria Leaf Imperforate**, an unused (no gum, as issued) sheet margin horizontal pair, very fine.
 **Unitrade \$600**



- 197** **(*) #68i 1897 2c Purple Queen Victoria Leaf Imperforate**, an unused (no gum, as issued) horizontal pair, very fine.
 **Unitrade \$600**



- 198** *** #69a 1898 3c Carmine Queen Victoria Leaf Imperforate**, a mint lightly hinged horizontal pair, fresh and very fine. An elusive Leaf issue imperforate.
 **Unitrade \$1,200**



- 199** **(*) #70i 1897 5c Dark Blue Queen Victoria Leaf Imperforate on Horizontal Wove Paper**, an unused (no gum, as issued) upper marginal horizontal pair, extremely fine.
 **Unitrade \$600**



- 200** *** #71a 1897 6c Brown Queen Victoria Leaf Imperforate**, a mint hinged sheet margin horizontal pair, very fine.
 **Unitrade \$1,000**

SPARKS
 ★ AUCTIONS

We are always seeking nice material for our sales. Contact Stéphane to discuss your consignments to our future auctions.

stephane@sparks-auctions.com





- 201 **E/P #72DP 8c Queen Victoria Leaf Large Die Proof in Orange**, sunk-in on card measuring 88 x 88 mm, with die number F-108 and ABN inscription below stamp design. Light abrasion at upper left plus a few tiny stains, still a scarce and very fine appearing die proof.
..... Unitrade \$5,000



- 202 *** #72a 1897 8c Orange Queen Victoria Leaf Imperforate on Horizontal Wove Paper**, a mint hinged upper marginal horizontal pair, with naturally short gum at top, very fine.
..... Unitrade \$1,000



- 203 *** #72a 1897 8c Orange Queen Victoria Leaf Imperforate on Horizontal Wove Paper**, a mint lightly hinged horizontal pair, very fine.
..... Unitrade \$1,000



- 204 *** #73a 1897 10c Reddish Brown Violet Queen Victoria Leaf Imperforate on Horizontal Wove Paper**, a mint hinged horizontal pair, tiny corner crease in margin at upper left and small light stain in lower right corner margin, else very fine.
..... Unitrade \$1,000

Numeral Issues Scott #74-84



- 205 **(*) #74iv 1898 1/2c Black Queen Victoria Numeral Imperforate on Horizontal Wove Paper**, an unused (no gum, as issued) horizontal pair, very fine.
..... Unitrade \$500



- 206 **(*) #75vi 1898 1c Paler Green Queen Victoria Numeral Imperforate on Vertical Wove Paper**, an unused (no gum, as issued) lower left corner horizontal pair, very fine.
..... Unitrade \$900



- 207 **** #77 1899 2c Carmine Queen Victoria Numeral, Die I**, mint never hinged, quite fresh and very fine.
..... Unitrade \$270



- 208 (*) #77d 1899 2c Carmine Queen Victoria Numeral Die II Imperforate on Horizontal Wove Paper, an unused (no gum, as issued) marginal horizontal pair, very fine. An elusive Numeral imperforate, much scarcer than the Die I printing.
.....Unitrade \$1,500



- 209 (*) #79ii 1899 5c Blue Queen Victoria Numeral Imperforate on Bluish Horizontal Wove Paper, an unused (no gum, as issued) horizontal pair, very fine.
.....Unitrade \$900



- 210 * #80a 1898 6c Brown Queen Victoria Numeral Imperforate, a mint hinged sheet margin horizontal pair, very fine.
.....Unitrade \$1,500



- 211 (*) #81a 1902 7c Olive Yellow Queen Victoria Numeral Imperforate, an unused (no gum, as issued) horizontal pair, very fine.
.....Unitrade \$800



- 212 ** #82a 1898 8c Brown Orange Queen Victoria Imperforate, a mint never hinged horizontal pair, very fine and scarce. Accompanied by a 2021 Greene Foundation certificate.
.....Unitrade \$3,750



- 213 (*) #82ii 1898 8c Orange Queen Victoria Numeral Imperforate on Vertical Wove Paper, an unused (no gum, as issued) lower left corner horizontal pair, very fine.
.....Unitrade \$900



- 214 * #83a 1898 10c Deep Brown Violet Queen Victoria Numeral Imperforate, a mint lightly hinged upper right corner horizontal pair, very fine.
.....Unitrade \$1,500





- 215** E/P #84TCDP 20c Queen Victoria Numeral Trial Colour Die Proof in Lime Green, a distinctive shade, in stamp size on card-mounted India paper, very fine and rare.
..... Est \$500



x216

- 216** * #74-84, 79b 1898-1902 ½c to 20c Queen Victoria Numeral Set, mint hinged and includes the white paper 5c. All are very fine except for the ½c and 3c, which are fine.
..... Unitrade \$3,595

Imperial Penny Postage



- 217** (*) #85a 1898 2c Lavender Map Stamp Imperforate, an unused (no gum, as issued) horizontal pair, fresh and very fine.
..... Unitrade \$700

King Edward VII Era Quebec Tercentenary Scott #96-103



Detail Lot 218

- 218** E/P #96DP ½c Québec Tercentenary Large Die Essay in Black Brown, showing the King in civilian attire (adopted design shows the King in military uniform). Printed on India paper die-sunk on larger card measuring 172 x 107 mm, with die number F-172 and ABN inscriptions under the stamp design. A very fine, rare (only 6 known) and desirable die essay for the specialist. Minuse & Pratt 96E-Aa.
..... Est \$2,500



Detail Lot 219

- 219** E/P #96DP ½c Québec Tercentenary Large Die Proof in Black Brown, on India paper, die-sunk on larger card measuring 105 x 90 mm, with die number F-199 and ABN inscriptions under the stamp design. A very fine large die proof of the approved design. Minuse & Pratt 96P1a.
..... Est \$750



x220

- 220** ***/** #96-103 1908 ½c to 20c Québec Tercentenary Set**, mint never hinged except for the 5c and 10c which are hinged, the ½c has a small inclusion on gum, rest are fine to very fine.

.....**Est \$350**



Detail Lot 221

- 221** **E/P 1914 1c MacDonald Cartier Large Die Essay**, in deep blue green, printed on India paper die-sunk on larger card measuring 148 x 125 mm. Die number G-O-56 appears above the stamp design. A rare and very fine large die essay, for a design that was never issued. Minuse & Pratt E-1a.

.....**Est \$1,500**

Subscribe To Our Mailing List

Are you getting announcements of future auction dates and other important news?

We send out e-mails fewer than a dozen times a year, so you will only get reminders about upcoming sales, and important information on what's new with us. We will be glad to sign you up, just send us an e-mail with your address.

You can also manage your own mailing list subscription on our site. Go to sparks-auctions.com and look for the menu link under About Us. If you have chosen "don't send me e-mails" in your Stamp Auction Network account, or you have unsubscribed to the mailing list in the past, we cannot change your settings for you, and you will have to follow the link to do so yourself.



Detail Lot 222

- 222** **E/P 1914 2c MacDonald Cartier Large Die Essay**, with caption reading "Le Monument Cartier", printed in red on India paper, die-sunk on larger card measuring 147 x 124 mm. Die number G-O-50 appears above the stamp design. A rare and very fine large die essay, for a design that was never issued. Minuse & Pratt E-2a.

.....**Est \$1,500**

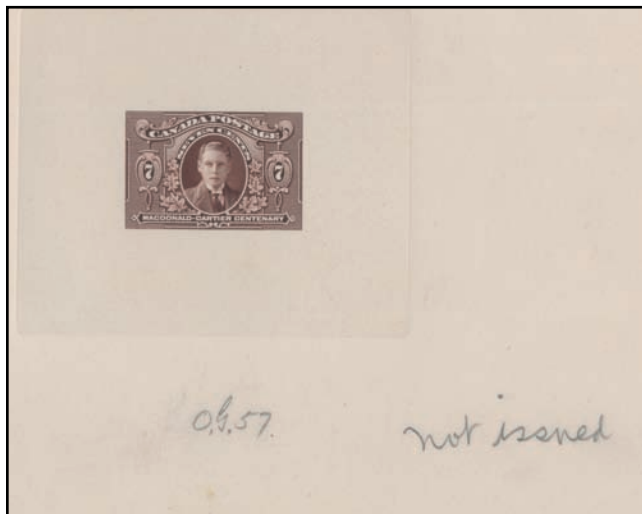


Detail Lot 223

- 223** **E/P 1914 5c MacDonald Cartier Large Die Essay**, with caption reading "Maison où Naquit Cartier", printed in blue on India paper, die-sunk on larger card measuring 149 x 124 mm. Die number G-O-51 appears above the stamp design. A rare and very fine large die essay, for a design that was never issued. Minuse & Pratt E-3a.

.....**Est \$1,500**





Detail Lot 224

- 224 E/P 1914 7c MacDonal Cartier Large Die Essay**, printed in brown on India paper (without die number), die-sunk on larger card measuring 230 x 150 mm. There is a pencil inscription on the card reading "O.G. 57. Not issued". A rare and very fine large die essay, for a design that was never issued. Minuse & Pratt E-4c.
.....**Est \$1,500**



Detail Lot 226

- 226 E/P 1914 20c MacDonal Cartier Large Die Essay**, with caption reading "All Aboard for the West", printed in grey green on India paper, die-sunk on larger card measuring 151 x 127 mm. Die number G-O-58 appears above the stamp design. A rare and very fine large die essay, for a design that was never issued. Minuse & Pratt E-7ba.
.....**Est \$1,500**



Detail Lot 225

- 225 E/P 1914 10c MacDonal Cartier Large Die Essay**, with caption reading "Le Pont Victoria", printed in deep olive green on India paper (without die number), die-sunk on larger card measuring 125 x 112 mm. A rare and very fine large die essay, for a design that was never issued. Minuse & Pratt E-5a.
.....**Est \$1,500**

King George V Era Admiral Issues Scott #104-140



- 227 */** #123-124 1913 1c and 2c Carmine Admiral Coils, Perforated 8 Horizontally**, each value is in a mint pair, the 1c is never hinged and the 2c has a small hinge spot on lower stamp, fine-very fine.
.....**Unitrade \$960**



- 228 ** #123i-124i 1913 1c and 2c Carmine Admiral Paste-Up Coil Pairs, Perforated 8 Horizontally, each value is mint never hinged and fine-very fine.
.....Unitrade \$1,500



- 229 ** #133 1924 2c Yellow Green Admiral Coil, Perforated 12 Horizontally, mint never hinged, fresh and well centered, very fine.
.....Unitrade \$300



x230

- 230 ** #136-138 1924 1c to 3c Admiral Imperforates, all three values in mint never hinged horizontal pairs, the 2c is an enormous jumbo pair and the 3c is a lathework Type D pair with plate imprint, very fine.
.....Unitrade \$520



- 231 ** #MR3a 1916 2c + 1c Carmine Admiral War Tax, Die II, a mint never hinged block of four, bottom stamps have a slight wrinkle at bottom, still overall fine.
.....Unitrade \$1,200

Confederation Series Scott #135, 141-148



- 232 (*) #135a 1917 3c Brown Fathers of Confederation Imperforate, an unused (no gum, as issued) horizontal pair, very fine.
.....Unitrade \$800



x233

- 233 (*) #141b-145b 1927 1c to 12c 60th Anniversary of Confederation Set, Imperforate Vertically, all in sheet margin horizontal pairs, unused (no gum) and very fine.
.....Unitrade \$800



x234

- 234 ** #146a-148a 1927 5c to 20c Historical Issue Set, Imperforate, all three values are in mint never hinged horizontal pairs, quite fresh and very fine.
.....Unitrade \$720



Scroll Issue Scott #149-161



- 235 ** #149cvi 1928 1c Orange King George V Scroll Imperforate Narrow Gutter Tête-Bêche Horizontal Pair, mint never hinged, with sulphuretted colour but very fine.
.....Unitrade \$750



x236

- 236 ** #149d-159b 1928-29 1c to \$1 King George V Scroll Set, Imperforate Vertically, all in mint never hinged horizontal pairs, the 10c and 50c being sheet marginal pairs. The 1c pair is sulphuretted and the 5c has a natural tiny inclusion, else quite a fresh and very fine set.
.....Unitrade \$5,325



x237

- 237 */** #149d-159b 1928-29 1c to \$1 King George V Scroll Set, Imperforate Vertically, all in mint horizontal pairs, the 10c to \$1 high values are in marginal pairs. The 1c, 3c, and 10c to \$1 are lightly hinged, rest never hinged. The 1c pair is somewhat sulphuretted else quite a fresh and very fine set.
.....Unitrade \$3,850



- 238 ** #150cvi 1928 2c Green King George V Scroll Imperforate Narrow Gutter Tête-Bêche Horizontal Pair, mint never hinged, very fine.
.....Unitrade \$750



- 239 ** #153cvi 1928 5c Deep Violet King George V Scroll Imperforate Narrow Gutter Tête-Bêche Horizontal Pair, mint never hinged, right stamp has light gum disturbance, still very fine.
.....Unitrade \$750

Arch-Leaf Issue Scott #162-183



- 240 * #173a 1930 10c Olive Green Library of Parliament Imperforate, a mint hinged horizontal pair from bottom of sheet, very fine and scarce, with only 50 pairs recorded.
.....Unitrade \$2,000



x241

- 241 (*) #174a-177a 1930 12c to \$1 King George V Arch High Value Imperforates, all four values are without gum, three have sheet margins, all fresh and very fine. A scarce group, with only 75 pairs recorded for each value. Unitrade catalogue value for mint hinged is \$5,000.
.....Est \$1,000

Medallion Issue etc. Scott #184-210



- 242** **** #190a 1931 10c Dark Green George-Étienne Cartier Imperforate**, a mint never hinged horizontal pair, with gum disturbance else very fine.

..... **Unitrade \$1,300**



x243

- 243** **** #195c-200a 1932 1c to 8c King George V Medallion Imperforates**, with all six values in mint never hinged horizontal pairs, the 1c to 3c were printed on rotary press, a very fine and fresh set.

..... **Unitrade \$4,200**



- 244** *** #201a 1932 13c Dull Violet Quebec Citadel Imperforate**, a mint lightly hinged horizontal pair, from lower right corner of sheet, fresh and very fine.

..... **Unitrade \$1,000**



- 245** **** #202a 1933 5c Dark Blue U.P.U. Meeting Imperforate**, a mint never hinged marginal vertical pair, very fine with only 75 pairs known.

..... **Unitrade \$1,600**



- 246** **** #203a 1933 20c Brown Red Grain Exhibition Imperforate**, a mint never hinged vertical pair, fresh and very fine. Only 75 pairs recorded.

..... **Unitrade \$1,600**





- 247 **** #204a 1933 5c Dark Blue Royal William Imperforate**, a mint never hinged vertical pair, with overall gum glazing, still very fine and scarce, with only 75 pairs recorded.
 Unitrade \$1,600



- 248 **** #208a 1934 3c Blue Jacques Cartier Imperforate**, a mint never hinged horizontal pair, very fine and quite fresh. Ex "Baron" collection (2016).
 Unitrade \$1,600



- 249 **** #209a 1934 10c Olive Green Loyalists Statue Imperforate**, a mint never hinged sheet margin vertical pair, very fine and quite scarce, with only 50 pairs known. Ex "Baron" collection (2016).
 Unitrade \$3,500



- 250 *** #210aii 1934 2c Red Brown New Brunswick Seal Imperforate with "Closed Frameline"** on the right stamp of a very lightly hinged sheet margin horizontal pair, very fine. Only 35 such pairs are known. Ex "Baron" collection (2016).
 Unitrade \$1,750

Silver Jubilee Issue Scott #211-216



- 251 **E/P #216P 13c Royal Yacht Britannia Plate Proof in Dark Blue**, a horizontal pair on card-mounted India paper, very fine.
 Unitrade \$350

Pictorial Issue Scott #217-230



x252

- 252 **** #217c-227a 1935 1c to \$1 King George V Pictorial Set, Imperforate**, all in mint never hinged pairs, horizontal up to the 8c and vertical from 10c to the \$1, with six values having sheet margins. The 1c value has a small spot on its gum, else a fresh and very fine set and ex "Baron" collection (2016).
..... **Unitrade \$4,200**



Detail Lot 253

- 253 **E/P #226TCDP 50c Victoria Parliament Trial Colour Die Proof in Deep Violet**, on India paper measuring 75 x 65 mm, with die number XG-583 and CBN Co imprint below the stamp image. A very fine die proof, apparently the scarcest of all the known trial colours.
..... **Est \$500**

King George VI to Queen Elizabeth II era



x254

- 254 *** #241b-245b 1938 10c to \$1 Pictorial Set, Imperforate**, with all six values (includes the two shades of the 10c) in sheet margin pairs (both 10c horizontal, rest vertical), with three values being corner pairs. Mint hinged (with remnants) and very fine.
..... **Unitrade \$4,750**



Detail Lot 255

- 255 **E/P #245TCDP \$1 Château de Ramezay Trial Colour Large Die Proof in Blue**, on India paper die-sunk onto a card measuring 129 x 115 mm, with die number XG-679 and CBN Co imprints below the stamp image. A rare and desirable item, very fine.
..... **Est \$750**





x256

- 256 **** #249d-262a 1942-43 1c to \$1 King George V War Set, Imperforate**, all values in mint never hinged pairs (either vertical or horizontal), 12 of the values have sheet margins, quite fresh and very fine. An exceptional set, rarely seen in such quality.
 Unitrade \$10,500



x257

- 257 **** #468Ac/1194v Group of Ten Definitive Issues in Imperforate Pairs**, with #s 468Ac (small gum defect at top), 604a, 605v, 729a, 730a, 806a, 951a, 952a, 953a and 1194v. All mint never hinged, very fine.
 Unitrade \$2,300

Back of the Book – Airmails Scott #C1-CE4



- 258 **(*) #C1a 1928 5c Brown Olive Airmail Imperforate**, an unused (no gum) vertical pair, very fine.
 Unitrade \$350



- 259 *** #C1b 1928 5c Brown Olive Airmail, Imperforate Vertically**, a mint hinged (hr) horizontal pair, very fine.
 Unitrade \$350

Back of the Book – Registration Scott #F1-F3



- 260 * #F3a 1876 8c Bright Blue Registration, mint with full original gum, with tiny internal wrinkle, else with deep rich colour and very fine.

Unitrade \$1,000



x261

- 261 * #F1-F3 1875-76 2c to 8c Registration Mint Group, all with original gum, with Unitrade #s F1 (two shades, one with the scarcer dull gum), F1a, F1i, F2 (two shades, one without gum), F2a and F3. There are a few short perfs, else catalogued as all fine hinged, even though a few are better centered.

Unitrade \$1,015



x262

- 262 ☉ #F1-F3 1875-76 2c to 8c Registration Used Group, with Unitrade #s F1 (x5, with shades), F1b, F2 (x5, with shades), F2a (x2), and F3 (very fine with oval cancel). Centering ranges from fine to very fine, a useful group.

Est \$200

Proud partner sponsor of



x263

- 263 */** Balance of the Mint Canada Collection, 1897 to 1951, quite complete in period, including Jubilees to the \$1 (the 50c is used), and virtually complete thereafter, with extra shades and printings, some multiples, all coils (in singles or pairs), etc. Also includes back of the book, with airmails, special delivery, postage dues, officials and officially sealed stamps (OX1 and OX2 are used). Condition is generally fine or better. We noted some never hinged material, but also some unused (no gum or regummed) stamps, so we counted all as hinged. Also includes a number of duplicates in stock cards (these not counted). All pages of this valuable collection are scanned online.

Scott U\$27,755



British Columbia and Vancouver Island



- 264 (*) #2, 2a 1860 2½d Dull Rose and Pale Dull Rose Queen Victoria Issues, Perforated 14, both of the listed shades, unused (no gum) very good.
.....Unitrade \$400



265

- 265 ☉ #4 1865 10c Blue Queen Victoria Imperforate, used with Victoria oval cancel in blue plus part of a London receiver or transit in red, margins are just clear to large, fine.
.....Unitrade \$1,000



266

- 266 * #5 1865 5c Rose Queen Victoria, Perforated 14, mint with original hinged gum, very good.
.....Unitrade \$625



267

- 267 * #5 1864 5c Rose Queen Victoria, Perforated 14, mint with full original hinged gum, very good.
.....Unitrade \$625



268

- 268 * #6 1865 10c Blue Queen Victoria, Perforated 14, mint with original lightly hinged gum, fine.
.....Unitrade \$1,250



269

- 269 * #6 1865 10c Blue Queen Victoria, Perforated 14, mint with original lightly hinged gum, very good.
.....Unitrade \$625



270

- 270 * #7a 1865 3d Pale Blue Seal of British Columbia, mint with full original gum, lightly hinged and fine.
.....Unitrade \$270



271

- 271 * #9 1867 5c on 3d Bright Red Seal of British Columbia Surchage, Perforated 14, mint with original hinged (hr) gum, fresh and fine.
.....Unitrade \$500



272

- 272 * #10 1867 10c on 3d Lilac Rose Seal of British Columbia Surchage, Perforated 14, mint with original very lightly hinged gum, short perf at top, still fresh and fine, signed by Alberto Diena.
.....Unitrade \$3,600



273

- 273 * #11 1867 25c on 3d Orange Seal of British Columbia Surchage, Perforated 14, mint with original lightly hinged gum, fine.
.....Unitrade \$600



274

- 274 ☉ #11 1867 25c on 3d Orange Seal of British Columbia Surchage, Perforated 14, used with #36 in grid cancel from Victoria, fine.
.....Unitrade \$300



275



276

- 275 (*) #12 1867 50c on 3d Violet Seal of British Columbia Surcharge, Perforated 14, unused (regummed), with bright colour, fine.

.....Unitrade \$900

- 276 (*) #12i 1867 50c on 3d Violet Seal of British Columbia Surcharge, Perforated 14, with Inverted Watermark, unused (no gum), with bright colour and clear watermark, fine.

.....Unitrade \$1,500



277



278

- 277 * #16 1869 25c on 3d Orange Seal of British Columbia Surcharge, Perforated 12½, mint with original lightly hinged gum, fresh and fine.

.....Unitrade \$1,500

- 278 * #17 1869 50c on 3d Violet Seal of British Columbia Surcharge, Perforated 12½, mint with original hinged gum, fine.

.....Unitrade \$2,400



279



280

- 279 * #18 1869 \$1 on 3d Green Seal of British Columbia Surcharge, Perforated 12½, mint with original hinged gum, still retaining many of its perforation disks, tiny bit of gum soaking at top right, still fine.

.....Unitrade \$3,600

- 280 ☉ #18 1869 \$1 on 3d Green Seal of British Columbia Surcharge, perforated 12½, used with a neat corner numeral grid cancel in blue, still retaining many of its perforation disks, very fine.

.....Unitrade \$2,200



x281



- 281 */(*) #2/15 Balance of the Mint or Unused British Columbia and Vancouver Island Collection, with #s 2 (x2), 7 (x5), 8 (x2), 9, 11, 13 and 15. Mixed condition, mostly unused (no gum or regummed), still a useful group.

.....Scott U\$6,340



x282

- 282 ☉ #2/9 Balance of the Used British Columbia and Vancouver Island Collection, with #s 2, 7, 8 (x3) and 9 (x3), in mixed condition but still a decent group.

.....Scott U\$1,550

New Brunswick Pence



- 283 E/P #1P 6d Heraldic Trial Colour Plate Proof in Black, on card with four large margins, with the top tip showing what may be a small part of the "SPECIMEN" overprint sometimes found on these, very fine.

.....Unitrade \$500

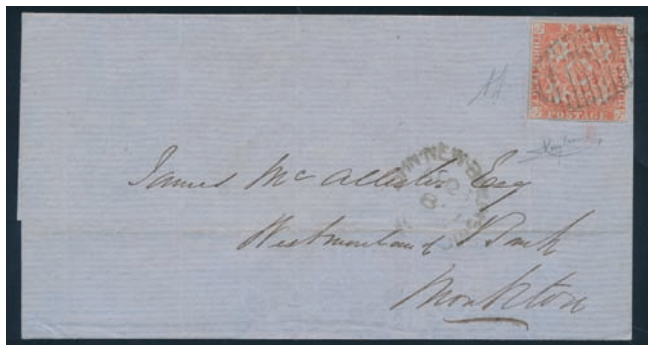




- 284** ☉ **#1 1851 3d Red Heraldic Imperforate**, used with crisp strike of an oval grid, three large margins, one showing part of next stamp plus another which is clear, very fine. Accompanied by a 1954 B.P.A. certificate.
Unitrade \$700



- 285** ☉ **#1 1851 3d Red Heraldic Imperforate**, used with crisp strike of an oval grid, with four ample to large margins, very fine. Accompanied by an undated Paul Alcuri (Canterbury) certificate.
Unitrade \$700



- 286** ✉ **#1 3d Red Heraldic Imperforate on 1859 Folded Cover**, mailed from St John's New Brunswick to Moncton, through Little Petticodiac. The folded letter is franked with a fine-very fine 3d imperforate, with bright colour and well tied by a neat "1" in oval grid cancel, very fine. Signed in pencil on front by Alberto Diena and Luigi Raybaudi, and accompanied by a 1978 certificate from the latter. A nice, clean cover.
Unitrade \$800



- 287** ☉ **#2 1851 6d Olive Yellow Heraldic Imperforate**, used with an almost complete, crisp strike of the Chatham 8 in oval grid cancel in blue (RF 5), the stamp has four large margins and bright colour, extremely fine and a very nice stamp in all respects. Accompanied by a 2021 Greene Foundation certificate.
Unitrade \$1,600



- 288** ☉ **#2a 1851 6d Orange Yellow Heraldic Imperforate**, used with "PAID" cancel in red, the stamp has four large to huge margins, showing part of the next stamp on one side, extremely fine and a lovely stamp which will satisfy the most discriminating collector. Accompanied by a 1977 R.P.S.L. and 2021 Greene Foundation certificates.
Unitrade \$1,600



- 289 E/P #3P 12d Heraldic Trial Colour Plate Proof in Black, on yellowish card, with four large margins, very fine.
.....Unitrade \$800



- 290 Ⓢ #3 1851 12d Bright Red Violet Heraldic Imperforate, used with light oval grid cancel, with bright colour and four large to well clear margins. There is a very light pressed-out crease (barely visible only in fluid), else a fine-very fine stamp. Accompanied by a 1962 Alberto Dena certificate (with his pencil signature on stamp) and a 2021 Greene Foundation certificate.
..... Unitrade \$6,000

New Brunswick Cents



- 291 E/P #5TC 5c Connell Trial Colour Plate Proof in Orange, on card-mounted India paper, very fine.
.....Unitrade \$500



- 292 E/P #5P 5c Connell Trial Colour Plate Proofs in Dark Brown and Pale Brown, both on India paper, very fine.
.....Unitrade \$600



- 293 E/P #5Piv 5c Connell Plate Proof in Dark Red Brown, with Type B SPECIMEN Overprint, a horizontal pair on India paper, very fine.
.....Unitrade \$500



- 294 E/P #6E 1c Locomotive Goodall Trial Colour Die Essay in Yellow Brown, on India paper measuring 28 x 24 mm. An unadopted design, showing the locomotive facing left, as well as the lettered numerals "One" at lower corners. An impressive and very fine item for the specialist. Minuse & Pratt 6E-Ag.
..... Est \$750



- 295 E/P #6DP 1c Locomotive Goodall Trial Colour Die Proof in Black, on India paper die sunk on card measuring 45 x 42 mm, with "130" above the stamp image, very fine and rare. Ex. Ron Saint (2000).
..... Est \$750





- 296 **E/P #6DP 1c Locomotive Goodall Trial Colour Die Proof in Blue Green**, on India paper measuring 31 x 26 mm, with "130" above the stamp image. A few toning spots, still very fine and rare.
..... **Est \$750**



- 297 **E/P #6P 1c Locomotive Unlisted Plate Proof Group of Three**, all three singles on India paper, first is in red lilac and has a diagonal straightline SPECIMEN perfin (small thin), second in black with diagonal SPECIMEN overprint in red (different font than listed Types) and third is in violet, with same overprint but vertical. A rare offering.
..... **Est \$500**



x298

- 298 **E/P #6P, etc. 1c Locomotive Plate Proof Group**, all on India paper except where noted, with 6P (mounted on card), Pii, Piii, Piv (mounted on card), TC and TCii (on hard bond paper). A very fine group of six different.
..... **Unitrade \$925**



x299

- 299 **E/P #6P, etc. 1c Locomotive Plate Proof Group**, all on India paper, with 4 items: 6P (a horizontal pair mounted on card, plus a single), Pii and Piv (sheet margin single mounted on card). A very fine group.
..... **Unitrade \$625**



x300

- 300 **E/P #7P, etc. 2c Queen Victoria Plate Proof Group**, all on India paper, some card-mounted, with 7P (a pair and two singles of different shades), TC (a pair and two singles of slightly different shades), TCi (single) and TCii (two slightly different singles). A very fine group.
..... **Unitrade \$830**



x301

- 301 **E/P #8P, etc. 5c Queen Victoria Plate Proof Group**, all on India paper, some are card-mounted, with 8P (one pair and three singles of different shades), Pii (sheet margin block of four), TC (single) and TCi (single with small, but clear margins). A very fine group.
..... **Unitrade \$685**



- 302 **E/P #9DP 10c Queen Victoria Die Proof in Orange**, on India paper measuring 36 x 31 mm, without the guidelines or imprints normally found on the Goodall die proofs, yet just as scarce and desirable, very fine.
..... **Est \$750**



- 303 E/P #9TC 10c Queen Victoria Trial Colour Plate Proof in Orange, on India paper, very fine.
.....Unitrade \$300



x304

- 304 E/P #9P, etc. 10c Queen Victoria Plate Proof Group, all on India paper, some are card-mounted, with 9P (a pair and a single), Pii (a pair and a single), Piii (single) and Piv (sheet margin single). All very fine.
.....Unitrade \$580



- 305 E/P #10DP 12½c Steamship Group of Four Different Trade Sample Proofs, printed on wove paper by the American Bank Note Co. in orange, brown red, straw yellow, and dull violet. A very fine and scarce group.
.....Unitrade \$1,000



x306

- 306 E/P #10P, etc. 12½c Steamship Group of Plate Proofs, all on India paper, some are card-mounted, with 10P (a pair and two singles in pale blue, plus a sheet margin single in dark blue), 10Pi (two different shades), 10Pii and 10Piii. A very fine group.
.....Unitrade \$660



- 307 E/P #10Pii, Piii, Piv 12½c Steamship Plate Proof in Blue, with Type B, C and D SPECIMEN Overprints in Red, a sheet margin block of 12, on card-mounted India paper, top row has Type D, second row has Type B and rest have Type C overprints, fresh and very fine.
.....Unitrade \$2,000





- 308 E/P #10Pii 12½c Steamship Plate Proof in Dark Blue, with Type B SPECIMEN Overprint in Red, an upper sheet margin block of four, on card-mounted India paper, showing an interesting jump in the application of the SPECIMEN overprint, very fine.

Unitrade \$280



x309

- 309 E/P #11P, etc. 17c Prince of Wales Group of Plate Proofs, all on India paper, with 11P (a horizontal pair and two singles, all card-mounted), Pi, Pii (a very fine strip of three plus a fine single) and TC. A very fine group.

Unitrade \$720



x310

- 310 */**/(*) #6-10 1860 1c to 17c Cents Issue Set, includes a basic mint set, plus extra mint shades and copies of the 3 lower values, with 1c (x3, 2 are NH), 2c (x3 singles, either hinged or without gum, plus a NH block of four with a few small gum issues), 5c (NH block of four and single, plus two without gum), and a NH 10c, 12½c and 17c. Overall fine to very fine and catalogue value is for the least expensive shades.

Scott U\$1,250



x311

- 311 ☉/* #1/11 Balance of the Mint and Used New Brunswick Collection, with #s 1 (x2 used), 6 (x2 no gum), 6a (2x used and 1x no gum), 7 (2x used and a mint block of 10), 8 (x5 used), 9 (one each used and mint hinged), 10 (one each used and mint no gum) and 11 (one used and 2 no gum). Also includes a group of 6 plate proof singles, including 9Pii, 9Piii, 9TC, etc. (a few are sulphuretted). Mixed condition but with many fine stamps.

Scott U\$3,135

Nova Scotia Pence



- 312 E/P #1P 1d Queen Victoria Plate Proof in Black, an upper left corner block of four, printed on card, very fine and rare in such a multiple.

Unitrade \$2,600



313

- 313 ⦿ **#1 1853 1d Red Brown Queen Victoria Imperforate**, used with three large margins plus one close but not touching, with pen writing on back, fine.
Unitrade \$350



314

- 314 ⦿ **#1 1853 1d Red Brown Queen Victoria Imperforate**, used with light grid cancel, four close but clear margins, fine.
Unitrade \$350



- 315 ⦿ **#2 1857 3d Blue Heraldic Imperforate**, used with light grid cancel, four large to huge margins, very fine.
Unitrade \$300



- 316 ⦿ **#2b 1857 3d Pale Blue Heraldic Imperforate**, used with light grid cancel, margins are well clear all around, fine-very fine.
Unitrade \$262



317

- 317 ⦿ **#3 1851 3d Dark Blue Heraldic Imperforate, on Bluish Paper**, used with grid cancel and four large margins, very fine.
Unitrade \$400



318

- 318 **E/P #4P 6d Heraldic Plate Proof in Black**, a right sheet margin pair printed on card, very fine and scarce.
Unitrade \$800



319

- 319 ⦿ **#4 1851 6d Yellow Green Heraldic Imperforate**, used with neat oval grid cancel, the stamp has three large to well clear margins plus one that is close but clear, fine-very fine. Accompanied by a 2021 Greene Foundation certificate.
Unitrade \$850





- 320** ☉ **#5 1857 6d Dark Green Heraldic Imperforate**, used with oval grid cancel, margins are large to clear, small corner crease, else fine-very fine. Accompanied by a 2021 Greene Foundation certificate.
 **Unitrade \$2,000**



- 321** **E/P #6P 1sh Heraldic Plate Proof in Black**, printed on card, very fine and scarce.
 **Unitrade \$850**



- 322** ☉ **#6 1857 12d Reddish Violet Heraldic Imperforate**, used with light grid cancels, margins are mostly close, to touching on one side, fine.
 **Unitrade \$3,500**



- 323** (*) **#7 1851 12d Dull Violet Heraldic Imperforate**, unused (no gum), three margins are well clear and fourth just touches, fine. A scarce stamp. Accompanied by 1961 R.P.S.L. and 2021 Greene Foundation certificates.
 **Unitrade \$4,000**



- 324** **#7R 1890 1sh Pence Issue Reprint in Violet Black**, a block of four on thin hard paper, very fine. These were printed in 1890 on the authority of Mr. Haggart, Postmaster General of Canada and the plate subsequently destroyed.
 **Est \$150**



x325

- 325 **#1R/7R 1890 1d to 1sh Set of Pence Issue Reprints**, all in singles on thin hard paper, very fine. These were printed in 1890 on the authority of Mr. Haggart, Postmaster General of Canada and the plate subsequently destroyed.
.....Unitrade \$500

Nova Scotia Cents



- 326 **E/P #8DP 1c Queen Victoria Die Proof in Black**, on India paper measuring 30 x 45 mm, with "American Bank Note Co. 95" imprint at bottom, very fine.
.....Est \$500



- 327 **E/P #8TCix 1c Queen Victoria Trial Colour Plate Proof in Dark Green, with Type D SPECIMEN Overprint in Red**, a horizontal pair on India paper, very fine.
.....Unitrade \$360



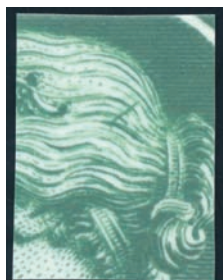
x328

- 328 **E/P #8TCii/iii/iv 1c Queen Victoria Trial Colour Plate Proof in Vermillion, with Types A to D SPECIMEN Overprints in Green**, a nice group which includes a single with Type A (on India), as well as two plate blocks of four, one with Types C and D (card-mounted India) and one with Types B and D (on India). Very fine.
.....Unitrade \$1,300



- 329 **E/P #8TCviii 1c Queen Victoria Trial Colour Plate Proof in Dark Green, with Type C SPECIMEN Overprint in Red**, a lower sheet margin plate block of four on India paper, showing the complete imprint in the bottom margin, very fine.
.....Unitrade \$300





- 330 **E/P #8TCv 1c Queen Victoria Trial Colour Plate Proof in Dark Green**, with two items: a block of four on India paper, as well as a lower left corner single on India paper showing a prominent plate scratch in the Queen's hair, with several unburnished guidelines in the left margin, a very fine group.
.....Unitrade \$600



- 331 **E/P #8TCx/xi 1c Queen Victoria Trial Colour Plate Proofs in Dark Violet and Orange**, each in a block of four on India paper, very fine.
.....Unitrade \$880



- 332 **E/P #8P 1c Queen Victoria Plate Proof in Black**, a plate block of four on India paper, showing the complete imprint in the right margin, very fine.
.....Unitrade \$300



- 333 **E/P #8Pi 1c Queen Victoria Plate Proof in Black, with Type A SPECIMEN Overprint in Red**, a block of four on card-mounted India paper, very fine.
.....Unitrade \$240



- 334 **E/P #8Pii 1c Queen Victoria Plate Proof in Black, with Type B SPECIMEN Overprint in Red**, an upper left corner plate strip of four on card-mounted India paper, showing the complete imprint in the top margin, very fine.
.....Est \$100





- 335 **E/P #8Pii/iii 1c Queen Victoria Plate Proof in Black, with Types B and C SPECIMEN Overprints in Red**, a sheet margin vertical plate strip of four on card-mounted India paper, showing the complete imprint in the right margin, and showing three Type B and one Type C overprints, very fine.
 **Est \$100**



- 336 **E/P #8Pv 1c Queen Victoria Plate Proof in Black, with Type B SPECIMEN Overprint in Gold**, a block of four on India paper, showing the usual faded overprint, very fine and rare, as only 100 are believed to exist, many having thins.
 **Unitrade \$1,600**



- 337 **E/P #8TSP 1c Queen Victoria Trade Sample Proof in Brown Red**, in stamp size on thin hard wove paper, very fine and scarce.
 **Unitrade \$200**



x338

- 338 **E/P #9TC 2c Queen Victoria Trial Colour Plate Proof in Grey**, with two items: a lower sheet margin plate block of four on India paper, showing the complete imprint in the bottom margin, as well as a single, very fine.
 **Unitrade \$540**





339 E/P #9TCi 2c Queen Victoria Trial Colour Plate Proof in Orange, a block of four on card-mounted India paper, very fine.

.....Unitrade \$360



341 E/P #9P 2c Queen Victoria Plate Proof in Lilac, a block of four on India paper, very fine.

.....Unitrade \$400



340 E/P #9TCii 2c Queen Victoria Trial Colour Plate Proof in Dark Slate Violet, with Type A SPECIMEN Overprint in Red, an upper right corner plate block of six on card-mounted India paper, showing the complete imprint in the right margin, very fine.

.....Unitrade \$350



342 E/P #10TC 5c Queen Victoria Trial Colour Plate Proof in Black, a plate block of four on India paper, showing the complete imprint in top margin, very fine.

.....Unitrade \$500



- 343 **E/P #10TCDP 5c Queen Victoria Trial Colour Die Proof in Black**, on India paper measuring 33 x 41 mm, very fine.
..... **Est \$500**



- 344 **E/P #10TCDP 5c Queen Victoria Trial Colour Die Proofs in Vermillion and Brown Red**, both in stamp size, vermillion on thin hard wove paper, while the brown red is on India paper, both very fine and scarce.
..... **Unitrade \$400**



- 345 **E/P #10TCi 5c Queen Victoria Trial Colour Plate Proof in Black, with Type A SPECIMEN Overprint in Red**, a block of four on India paper, very fine.
..... **Unitrade \$600**



- 346 **E/P #10TCi/ii/iii 5c Queen Victoria Trial Colour Plate Proofs in Black, with Types B, C and D SPECIMEN Overprints in Red**, a block of four on card-mounted India paper has Type B at top and Type D at bottom, and includes a plate inscription single on India paper with Type C overprint. Very fine.
..... **Unitrade \$850**



- 347 **E/P #10TCvii 5c Queen Victoria Trial Colour Plate Proof in Orange**, a block of four on India paper, very fine.
..... **Unitrade \$400**



- 348 **E/P #10TCviii 5c Queen Victoria Trial Colour Plate Proof in Black, with Type C SPECIMEN Overprint in Green**, on India paper, showing part of the imprint in the right margin. Tear at top, still a very fine appearing and scarce proof.
..... **Unitrade \$500**





- 349 **E/P #10P 5c Queen Victoria Plate Proof in Blue**, a plate block of four on card-mounted India paper, showing the complete imprint in top margin, very fine.
.....Unitrade \$300



- 350 **E/P #10P 5c Queen Victoria Plate Proof in Blue**, a horizontal strip of three on India paper, with the middle stamp showing a prominent plate scratch in the Queen's hair, very fine.
.....Est \$100



x351

- 351 **E/P #10Pi/ii/iii 10c Queen Victoria Plate Proofs with Type A, B and C SPECIMEN Overprints**, with two blocks of four on India paper, first has Type A on all four stamps, second has two Type B and two Type C overprints, very fine.
.....Unitrade \$550



- 352 *** #10c 1860 5c Dark Blue Queen Victoria**, mint with full original gum, lightly hinged and fine. A scarce mint stamp often missing in collections.
.....Unitrade \$250



- 353 **E/P #11TCDP 8 1/2c Queen Victoria Trial Colour Die Proof in Black**, on India paper measuring 39 x 42 mm, very fine.
.....Est \$500



- 354 **E/P #11TCi/ii 8½c Queen Victoria Trial Colour Plate Proof in Black, with Type B and D SPECIMEN Overprints in Red,** a plate block of 4 on card-mounted India paper, showing a large part of the plate inscription in margin at top, cut close at sides, fine.
..... **Est \$100**



- 355 **E/P #11TCi/ii 8½c Queen Victoria Trial Colour Plate Proof in Black, with Types B and C SPECIMEN Overprints in Red,** two items include a Type C plate block of 4 on India paper, showing the complete plate inscription in margin at bottom, with tiny pinhole just touching left of upper right stamp, else very fine, as well as a Type B plate block of four on card-mounted India paper showing a large part of the imprint at top, very fine.
..... **Unitrade \$750**



x356

- 356 **E/P #11TCiv/v/vi 8½c Queen Victoria Trial Colour Plate Proof in Vermilion, with Types B, C and D SPECIMEN Overprints in Green,** two items include a plate block of 4 on card-mounted India paper, showing large part of the plate inscription in margin at top, with Type B at top and Type D at bottom, very fine. Also a Type C lower left corner plate block of four on card-mounted India paper showing part of the imprints at left and bottom, very fine.
..... **Unitrade \$600**



- 357 **E/P #11TCviii Group of Four 8½c Queen Victoria Plate Proofs,** with a horizontal pair in orange (11TCvii, \$200) as well as three singles with various unlisted overprints including a CANCELLED in blue on a green proof (wrinkles), serifed SPECIMEN in red on a green proof (different from listed Type) and a serifed SPECIMEN in red on an orange proof (different from listed Type, stain and tear).
..... **Est \$100**





- 358 **E/P #11P 8½c Queen Victoria Plate Proof in Blue Green**, a block of 12 on card-mounted India paper, from lower right corner of sheet, showing two complete plate inscriptions, very fine.

.....Unitrade \$700



- 359 **E/P #11Pi 8½c Queen Victoria Plate Proof in Dark Green**, a block of 4 on India paper, very fine.

.....Unitrade \$300



- 360 **E/P #11Pii 8½c Queen Victoria Plate Proof in Blue Green, with Type A SPECIMEN Overprint in Red**, a plate block of 6 on card-mounted India paper, showing the complete plate inscription in margin at bottom, also showing the "Unshaded E" variety from position 94 at lower right, very fine.

.....Unitrade \$630



- 361 **E/P #12TC 10c Queen Victoria Trial Colour Plate Proof in Black**, a block of 4 on thicker India paper, showing part of an unerased guideline at left, thin spot on upper right stamp, else very fine. Ex Bishop.

.....Unitrade \$400



x362

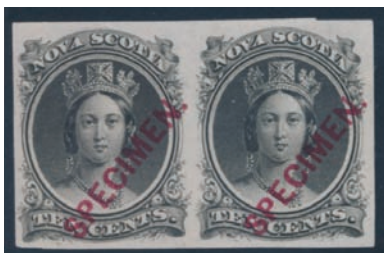
- 362 **E/P #12TC, etc. 10c Queen Victoria Trial Colour Plate Proof Group of Five Singles**, with yellow brown (12TCx, x2), green (12TCxi), dull red (12TCviii) and blue (12TCxii, with tear and cut into at top). All are on India paper and very fine unless otherwise noted.

Unitrade \$660



- 363 **E/P #12TCDP 10c Queen Victoria Trial Colour Die Proof in Black**, on India paper measuring 32 x 33 mm, very fine.

Est \$500



- 364 **E/P #12TCi/ii/iii 10c Queen Victoria Trial Colour Plate Proof in Black, with Types A, B and C SPECIMEN Overprints in Red**, with three items, a block of four with Type A (12TCii), a sheet margin block of four with Type A, showing large part of an unerased guideline at left, and a horizontal pair with Type C overprint. All are on India paper and very fine.

Unitrade \$1,080



- 365 **E/P #12TCv/vi 10c Queen Victoria Trial Colour Plate Proof in Black, with Types B and C SPECIMEN Overprints in Gold**, a block of 4 on India paper, top stamps have Type B and bottom have Type C overprints, very fine. A lovely and scarce Nova Scotia proof.

Unitrade \$2,000



- 366 **E/P #12TCxii 10c Queen Victoria Trial Colour Plate Proof in Blue**, a block of 4 on India paper, mounted on thinner card, with is thinned in places, which does not appear to affect the proofs, else very fine.

Unitrade \$600





367 E/P #12P 10c Queen Victoria Plate Proof in Pale Vermilion, a block of 25 on India paper, very fine.
.....Unitrade \$1,500



368 E/P #12P 10c Queen Victoria Plate Proof in Vermilion, a plate block of four on India paper, showing the complete plate imprint at bottom, very fine.
.....Unitrade \$300



369 E/P #12Pi/ii 10c Queen Victoria Plate Proof in Vermilion, with Types B and C SPECIMEN Overprints, a vertical plate block of six on card-mounted India paper, with Type B at top, bottom 4 stamps with Type C and showing complete plate imprint at bottom.
.....Unitrade \$375



370 E/P #12Pv, 12TCxiii 10c Queen Victoria Plate Proof Two Different Horizontal Pairs, with a Type A overprint in vermilion on card-mounted India paper (12Pv) as well as a trial colour proof in orange on India paper (12TCxiii), both pairs very fine.
.....Unitrade \$540



- 371 **E/P #13DP 12½c Queen Victoria Die Proof in Black**, on India paper measuring 39 x 42 mm, very fine.
..... **Est \$500**



- 372 **E/P #13DP 12½c Queen Victoria Die Proof in Black**, on India paper measuring 41 x 41 mm, very fine and scarce.
..... **Est \$500**



x373

- 373 **E/P #13TC/iv/x 12½c Queen Victoria Trial Colour Proofs in Vermillion Group**, with three items on India paper, includes an upper right corner block of four mounted on card, a single with Type D overprint and a horizontal pair with Type A overprint. A very fine group.
..... **Unitrade \$870**



- 374 **E/P #13TCDP 12½c Queen Victoria Goodall Trial Colour Die Proof in Blue Green**, on India paper mounted on larger card measuring 39 x 47 mm, showing the American Bank Note Co. imprint and number "94" at bottom. A horizontal crease on the card does not appear to affect the stamp (as it is attached at top only), still very fine and scarce. Minuse & Pratt 13P2g.
..... **Est \$750**



- 375 **E/P #13TCDP 12½c Queen Victoria Goodall Trial Colour Die Proof in Red**, on India paper mounted on larger card measuring 40 x 47 mm, showing the American Bank Note Co. imprint and number "94" at bottom, very fine and scarce. Minuse & Pratt 13P2g.
..... **Est \$750**





- 376 **E/P #13TCDP 12½c Queen Victoria Goodall Trial Colour Die Proof in Green**, on India paper mounted on larger card measuring 39 x 47 mm, showing the American Bank Note Co. imprint and number "94" at bottom, very fine and scarce. Minuse & Pratt 13P2g. Ex Sir Gawaine Baillie.

..... **Est \$750**



- 377 **E/P #13TCv, etc. 12½c Queen Victoria Trial Colour Proof Group**, with four items on card-mounted India paper, includes a block of four in orange (13TCix, this one not mounted on card), upper right corner block of four in green (13TCv, showing a re-entry in the top frameline of the upper right stamp), a block of four with two Type C at top and two Type B overprints at bottom (13TCvi/vii), and a sheet margin pair with Type D overprint (13TCviii, with unerased guideline at left). A very fine group.

..... **Unitrade \$1,420**



- 378 **E/P #13P 12½c Queen Victoria Plate Proof in Black**, a block of 16 on India paper, very fine.

..... **Unitrade \$960**



- 379 **E/P #13Pi/ii 12½c Queen Victoria Plate Proof in Black, with Types B and C SPECIMEN Overprints in Red**, a plate block of six on card-mounted India paper, showing the complete plate imprint at bottom, top stamps have Type B, lower 4 stamps have type C overprints, very fine.

..... **Unitrade \$375**



x380

- 380 **E/P #8P-13P 1c to 12½c Queen Victoria Cents Issue Set of Plate Proofs**, with all 6 values on India paper and in colour of issue except for the 1c which is in orange (8TCxi), 10c in brown (12TCx, listed as yellow brown) and 12½c in vermilion (13TC). The 1c and 2c have very light edge toning, rest are fine to very fine.
.....Unitrade \$560



x381

- 381 ☉/*/(*) **#2/13 Balance of the Mint and Used Nova Scotia Collection**, includes four Pence issues plus a selection of Cents issues, both mint and used, plus a few pairs and blocks. Mixed condition, still many are fine or better. All scanned online.
.....Est \$350

Prince Edward Island



- 382 **E/P Engraved 3c Essay in Green, Perforated 13**, printed on stout lightly hinged gummed paper, and thought to have been printed by the A.B.N. Co as it resembles the 1868 Revenue stamps printed there. A fresh and very fine example of this perforated essay. Minuse and Pratt # 13E-Aa.
.....Est \$150



383



384

- 383 (*) **#1 1861 2d Dull Rose Queen Victoria, Perforated 9**, unused (no gum) with irregular perforations at bottom, else a very fine stamp.
.....Unitrade \$1,000
- 384 (*) **#1a 1861 2d Deeper Rose Queen Victoria, Perforated 9**, unused (no gum), fine.
.....Unitrade \$400



x385

- 385 **E/P #3R 6d Queen Victoria Set of Post-Contemporary Reprint Die Proofs**, in 10 colours or shades, each on card stock measuring 97 x 64 mm. According to Kasimir Bileski, these were printed in England from the original die in about 1940 and sold publicly to raise funds for the British Red Cross, prior to the plate being transferred to the museum of the Royal Philatelic Society, London. Very fine.
.....Unitrade \$200



x386

- 386 (*)/* **#4b, 5b, 9d, 14a Group of 4 Different Queen Victoria Imperforates**, with #s 4b (unused no gum horizontal pair with light creases), 5b (an unused no gum horizontal pair with a crease down the centre margin), 9d (a sheet margin horizontal pair with hinged irregular gum) and 14a (a hinged single with crackled gum). Very fine appearing group.
.....Est \$150





- 387 E/P #6TCP/9TCP 4d Queen Victoria Trial Colour Die Proof in Light Blue, on thin wove paper, the reverse showing a large part of the 3d issue plus part of the next stamp in colour of issue. Very fine and scarce.
..... Est \$150



- 388 (*) #6b, var 1862 3d Queen Victoria Lot of Two Different Imperforates, first is a sheet margin horizontal pair in blue on white wove paper, second is a horizontal pair in dark blue on yellowish soft wove paper (unlisted in Unitrade). Both are unused (no gum, as issued) and very fine.
..... Est \$300



- 389 (*) #9d, 9v 1868 4d Black Queen Victoria Imperforate, an unused (no gum) horizontal sheet margin pair, with left stamp (position 19) showing the "FOUP" variety. Left stamp has a small stain showing through, else a very fine pair.
..... Est \$100



- 390 E/P #10TCP 4½d Queen Victoria Trial Colour Plate Proof in Deep Grey, on card-mounted India paper, very fine and the first we have encountered in this shade.
..... Est \$250



- 391 E/P #10TCP 4½d Queen Victoria Trial Colour Plate Proof in Deep Chocolate Brown, a horizontal pair on card-mounted India paper, very fine and scarce.
..... Est \$350



x392

- 392 E/P #11P, 13P, 16P Collection of "Cents Issues" Plate Proofs, with the 1c (sheet margin block of four in black, sheet margin block of four in orange and strip of three, all on thin paper), 3c (block of three in rose red on thin paper plus three Tilleard-printed singles in black) and 12c (single in purple on wove paper with corner crease in margin, and three Tilleard-printed singles). The non-Tilleard proofs in this lot appear to be contemporary (or at least late 19th century), and we have only seen very few comparables, most of which were in Sparks Auctions' January 2018 offerings of the L.S. Crosby collection of PEI.
..... Est \$750



- 393 **E/P #12TCDP 2c Queen Victoria Trial Colour Die Proof in Rose Red**, on horizontal wove paper, with large margins, very fine. Very few die proofs exist in this colour, and this is the first we have seen of this value. Unlisted in Minuse & Pratt.
..... **Est \$250**



- 394 **E/P #15P 1872 6c Queen Victoria Plate Proof in Black**, a horizontal pair on horizontal wove paper, shallow hinge thin at top, else scarce and very fine. Minuse & Pratt Appendix F #15a.
..... **Est \$100**



- 395 **E/P #16TCDP 12c Queen Victoria Trial Colour Die Proof in Rose Red**, on horizontal wove paper, with large margins, very fine. Very few die proofs exist in this colour, unlisted in Minuse & Pratt.
..... **Est \$250**



- 396 **(*) #16a 1872 12c Violet Queen Victoria Imperforate**, an unused (no gum) horizontal pair, with two creases along bottom of both stamps and a tiny tear in margin at top, else very fine and scarce.
..... **Unitrade \$750**



x397

- 397 ***/** #5, 6, 9, 16 1862-72 Group of 5 Mint Blocks of Four**, with #5 (fine, top 2 are hinged, bottom NH), 6 (fine-very fine, top 2 are lightly hinged, bottom NH, as well as a fine-very fine NH upper left corner block), 9 (fine, top two are lightly hinged, bottom NH) and 16 (fine-very fine NH). All 5 are fresh with bright colours.

..... **Scott U\$490**



x398

- 398 *** #4-16 Balance of the Mint Prince Edward Island Collection**, a group spanning Scott #s 4 to 16, with some duplication, with mint hinged and some without gum, in mixed condition, still with many fine or better. Includes one used stamp.

..... **Scott U\$1,181**



Newfoundland Pence



- 399 **E/P #1P 1d Heraldic Trial Colour Plate Proof in Black**, printed on thin card, very fine.
.....Unitrade \$300



- 400 *** #1, 5 1857 1d and 5d Brown Violet Heraldic Imperforates**, both mint with full original gum, hinged and very fine.
.....Unitrade \$610



- 401 **(*) #1 var 1857 1d Brown Violet Heraldic Imperforate with Major Pre-Printing Fold**, unused (no gum), with a dramatic pre-printing fold, visually appealing and rare.
.....Est \$200



- 402 **⦿ #3 1857 3d Green Heraldic Imperforate**, used with part grid cancel, a nice stamp with large margins, save for a tiny pinhole and thin above P of PENCE, very fine. Accompanied by a 2021 Greene Foundation certificate.
.....Unitrade \$800



403

- 403 **⦿ #7 1857 6½d Scarlet Vermilion Heraldic Imperforate**, used with clean segmented cork cancel, the stamp has three large margins plus top just touching at right. There is a partially repaired scissor cut at upper left, else a fine appearing stamp. Accompanied by 1970 R.P.S.L. certificate (not mentioning the fault) and a (pink) 2021 Greene Foundation certificate. Ex Robert H. Pratt (1986).
.....Unitrade \$2,750



404

- 404 *** #8 1857 8d Scarlet Vermilion Heraldic Imperforate**, mint with large part original gum, four large to well clear margins, bright colour and very fine.
.....Unitrade \$500



405

- 405 **(*) #8 1857 8d Scarlet Vermilion Heraldic Imperforate**, unused (no gum) with very large margins and bright colour and pen initials on back, and tiny pen mark in right margin, still very fine.
.....Unitrade \$500



406

- 406 **(*) #11 1860 2d Orange Heraldic Imperforate**, unused (no gum) with large to well clear margins, very fine.
.....Unitrade \$600



x407

- 407 ***/(*) #11A 1860 3d Green Heraldic Imperforate**, a mint group including a very fine block of four (unused, no gum) and three singles with original hinged gum, with two very fine and one fine-very fine.
.....Unitrade \$810



408 * **#15A 1861 1d Violet Brown Heraldic Imperforate**, a mint sheet margin block of four with original hinged gum, previously folded horizontally in margin, just touching the bottoms of the top stamps, else overall fine-very fine. Accompanied by a 2021 Greene Foundation certificate. **This is one of only two known blocks of this stamp**, the other recently sold for \$6,000 plus premium. A great Newfoundland rarity for the advanced collector. Ex. Robert H. Pratt (1986)

.....**Est \$2,500**



409 * **#19 1861 5d Chocolate Brown Heraldic Imperforate, Unwatermarked**, a mint lower left corner block of four, with full original gum which is very lightly hinged, with a vertical crease in margin at left, very fine.

.....**Unitrade \$400**



410 * **#19a, 19bi Group of 1861 5d Heraldic Imperforates**, all mint with full original hinged gum, with #s 19a (very fine single), 19a (fine-very fine pair) and 19bi (very fine watermarked chocolate shade).

.....**Unitrade \$530**



411 */** **#21 1861 6½d Rose Heraldic Imperforate**, a mint block of four with full original gum, top stamps hinged, bottom never hinged, very fine. Ex Robert H. Pratt (1986).

.....**Unitrade \$720**





- 412 *** #22, 22i 1861 8d Rose Heraldic Imperforate, a mint block of four with full original gum, top stamps hinged, bottom stamps never hinged, and bottom right stamp showing complete letters "ST" of the watermark, very fine. Ex. Robert H. Pratt (1986).
.....Unitrade \$880



- 413 ** #23 1861 1sh Rose Heraldic Imperforate, a mint upper right corner block of four, with full original gum, never hinged. There is a horizontal crease in the top margin, far from the stamps, very fine. Ex Robert H. Pratt (1986).
.....Unitrade \$480



x414

- 414 */(*) #17/23 1861-62 Group of Six Different Heraldic Imperforates, with the 2d (no gum), 4d (no gum) and the rest are mint hinged: 6d, 6½d, 8d and 1sh (the latter has hinge remnants). Very fine overall.

.....Unitrade \$580

Newfoundland Cents



x415

- 415 E/P #24P-31P 2c to 24c First Cents Issue Set of Plate Proofs, all in horizontal pairs on card-mounted India paper, with 24P, 25Pi, 27P, 28P, 30P and 31P. A very fine and desirable set.

.....Unitrade \$940



x416

- 416 */(*) #24-31 1865-94 First Cents Issue Set, all ranging from unused (no gum or regummed) or original hinged gum, with #s 24-31, 24a, 27a, 28a and two extra #31. A fine or better group which may have a few small faults, rarely offered as a full set. Two have R.P.S.L. certificates (one erroneously identifies a 24c as being on stout white paper).

.....Scott US\$2,940



x417

- 417 **E/P #25Pi, etc. 5c Harp Seal Group of 5 Different Plate Proofs**, all on India paper, with #s 25Pi, TC, TCi, TCii and TCiv. A very fine group.
.....Unitrade \$830



- 418 **#26 1869 5c Black Harp Seal**, used with cork cancel, well centered with large margins, very fine.
.....Unitrade \$300



- 419 **E/P #28P, 28TCP 12c Queen Victoria Plate Proofs in Three Different Colours**, with 28P in red brown (a sheet margin single) plus a trial colour proof in orange yellow (28TC) and an unlisted colour we will call deep orange. The latter is the only example of this shade we have seen. A very fine trio.
.....Est \$150



- 420 **E/P #28TSP 12c Queen Victoria Trade Sample Proofs in Two Different Colours**, both on white paper, one in lavender (small thin) and one in dusty rose. Each has part of the fancy scroll from the top of the trade sample sheet. Very fine.
.....Unitrade \$500



- 421 *** #30 1865 13c Orange Ship**, a mint block of four with full original hinged gum, fine.
.....Unitrade \$480



- 422 **E/P #30TSP 13c Ship Perforated Trade Sample Proof in Olive Brown**, printed on gummed stamp paper, very fine.
.....Est \$300



- 423 **E/P #30TSP 13c Ship Perforated Trade Sample Proof in Bright Green**, printed on gummed stamp paper, very fine.
.....Est \$300



x424

- 424 **E/P #30TSP 13c Ship Group of Five Different Trade Sample Proofs, Etc.**, all on paper of various thicknesses, includes bright green, carmine lake, grey black, violet (plate proof on India 30TC) and black. The latter has a horizontal yellow brush stroke, and the carmine lake one has a small thin, otherwise very fine.
.....Unitrade \$1,120





x425

- 425 **E/P #32TC, etc, 1c Prince of Wales Group of 6 Different Trial Colour Plate Proofs**, all in horizontal pairs, printed by the National Bank Note Co. on card-mounted India paper, with #s 32TC, TCi, TCiv, TCvi, TCvii and TCix. A very fine and lovely group.

.....Unitrade \$1,300



x426

- 426 **E/P #32P/32TCix 1c Prince of Wales Group of 7 Different Plate Proofs**, all on India paper, with #s 32P, 32TCi, 32TCii, 32TCv, 32TCvi, 32TCvii and 32TCix. A very fine group.

.....Unitrade \$680



x427

- 427 *** #32-36 1868-94 1c to 6c Second Cents Issues**, with all six issues being mint hinged with fine centering.

.....Unitrade \$590



x428

- 428 **E/P #32AP, 32API 1c Prince of Wales ABN Co. Re-Engraved Plate Proof Group**, all on India paper, in violet brown (card-mounted lower sheet margin block of four), violet brown (horizontal pair) and violet (plate imprint horizontal pair). All very fine.

.....Unitrade \$750



x429

- 429 **E/P #33P, etc. 3c Queen Victoria Group of Four Different Plate Proofs**, all on India paper, with 33P (horizontal pair), TC, TCiii, TCv. An overall very fine group.

.....Unitrade \$480



x430

- 430 **E/P #35P, etc. 6c Queen Victoria Group of Three Different Plate Proofs**, all on India paper, with 35P (horizontal pair), TC and TCiv, the latter two have small stains at top, else an overall very fine group.

.....Unitrade \$380



- 431 * #37-40 1876-79 1c to 5c Rouletted Set, all mint with full original gum, with 1c (very fine lightly hinged), 2c (fine hinged with plate inscription at right), 3c (very fine hinged) and 5c (fine lightly hinged with plate inscription at top).
.....Unitrade \$1,100



- 432 * #40 1876 5c Blue Harp Seal Rouletted, a mint block of four from right of sheet, with full original gum, lightly hinged. The two right stamps are very fine (top has jumbo margins all around) and the left two stamps are fine, showing parts of the adjoining stamps at left. A fresh and fine-very fine block. Accompanied by a 1978 B.P.A. certificate.
.....Unitrade \$1,100



- 433 ** #41 1880 1c Violet Brown Prince of Wales, mint with full original gum never hinged, fresh and fine-very fine.
.....Unitrade \$237



x434

- 434 */(*) #41, 42, 47, 54 Group of Four Different Mint Blocks of Four of the 1880-96 Issue, with a 1c violet brown, a 1c grey brown, a 2c green and a 5d dark blue (with natural pre-printing fold on bottom left stamp). Each block has a varying degree of gum, from almost none (both 1c) to a large part for the 2c and 5c, overall fine or better.

.....Est \$400



- 435 ** #42 1880 1c Grey Brown Prince of Wales, mint with full original gum, never hinged, with very large margins, extremely fine. Accompanied by a 2021 Greene Foundation certificate stating "gum very lightly disturbed" with which we humbly disagree.

.....Unitrade \$400



- 436 ** #48 1880 2c Red Orange Codfish, a mint lower left corner block of four, with full original gum, never hinged and fine.

.....Unitrade \$160





- 437 **** #49 1896 3c Blue Queen Victoria**, mint with full original gum, never hinged. A fresh and very fine stamp.
Unitrade \$400



- 438 **** #55 1894 5c Bright Blue Harp Seal with "Falling Blue Ice Cubes" Variety**, a mint never hinged plate block of 12 showing a large part of the imprint in the right margin. The top right stamp (position 30) shows the newly discovered "Falling Blue Ice Cubes" variety (Walsh 47d). The block is quite fresh with bright colour, and has full original shiny yellowish gum, with only the top left stamp missing a small bit of gum. This variety has been written-up in *Maple Leaves* January 2018, which prompted the owner of this lovely piece to follow up in a subsequent article published in April 2018. Extensive research done by Walsh, Hennebury and others has resulted in finding no other positional pieces so far, so this one can be considered unique. An important piece, and a must have for any serious Newfoundland collection, overall fine. Accompanied by a 2017 R.P.S.L. certificate incorrectly describing the printing as "Pale dull blue, 1880-82".
Est \$1,000



x439

- 439 *** #61-74 1897 1c to 60c Discovery of Newfoundland Set**, mint hinged and overall very fine.
Unitrade \$497



x440

- 440 **E/P #87P-97P 1910 1c to 15c John Guy Lithographed Set of Plate Proofs**, all in horizontal pairs printed in colour of issue on thick gummed paper, hinged and very fine. The complete set of 10 values, as the 6c Type I and 12c do not exist. A scarce set.
Unitrade \$2,500



x441

- 441 *** #98-103 1911 6c to 15c John Guy Engraved Set**, with each value mint lightly hinged, fresh and very fine.
Unitrade \$580



- 442 **(*) #114a 1911 15c Magenta Colony Seal Imperforate**, a left sheet margin block of four, unused (no gum, as issued) with deep intense colour, fresh and very fine. Accompanied by a 1979 R.P.S.L. certificate.
Unitrade \$400



x443

- 443 * #115-126, 124b 1919 1c to 36c Trail of the Caribou Set, a mint lightly hinged basic set which also includes the sought-after 15c Prussian blue shade. Very fine.

.....Unitrade \$800



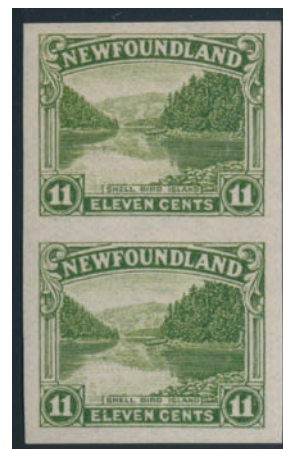
x444

- 444 (*) #115a-126i 1919 1c to 36c Trail of the Caribou Set Imperforate, with each unused (no gum, as issued) value presented in a horizontal pair, all but one have sheet margins at right, and nine of those have a double border line in colour of issue. A remarkable and lovely set which would be a great addition to any serious Newfoundland collection. Ex Professor Albert Hamilton collection (2017).

.....Unitrade \$4,200



445



447

- 445 * #130a 1920 3c on 15c Scarlet Surcharge with Lower Bar Omitted, on the lower stamp of a vertical pair, mint hinged and very fine.

.....Unitrade \$216



x446

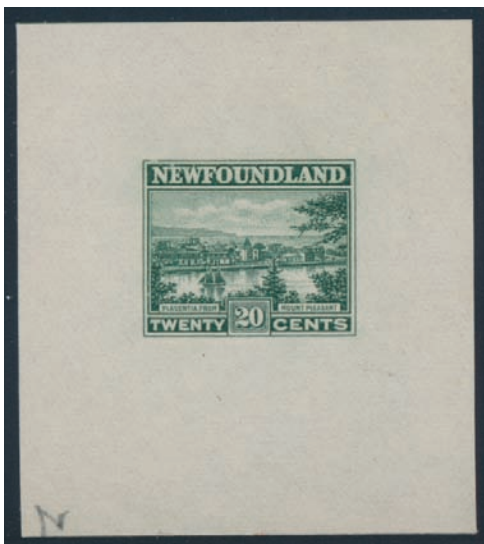
- 446 (*) #131b/142a 1923-24 Engraved Pictorial Issue Group of Imperforate Pairs, with the 1c, 2c, 4c, 5c, 6c and 15c, all unused (no gum, as issued) except the 2c value which is mint never hinged. The four high values all have sheet margins, including the 15c which is from the lower left corner of the sheet. Very fine and scarce, with only 100 stamps issued of each value.

.....Unitrade \$1,775

- 447 ** #140a 1923 11c Olive Green Shell Bird Island Imperforate, a mint never hinged vertical pair, very fine.

.....Unitrade \$450





- 448 E/P #143TCDP 20c Placentia Trial Colour Die Proof in Dark Green, on India paper measuring 45 x 51 mm. Very fine and scarce.
..... Est \$350



- 449 E/P #144TCP 1923 24c Topsail Falls Trial Colour Plate Proof in Indigo, a horizontal pair printed on bond paper, with an underinked impression, very fine and unusual.
..... Est \$150



x450

- 450 */** #163c/253a Group of Imperforate Pairs and a Single, with Unitrade #s 163c (mint hinged sheet margin pair with crackled gum), 165a (vertical pair with crackled gum and light creases), 166a (mint lightly hinged pair), 186iii (lightly hinged sheet margin pair), 194a (lightly hinged vertical pair), 209a (never hinged pair from bottom of sheet), 248a (no gum sheet margin single, not counted in total) and 253a (hinged horizontal pair).
..... Unitrade \$1,360



- 451 ** #183b 1932 1c Green Codfish Imperforate, a mint never hinged upper left corner horizontal pair, very fine.
..... Unitrade \$450



- 452 ** #183c 1932 1c Codfish Imperforate Horizontally, Perforated 13.3, a mint never hinged sheet margin vertical pair, with a tiny bit of gum disturbance on top stamp, still very fine.
..... Unitrade \$375

SPARKS
★ AUCTIONS

We are always seeking nice material for our sales. Contact Stéphane to discuss your consignments to our future auctions.

stephane@sparks-auctions.com



453 E/P #185TCP 2c King George V Trial Colour Plate Proof in Violet, a sheet margin block of four, printed on unwatermarked white wove paper, very fine and scarce. Minuse & Pratt 185TC5a.
.....Est \$200



454 * #185c 1932 2c Rose King George V Imperforate, a mint hinged upper marginal horizontal pair, very fine.
.....Unitrade \$300



455 */** #187d 1932 3c Orange Brown Queen Mary Imperforate, a mint never hinged block of four, top pair lightly hinged, bottom pair NH, very fine.
.....Unitrade \$300



x456

456 #189a, 193a 1932 4c Rose Lake and 10c Olive Black Imperforate Issues, both in mint blocks of four, the 4c block has uneven and hinged gum, the 10c top pair is lightly hinged, bottom pair NH, both very fine.
.....Unitrade \$525

Subscribe To Our Mailing List

Are you getting announcements of future auction dates and other important news?

We send out e-mails fewer than a dozen times a year, so you will only get reminders about upcoming sales, and important information on what's new with us. We will be glad to sign you up, just send us an e-mail with your address.

You can also manage your own mailing list subscription on our site. Go to sparks-auctions.com and look for the menu link under About Us. If you have chosen "don't send me e-mails" in your Stamp Auction Network account, or you have unsubscribed to the mailing list in the past, we cannot change your settings for you, and you will have to follow the link to do so yourself.



- 457 */** #190a 1932 5c Violet Brown Caribou, Die I Imperforate, a mint block of four, top pair lightly hinged, bottom pair NH, very fine.
.....Unitrade \$750



- 458 E/P #192P 6c Princess Elizabeth Plate Proof in Dull Blue, a sheet margin block of four printed on unwatermarked wove paper, very fine.
.....Est \$200

Proud partner sponsor of



- 459 ** #193a 1932 10c Olive Black Salmon Leaping Imperforate, a left sheet margin block of four, mint never hinged and fresh, very fine.
.....Unitrade \$450



- 460 */** #195a 1932 15c Magenta Harp Seal Pup Imperforate, a mint block of four, hinged at top, bottom pair never hinged, very fine.
.....Unitrade \$500



- 461 */** #196a 1932 20c Grey Green Cape Race Imperforate, a mint block of four, hinged at top, bottom pair never hinged, very fine.
.....Unitrade \$875



- 462 * #197a 1932 25c Grey Sealing Fleet Imperforate, a mint horizontal pair, lightly hinged and very fine.
.....Unitrade \$350



- 463 */* #197a 1932 25c Grey Sealing Fleet Imperforate, a mint block of four, hinged at top, bottom pair never hinged, very fine.
.....Unitrade \$875



- 464 * #198a 1932 30c Ultramarine Fishing Fleet Imperforate, a mint hinged horizontal pair, very fine and scarce. The key imperforate of this issue which is almost always missing from even the most advanced collections.
.....Unitrade \$1,200



- 465 E/P #199TCP 48c Fishing Fleet Trial Colour Plate Proof in Black, a vertical pair printed on yellowish wove paper, very fine and unlisted in Minuse & Pratt.
.....Est \$150



- 466 * #210b 1932 24c Light Blue Loading Ore on Bell Island with Double Impression, mint lightly hinged and fine. A scarce and dramatic variety which is accompanied by a 1973 R.P.S.L. certificate.
.....Unitrade \$2,000



x467

- 467 */* #212a/224a 1933 Group of Five Different Sir Humphrey Gilbert Imperforate Issues, all in mint blocks of four, the 1c is lightly hinged at top, 2c is never hinged, 4c has sheet margin at right and is very lightly hinged at top, 15c is hinged at top and 24c has a sheet margin at bottom and is hinged at top only. A very fine group.
.....Unitrade \$2,565





- 468 * #213b 1933 2c Green Compton Castle with Double Impression, mint lightly hinged and very fine. A dramatic and rarely offered variety.
.....Unitrade \$800



- 469 ** #218a 1933 8c Brownish Red Fleet Leaving Plymouth Unissued Colour, mint never hinged, with a tiny stain above one of the mountains (mentioned for strict accuracy, not mentioned in certificate) which does not deter to the rarity of the issue (only 200 printed), fine. Accompanied by a 1969 R.P.S.L. certificate.
.....Unitrade \$562



x470

- 470 E/P #233P/243P 1937 King George VI Long Coronation Issue Group of Plate Proofs, with the 1c to 48c values (missing only the 2c), all in vertical pairs printed on unwatermarked bond paper in the colours of issue. The 14c value has a horizontal crease in margin between the stamps, and its bottom stamp has a crayon mark, else a very fine group, not often offered.
.....Est \$500



- 471 (*) #234f 1937 3c King George VI Long Coronation Issue Imperforate, Die II, an unused (no gum, as issued) vertical pair, with both stamps watermarked, very fine.
.....Unitrade \$300



x472

- 472 ** #245a-248a 1938 2c to 7c Royal Family Set Imperforate, all four values are in mint never hinged horizontal pairs, fresh and very fine.
.....Unitrade \$1,200



x473

- 473 ** #253-266 1941-44 1c to 48c Definitives Set, Waterlow Printing, with each value in a mint never hinged block of four, a fresh and very fine set.
.....Unitrade \$180



- 474 */** #266il 1944 24c Red Brown Fishing Fleet Imperforate, a bottom sheet margin block of four, with each stamp security punched. The lower left stamp has a small colour stroke that has been circled by a controller, with additional note in the margin at bottom. Mint, with thin paper adherence on left pair, right pair NH, very fine.
.....Unitrade \$375



x475

- 475 (*) 1922 15c Vickers-Vimy Essays in Three Different Blocks of Four, originally prepared in 1922 by Whitehead, Morris and Co. London but never issued, with a brown and black imperforate block, brown and black perforated lower left corner block, and brown and blue perforated lower left corner block, each without gum as issued, fine-very fine. Listed by Walsh as TE1, TE2, TE3 and priced at \$2,240, noting that "it is believed that a sheet of 100 was made for each of the above essays". Rarely seen in blocks, also includes a single perforated forgery.
.....Est \$1,000



- 476 * #C2, C2a 1919 \$1 on 15c Scarlet Airmail Surcharge Issue, two different mint hinged singles, one has a comma after POST (very fine) and the other is without comma after POST (fine-very fine). Both with bright colour and fresh.
.....Unitrade \$600



- 477 */** #C3, C3h 1921 35c Red Halifax Airmail Issue, a mint block of four with the top hinged pair showing no period after 1921 and wide spacing (C3) and the bottom never hinged pair shows the narrow spacing and period after 1921 (C3h). All stamps are very fine and fresh.
.....Unitrade \$1,375



- 478 ** #C3b 1921 35c Red Halifax Airmail Issue, a mint never hinged vertical pair, showing the wide spacing and period after 1921 (C3b). Both stamps are fine and fresh.
.....Unitrade \$480





- 479 * #C5 1930 50c on 36c Columbia Flight Surcharge, mint with full original gum, extremely lightly hinged (as per certificate only, as we cannot see any evidence), well centered with fresh, bright colour, very fine. One of the nicest examples we have handled. Accompanied by a 1993 B.P.A. certificate, as well as a 2021 Greene Foundation certificate, both stating the stamp is from "position 2" (of the setting).
..... Unitrade \$12,000



- 480 E/P #C6DP-C8DP 15c to \$1 Airmail Set of Three Die Proofs, each printed in colour of issue, on unwatermarked wove paper, with all three having a stamped die number and two low values with centering guidelines in margin, very fine. Ex Cyril H.C. Harmer (2003).
..... Est \$1,000



x481

- 481 */** #C6-C11 1931 15c to \$1 Pictorial Airmail Issue Sets, Watermarked and Unwatermarked, mint hinged except for C9 and C11 which are never hinged, very fine.



Scans of all lots can
be found online at
StampAuctionNetwork.com

Want more scans of a lot?
Email us at info@sparks-auctions.com



482 ** #C6c 1931 15c Brown Dog Sled and Airplane Imperforate, a mint never hinged upper right corner block of nine. This impressive block has naturally disturbed gum on back and bits of gum residue on front, affecting the lower right stamp and part of the right margin. None the less a probably unique block of this very rare imperforate issue. Catalogued as 4 pairs.

Unitrade \$4,500



483 * #C7b 50c Green Airplane and Packet Ship Vertical Pair, Imperforate Between, Unwatermarked, mint lightly hinged, fresh and very fine. A scarce variety.

Unitrade \$2,500



484 ** #C7c 50c Green Airplane and Packet Ship Imperforate, Unwatermarked, a mint never hinged left sheet margin block of four, fresh and very fine. A lovely item.

Unitrade \$3,600



485 ** #C8c \$1 Blue Historic Transatlantic Flights Imperforate, Unwatermarked, a mint never hinged left sheet margin block of four, fresh and very fine.

Unitrade \$3,000



486 * #C12 1932 \$1.50 on \$1 Blue Airmail with Dornier DO-X Surcharge, mint lightly hinged, very fine.

Unitrade \$400



x487

487 ** #C13a, C14a 1933 5c and 10c Airmail Issues Imperforate, both in mint never hinged left margin vertical pairs, very fine.

Unitrade \$960



x488

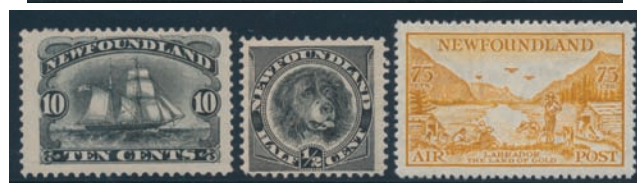
- 488 */** #C13a-C17a 1933 5c to 75c Airmail Set, Imperforate, all in mint vertical pairs, the lower three values are never hinged, two others are lightly hinged at top, very fine.
..... Unitrade \$4,200



- 489 * #C18 1933 \$4.50 on 75c Bistre Balbo Flight Surcharge, Perforated 14.3, mint lightly hinged, very fine.
..... Unitrade \$450



- 490 E/P 1922 Unadopted Revenue Engraved 2c Dog Essay, in a horizontal pair in bluish black on bond paper. A rare stamp, listed in Walsh as #RTE 1. A lovely item for the Newfoundland specialist or dog topical collector.
..... Walsh \$1,100



x491

- 491 */** #41/270 Balance of the Mint Newfoundland Collection, mostly on Lighthouse pages, including an extensive range of #41-59, with a few pairs, shades, etc. We noted #s 55 (x2, one mint hinged, the other regummed), 87/97 (missing one 6c), C13-17, and more, plus a card containing a group of 14 used First Cents (these not counted). Accompanied by a 1979 R.P.S.L. certificate for the #49b pair. High catalogue value, with most stamps mint hinged, but also includes some without gum or never hinged (all counted as hinged). All pages are scanned online.
..... Scott US\$6,829

Symbols and Abbreviations

- ** never hinged with original gum (NH also used)
- * hinged with original gum
- (*) unused without gum either as issued, or having gum fully removed. This is normally further qualified in the description.
- og original gum
- ⊙ used includes full range of postally used, cancelled-to-order, precancels.
- XF extremely fine applies to stamps with exceptional quality and margins well in excess of what would typically be found. This term is used rarely and is not used by us on items usually only found this way.
- VF very fine a stamp in superior condition which is well-centered and without fault.
- F-VF fine-very fine applied to stamps that are somewhat less well-centered than very fine, while taking into account what may be considered as typical margins of classic material. The term has also been applied to multiples with individual stamps with range of grade or for larger lots/collections.
- F fine stamps having perforations that do not cut into the design and without damaging faults. Items described as such may have slight detracting features such as short perforation tips or natural inclusion. Many better classic material naturally falls into this category and may be expected to command prices similar to those ascribed by catalogue values.

VG very good equivalent to "average". Typically with poor centering, heavy cancellation or faults such as minor thins, light creases, etc.

☒ cover which here embraces stampless folded letters (SFL), envelopes, first day covers (FDC's), stationery envelopes, etc.

E/P essay, proof, die proof

F forgery

UL upper left usually used to describe the corner of a sheet, block or individual stamp. The abbreviations UR, LR and LL are used similarly.

c.d.s. circular date stamp postmark

MNH mint never hinged

l.h. lightly hinged

v.l.h. very lightly hinged

h.r. hinge remnant

perf. perforation used in the context of "short perfs" or a perforation measurement, such as "perf. 12.0 x 11.5"

Est. estimate when there is no price guide for the item, this is our estimate of the final hammer price if there is average competition for the lot.

-, / used when describing a range of catalogue numbers, where "-" indicates the range is complete between two numbers, and "/" indicates missing one or more items.

c.v. catalogue value

TERMS & CONDITIONS OF SALE

1. The property described in the sale catalogue (print and online versions) will be offered at public auction by Sparks Auctions Inc. (hereinafter "Sparks Auctions") on behalf of various consignors. By bidding on any lot, whether in person, or through an agent, via Stamp Auction Network, by mail, email, fax, telephone, website, or any other means, **the bidder acknowledges and agrees to all of these Terms and Conditions of Sale.**

2. The highest bidder acknowledged by the auctioneer shall be the buyer. The term "hammer price" means the last bid acknowledged by the auctioneer. **The purchase price payable by the buyer will be the sum of the hammer price and a commission equal to 17% of the hammer price** ("buyer's premium"), together with any tax which may be applicable. See "About Bidding" for more information about how bidding is conducted in Sparks Auctions' sales.

3. All bids are per lot as numbered in the catalogue. The auctioneer shall regulate the bidding and reserves the right to reject any bid believed by him not to be made in good faith; to withdraw any lot prior to sale; to divide a lot; or to group two or more lots and to act on behalf of the vendor. In the event of any dispute, **the auctioneer's decision shall be final.** Sparks Auctions will execute bidding instructions on behalf of clients, but will not be responsible for any errors in the execution of such bids. Opening bids will be available on Stamp Auction Network and will be updated by that system.

4. Unless a bidder has established payment terms with Sparks Auctions prior to the sale, Sparks Auctions must receive payment in full before the lots will be delivered. Buyers not known to Sparks Auctions must make payment in full within five days from the date of sale. Accounts more than thirty days in arrears will be subject to **a late payment charge of 2% per month.** All expenses incurred in securing payment from delinquent accounts will be charged to the defaulter. A fee of \$100.00 will be charged for any cheque returned for insufficient funds.

5. All sales are conducted in **Canadian Funds.** Payment may be made by e-transfer, bank draft, bank wire transfer, cheque drawn on a Canadian or U.S. bank, Canadian or International postal money order, cash or credit card. **There is a 2.5% convenience fee to process credit card payments.** Cash/Cheque payment in U.S. funds is acceptable at the same rate which Sparks Auctions can purchase Canadian Funds at our bank (2.5% percent above the midmarket rate). Contact us if you require the exact amount owed in U.S. funds. Credit cards will be processed in Canadian Funds. **Buyers from Canada will be charged the taxes applicable in their home province.** Bidders resident outside Canada are not liable for Canadian taxes if purchases are delivered outside of Canada. See "Shipping Information" for Sparks Auctions' shipping policies. Buyers outside Canada are responsible for all customs duties applied by their home country.

6. **Until paid in full, all lots remain the property of Sparks Auctions on behalf of the seller.**

7. The buyer assumes all risk for delivery of purchased lots and agrees to pay for prescribed shipping costs. See "Shipping Information" below for Sparks Auctions' shipping policies.

8. Because the auction catalogue is available in multiple formats (print, online at sparks-auctions.com and StampAuctionNetwork.com) there is a possibility of technical or other error. In that event **the auctioneer's decision will be final.** If discovered before the sale, corrections will be posted on www.sparks-auctions.com. These are only provided as a service to bidders and Sparks Auctions does not guarantee their completeness or accuracy. See "Valuation of Lots" for an overview of Sparks Auctions' use of catalogue values and estimates.

9. **Any lot, the description of which is obviously incorrect, is returnable, but only if the lot is returned to us within 14 days of receipt.** All disputed lots must be returned intact with the original packing material. **The following lots may not be returned for any reason:**

- a. Lots containing ten or more items;
- b. Any lot described with "faults" or "defects" may not be returned because of any fault or defect;
- c. No lots illustrated in our printed catalogue or online may be returned because of centering, margins or other factors shown in the illustrations, including easily visible flaws. It is the bidder's responsibility to view lot images online before bidding.
- d. No lot shall be returned due to subsequent numerical grading unless the graded certificate describes faults not already described by us;
- e. It is normal for postal history items to have small faults including but not limited to minor nicks, pencil notations on back, edge and backflap tears, and slight reductions consistent with commercial usage. Folded letters should be expected to have at least one file fold. While we strive to mention more significant flaws,

condition issues such as the aforementioned are not grounds for return. Items being offered primarily on the basis of the postmark are not returnable on the basis of flaws to the underlying item.

f. If electronic media are included with a lot (for example, CD, DVD, USB device, etc.) we cannot take any responsibility for the contents or integrity of such media and the buyer assumes any and all risk associated with use of it, including any damage to electronic devices by such use.

10. All lots are sold as genuine, unless otherwise noted. If a purchaser wishes to obtain an expert opinion on a lot, an extension for expertization may be granted provided that the following conditions are met:

- a. Notice of this intent is given prior to finalizing the purchase.
- b. The purchase price of the lot is paid in full, including any expertizing fees.
- c. All lots to be sent out on extension must be paid in advance and submitted by Sparks, directly. Sparks will use one of the following expertizing services:
 - i. Vincent Graves Greene Foundation (Canada and BNA); or
 - ii. BPA or RPSL (British Commonwealth); or
 - iii. Philatelic Foundation or PSE (USA and territories); or
 - iv. Another authority mutually agreeable to both parties.
- d. Extensions are granted for the reasonable period of time required by the expertizing authority;
- e. If in the opinion of the authority the lot is not genuine or was grossly misdescribed, the purchaser shall receive a full reimbursement of the purchase price including the expertization fee;
- f. If a purchased item has a recognized certificate dated within the last seven years, extensions will not usually be granted.

11. Lots which include the notation 'Rsv.' are offered subject to a minimum bid ("reserve"), agreed to between the consignor and Sparks, below which the lot will not be sold in the auction. Any lot which does not meet the reserve will be stated to have been "passed" during auction proceedings.

12. Should any dispute arise over these Terms and Conditions, such dispute will be settled according to the laws and regulations of the Province of Ontario, Canada, with options for resolution being negotiation between the parties, followed by mediation, followed by action in the most appropriate legal venue in Ontario.

Shipping Information

Please note that items will be shipped by the least expensive method below unless other arrangements are made between the buyer and Sparks Auctions in advance of shipping.

All shipping methods are subject to the current regulations and protocols of the shipping provider, which can change from time-to-time in response to various conditions outside the control of Sparks Auctions. To maximize shipping efficiency and minimize cost to the buyer, some lots may be shipped without multi-ring binders or other bulky housing mentioned in a lot description, or by combining the contents of multiple housings into fewer of them.

Within the National Capital Region:

- a) Normally, it is expected that local residents will arrange for pick-up from our office, by appointment only.
- b) Shipping can be arranged using the "Within Canada" methods described below, or by other means if specific arrangements are made between the buyer and Sparks Auctions.

Within Canada:

- a) Single or multiple lots that fit into one or more regular Canada Post Xpresspost labeled envelopes will be shipped by that method with signature required. These lots will be charged postage only but not a handling, packaging, or insurance fee.
- b) Cartons and larger lots will normally be shipped by parcel post or FedEx with signature required. If bulky lots have a value in excess of \$1,000 they will be shipped by Xpresspost with signature required. This category of lots will usually be charged an additional handling or packaging fee.

To the USA:

- a) Single or multiple lots will be sent by Canada Post with signature required and no extra handling, packaging, or insurance fees.
- b) Cartons and larger lots will be shipped by Canada Post parcel post or FedEx Ground with signature required. This category of lots will usually be charged an additional handling or packaging fee.

Overseas:

- a) Single or multiple lots will be sent by Registered or Xpress Mail with signature required and no extra handling, packaging or insurance fees.
- b) Carton and larger lots will be shipped by pre-arrangement only. We reserve the right to not ship to areas of the world not served by FedEx.



About Bidding

Bidding in a Sparks Auction takes place in accordance with our Terms and Conditions and can happen in several ways:

1. Advance Bidding

We accept bids in the time-honoured tradition before the auction starts:

- you can mail us a printed bidsheet (included with the print catalogue and also available for download from our site). If you use mail to send us a bidsheet, please call at least the day before the sale begins to confirm that we have received it.
- you can fax us a printed bidsheet (included with the print catalogue and also available for download from our site) to 613-567-2972.
- you can call our office at 613-567-3336 or use our North American toll-free number is 844-252-2032.
- you can email your bids to info@sparks-auctions.com. Simply provide the lot number and your maximum bid in Canadian dollars.

Please use the following bidding increments:

\$10 - \$200	\$10	\$7500 - \$15,000	\$500
\$200 - \$800	\$25	\$15,000 - \$30,000	\$1,000
\$800 - \$1500	\$50	\$30,000 - \$100,000	\$2,000
\$1500 - \$3000	\$100	\$100,000 - \$500,000	\$5,000
\$3000 - \$7000	\$200	above \$500,000	\$10,000

All bids not conforming to these increments will be rounded down to the previous increment.

If two identical bids are received for a particular lot, the bid received earliest will prevail, regardless of how the bid was received.

2. Telephone Bidding

We can arrange for you to participate in the sale via telephone. Phone bidding must be arranged at least one day in advance so we can assign a staff person to call you at the time the lots you want come up for sale. In general, telephone bidding is best for more expensive items. If telephone bidding is not convenient for you, we encourage bidders to engage an agent, or to use live bidding on Stamp Auction Network to make sure their bids are executed in the way they would like. Please see below for more information about live bidding or contact us for more information at 613-567-3336.

Sparks Auctions reserves the right to refuse telephone bidding at any time. Sparks Auctions will not be held responsible in the event that a telephone bidder cannot be contacted or does not have reliable service.

3. Auction Agents

Having an agent act for you is a good way to make sure your bidding intentions are well-represented if you cannot participate in person or through live bidding via Stamp Auction Network. Auction agents can view material, when public viewing is an option. The following agents are knowledgeable, experienced auction buyers known to Sparks Auctions and familiar with our sales. Please contact one of them, or your own existing agent directly to make arrangements suitable to both parties. Sparks Auctions is not responsible for a bidder's relationship with any agent. Agents: please contact our office at least two days before the start of a sale to make arrangements for your clients to be billed and to have their winnings shipped.

Jamie Hennebury 709-351-4103 proback5@hotmail.com	Claude Michaud 902-443-5912, 902-456-0950 cell jcm.ph@ns.sympatico.ca
---	---

Nick Martin, LoveAuctions UK (44) 0120546 0968 nick@loveauctions.co.uk	Frank Mandel 212-675-0819 busybird1@me.com
---	--

4. Live Internet Bidding

For the most satisfying and realistic experience akin to being on the auction floor, we invite you to participate via live Internet bidding, which allows bidders anywhere in the world to participate in the auction. Sparks Auctions is pleased to make the auction available through Stamp Auction Network, an independent provider of philatelic auction services for auction houses and bidders. We will do everything we can for our customers to make the process simple, trustworthy and fun. To access Sparks Auctions live internet bidding, connect to Stamp Auction Network at:

www.StampAuctionNetwork.com

Register once with Stamp Auction Network and create a user name, which will then allow you to choose auction firms to bid with, including Sparks Auctions. We will review your request for registration as soon as possible during normal business hours. If your application was made more than a few days ago, please contact us.

Valuation of Lots

Catalogue values are listed for many lots in the sales. These are the best available guides to the retail price of a single stamp or set provided that the item(s) are the same quality as the standard described in the introduction to each catalogue. Exceptional quality will often sell above the catalogue value; inferior quality will sell for less; faulty stamps in a lot can result in a sale price of a small percentage of the catalogue price.

When cataloguing collections we use the value for the grade specified. For Scott this grade is very fine. For Unitrade we use the grade specified in the lot's description. Thus a "fine" collection will have all stamps added at the fine price. We do not count obvious forgeries, reprints etc. and usually do not count faulty or ugly stamps. A lightly penciled X under a stamp in a lot means it was not counted in the catalogue value. We put a light pencil note beside more expensive stamps and often put a total catalogue value at the bottom of each page to assist viewers.

The following catalogues have been used. If there is a variance from this list, it will be mentioned in the text of the description.

2021 and 2022 Scott Catalogue Volumes 1A through 6B in US\$
2021 Scott Classic and US Specialized in US\$
2021 Unitrade Specialized Catalogue of Canadian Stamps in CAN\$

2021/2022 Stanley Gibbons 1840-1970 (SG), values in £
2007 or later Michel Catalogues of the World (Mi), values in €
2017 The Canadian Revenue Stamp Catalogue by E.S.J. Van Dam in CAN\$
Other specialized catalogues as noted in descriptions.

The U.S. Specialized and the Scott Classic are referred to as "Scott" interchangeably with the standard 6 volumes.

The term "owner's catalogue value" indicates a variety of approaches and may include older versions of catalogues. We will have inspected and reviewed the result but not re-catalogued; hence we do not vouch for the exact total of an "owner's catalogue value". Likewise, we will note "owner-identified" when there are varieties or other notations included in the consignment, even if we have not verified them.

"Estimates" ("Est.") are used when there are multiple factors to consider and to identify what we believe the lot might sell for when there is reasonable competition for it.

"Face Value" is used for entire lots when it best describes the value of the contents. From time to time, "face value" is used to identify the face value of a portion of a lot that also considers additional factors.



CANADIAN PHILATELY FROM ANOTHER POINT OF VIEW

JOIN THE CANADIAN PHILATELIC SOCIETY OF GREAT BRITAIN

Founded over 70 years ago to promote and study all aspects of philately in British North America (Canada and its Provinces), the Society offers its members:-

- A quarterly award-winning full colour magazine
- Auctions each year with many hundreds of lots
- An extensive library of published books and articles
- Website based exchange packet
- Subscriptions payable in local currency

For more information or membership details visit our website at www.canadianpsgb.org.uk or contact our Secretary, John Watson at Lyngarth, 106 Huddersfield Road, Penistone, South Yorkshire S36 7BX or by email at john.watson1949@btinternet.com

Our 2022 75th Anniversary Convention will be held in Dundee, Scotland from 28 September to 2 October.

www.canadianpsgb.org.uk



Canada's Philatelic Centre

VINCENT GRAVES GREENE PHILATELIC RESEARCH FOUNDATION

www.greenefoundation.ca

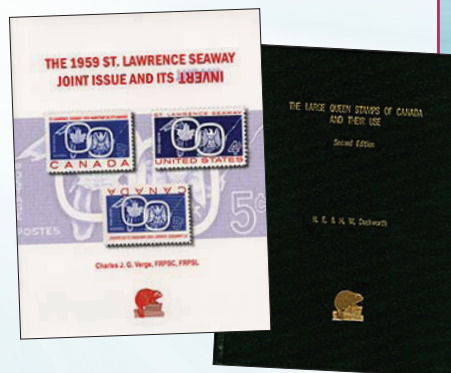


EXPERTIZATION

- ▶ Canada's Premier Expertizing Service for BNA stamps and Postal History
- ▶ Greene Foundation certificates are the accepted standard for BNA material
- ▶ Expertization certifies authenticity for collectors and dealers
- ▶ Latest technology used
- ▶ See Website for forms, fees and instructions

LIBRARY

- ▶ Canada's largest Philatelic Library open to collectors
- ▶ Extensive BNA research material
- ▶ Hours: 10am-4pm Monday to Thursday; One Saturday per month; Fourth Wednesday each month: 10am-7pm
- ▶ Librarian on site for assistance
- ▶ See Website for latest news



PUBLICATIONS

- ▶ The Foundation publishes scholarly books on BNA stamp issues and Postal History
- ▶ Recent books have full colour illustrations
- ▶ See Website for a full listing and prices
- ▶ Order books directly from the Greene Foundation or online through eBay

10 Summerhill Ave, Toronto, Ontario, Canada M4T 1A8 – Phone: 416-921-2073 – Email: info@greenefoundation.ca



BID SHEET

Public Auction #39 — January 27th, 2022

SPARKS AUCTIONS

1770 Woodward Drive, Suite 101, Ottawa, ON K2C 0P8

Telephone: (613) 567-3336 844-252-2032 toll-free FAX: (613) 567-2972

Email: info@sparks-auctions.com www.sparks-auctions.com

Your name and full mailing address:(please print):

Daytime telephone_____

Fax:_____

Email:_____

I authorize Sparks Auctions to purchase on my behalf the following lots at or under the limited stated. I agree to the terms of sale as printed in the catalogue.

Signature

References:

Stamp Firm

Telephone

Stamp Firm

Telephone

A buyer's Premium of 17% will be added to the hammer price and becomes part of the total purchase price.

Lot Number	My Top Bid	Lot Number	My Top Bid	Lot Number	My Top Bid	Lot Number	My Top Bid

PLEASE LIST ADDITIONAL BIDS ON REVERSE OR COPY TO LIST ADDITIONAL BIDS

Check appropriate boxes:

- ☐ You may increase my bids by one increment to break a tie.
☐ You may increase my bids by _____% if competition warrants.

**Please bid using these increments.
(All bids are in Canadian dollars.)**

\$10 - \$200	\$10	\$7500 - \$15,000	\$500
\$200 - \$800	\$25	\$15,000 - \$30,000	\$1,000
\$800 - \$1500	\$50	\$30,000 - \$100,000	\$2,000
\$1500 - \$3000	\$100	\$100,000 - \$500,000	\$5,000
\$3000 - \$7000	\$200	above \$500,000	\$10,000

See reverse for options such as limit bids, credit card payments* etc.

LIMIT BIDS If you wish to limit the total amount of your successful bids (not including the 17% buyer's premium) enter the amount here. \$_____ Your bids will be executed until this figure is reached.

I would like to pay by VISA or MASTERCARD. ***Please note: We charge a 2.5% convenience fee to process Visa & MasterCard payments**

CC # _____ Expiry ____/____

Validation number on back_____ (this must be provided)

Name as shown on card: _____

Authorizing Signature_____

☐ Please check here if you have provided us with your email address and you would like us to enter your bids in the Stamp Auction Network system. You will receive email messages advising you of the status of your bids.

Lot Number	My Top Bid	Lot Number	My Top Bid	Lot Number	My Top Bid	Lot Number	My Top Bid



131



167



171



208



212



239



248



x444



250



x243



464



15



25



33



55



76



135



136



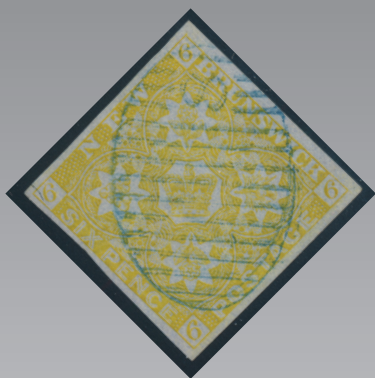
169



268



277



287



290



317



323



435



466



479